

**www.e-rara.ch**

**Raccolta delle migliori chiese di Roma e suburbane seguita da una raccolta di mosaici della primitiva epoca esposte con tavole disegnate, incise e corredate di cenni storici e descrittivi**

**Fontana, Giacomo**

**Torino, [1889]**

**ETH-Bibliothek Zürich**

Shelf Mark: Rar 9603

Persistent Link: <https://doi.org/10.3931/e-rara-49878>

[L'église de Ste-Praxède.]

---

**www.e-rara.ch**

Die Plattform e-rara.ch macht die in Schweizer Bibliotheken vorhandenen Drucke online verfügbar. Das Spektrum reicht von Büchern über Karten bis zu illustrierten Materialien – von den Anfängen des Buchdrucks bis ins 20. Jahrhundert.

e-rara.ch provides online access to rare books available in Swiss libraries. The holdings extend from books and maps to illustrated material – from the beginnings of printing to the 20th century.

e-rara.ch met en ligne des reproductions numériques d'imprimés conservés dans les bibliothèques de Suisse. L'éventail va des livres aux documents iconographiques en passant par les cartes – des débuts de l'imprimerie jusqu'au 20e siècle.

e-rara.ch mette a disposizione in rete le edizioni antiche conservate nelle biblioteche svizzere. La collezione comprende libri, carte geografiche e materiale illustrato che risalgono agli inizi della tipografia fino ad arrivare al XX secolo.

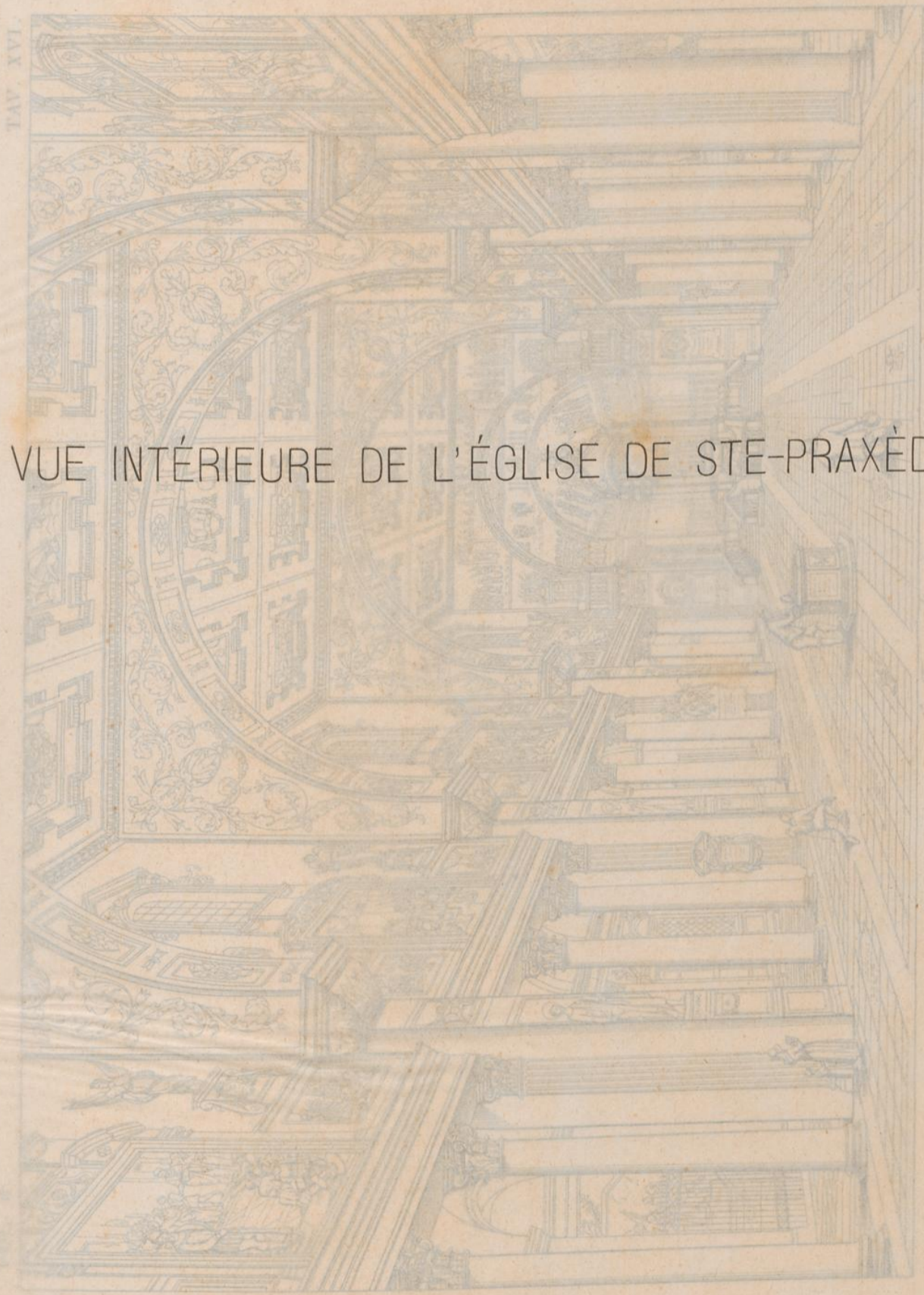
---

**Nutzungsbedingungen** Dieses Digitalisat kann kostenfrei heruntergeladen werden. Die Lizenzierungsart und die Nutzungsbedingungen sind individuell zu jedem Dokument in den Titelinformationen angegeben. Für weitere Informationen siehe auch [Link]

**Terms of Use** This digital copy can be downloaded free of charge. The type of licensing and the terms of use are indicated in the title information for each document individually. For further information please refer to the terms of use on [Link]

**Conditions d'utilisation** Ce document numérique peut être téléchargé gratuitement. Son statut juridique et ses conditions d'utilisation sont précisés dans sa notice détaillée. Pour de plus amples informations, voir [Link]

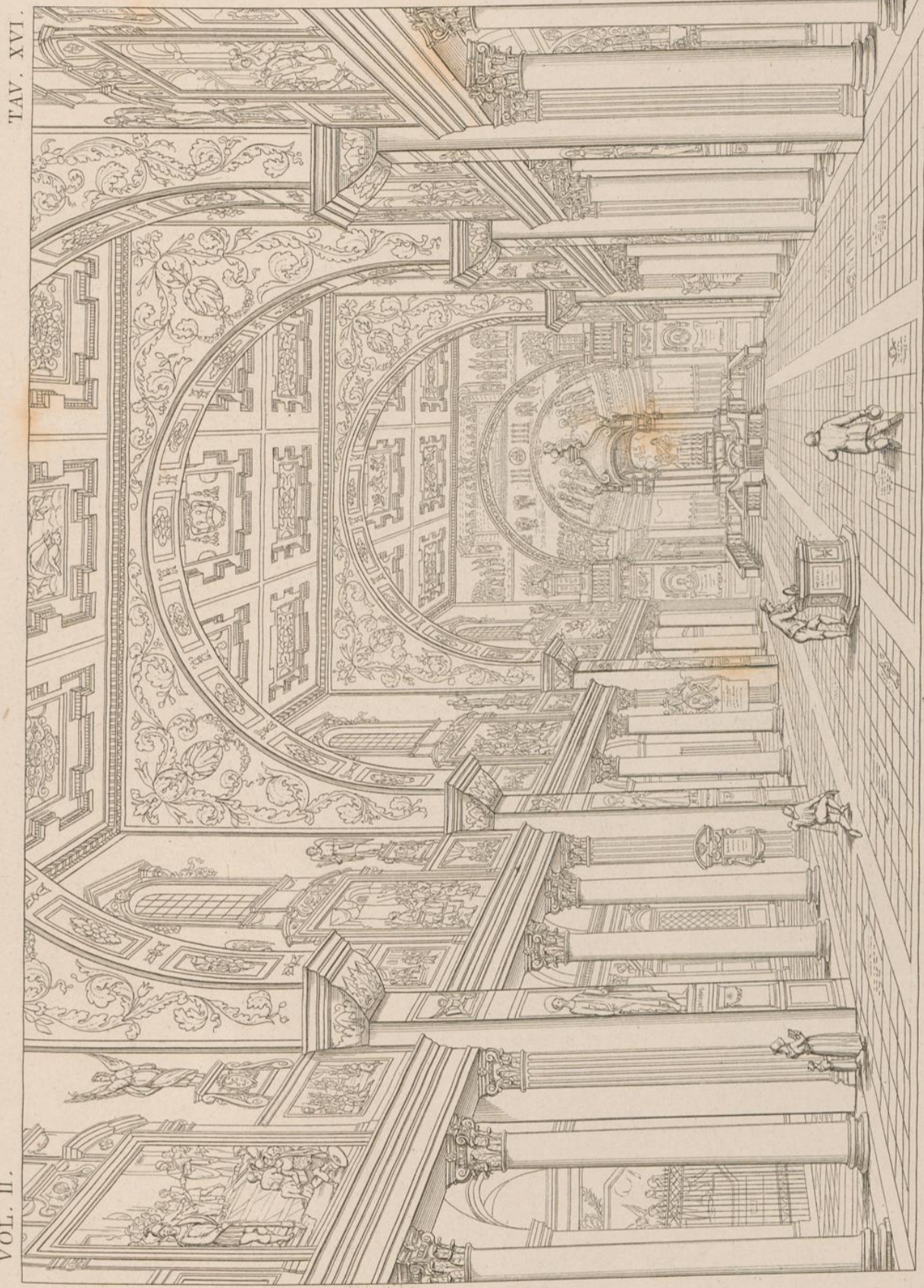
**Condizioni di utilizzo** Questo documento può essere scaricato gratuitamente. Il tipo di licenza e le condizioni di utilizzo sono indicate nella notizia bibliografica del singolo documento. Per ulteriori informazioni vedi anche [Link]



VUE INTÉRIEURE DE L'ÉGLISE DE STE-PRAXÈDE

*Chœur de Sainte Praxède*

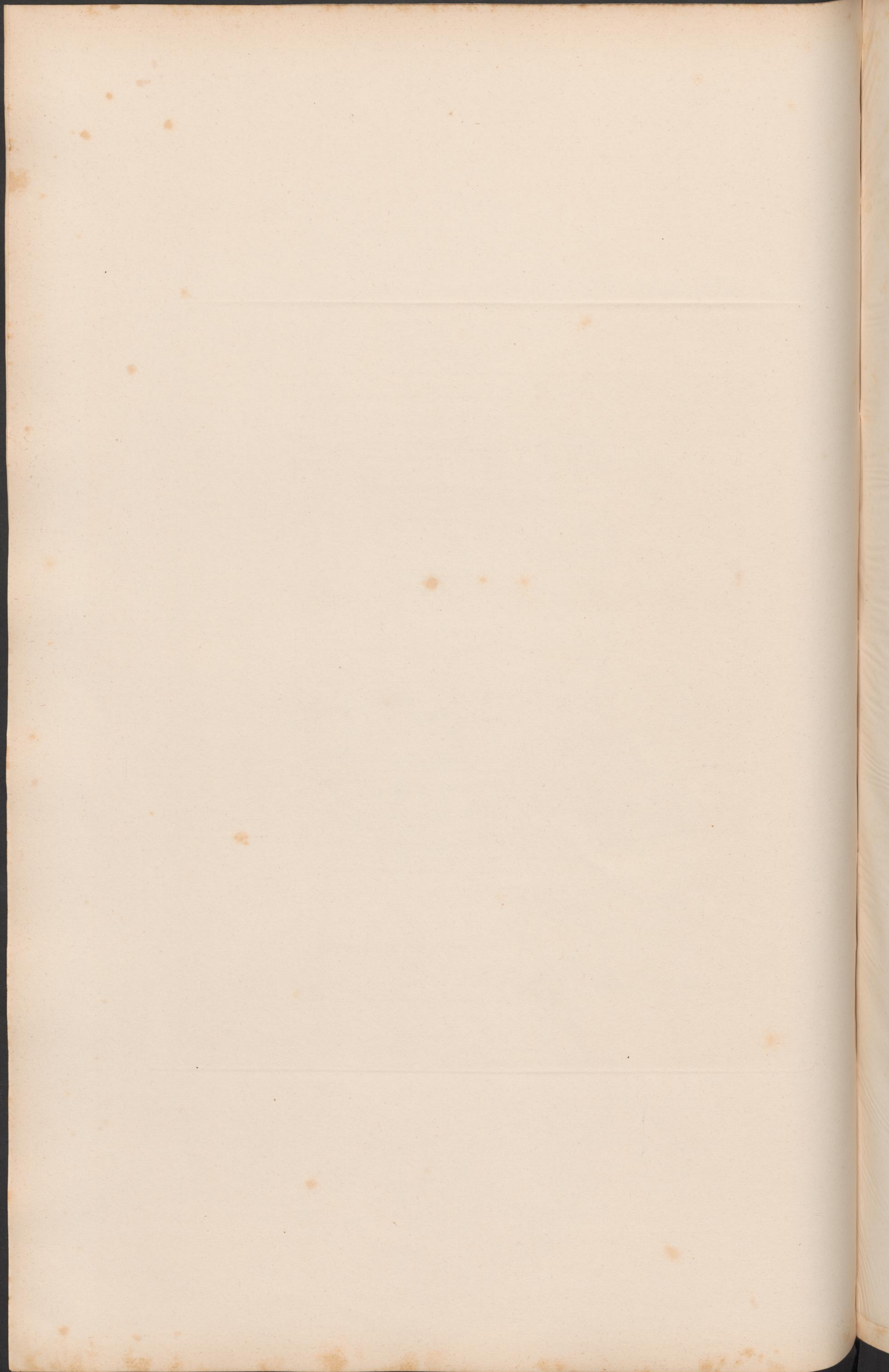
VOL. II.

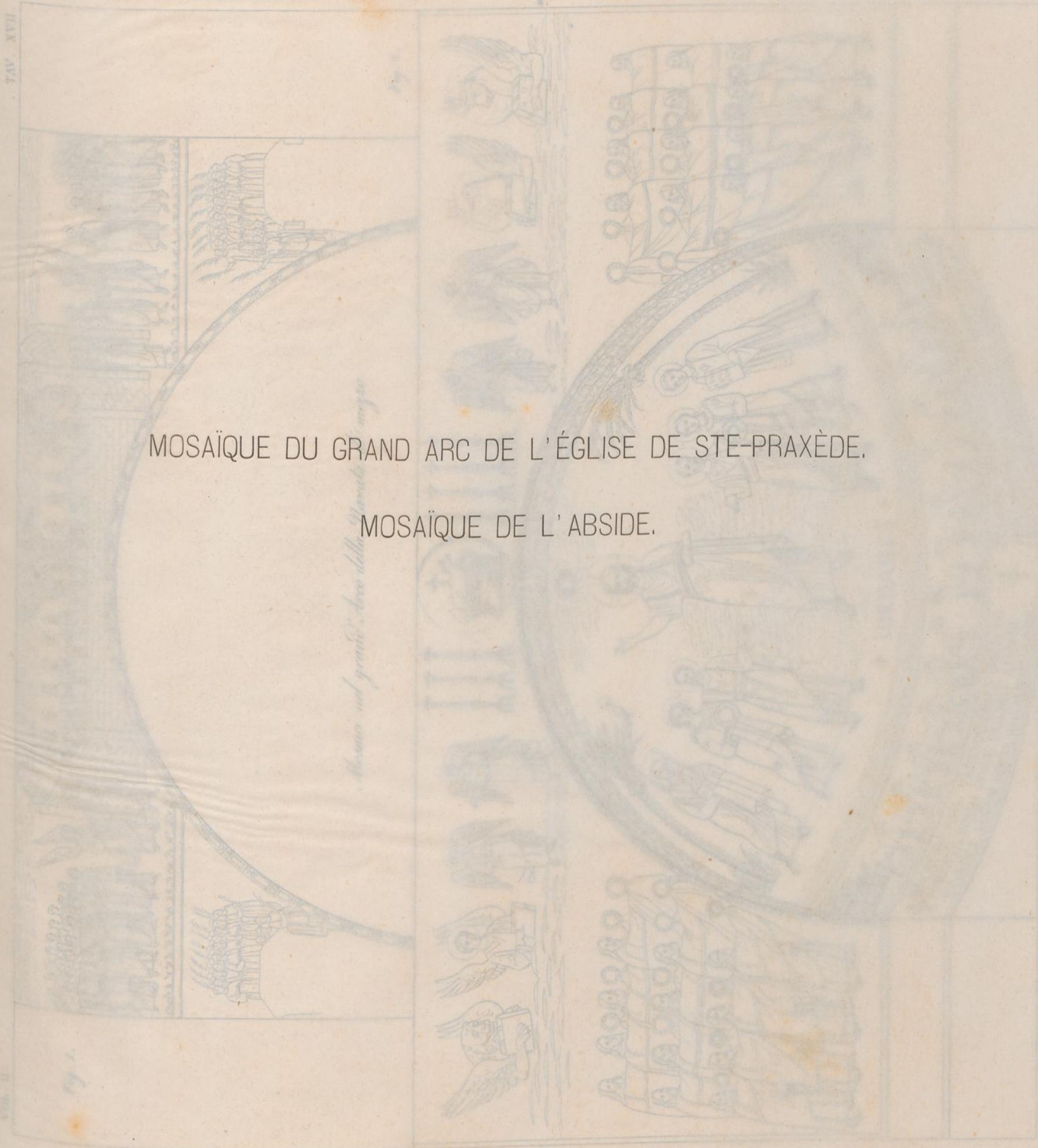


TAV. XVI.

Gio. Battista Piranesi del. e inc.

Chiesa di Santa Prospice





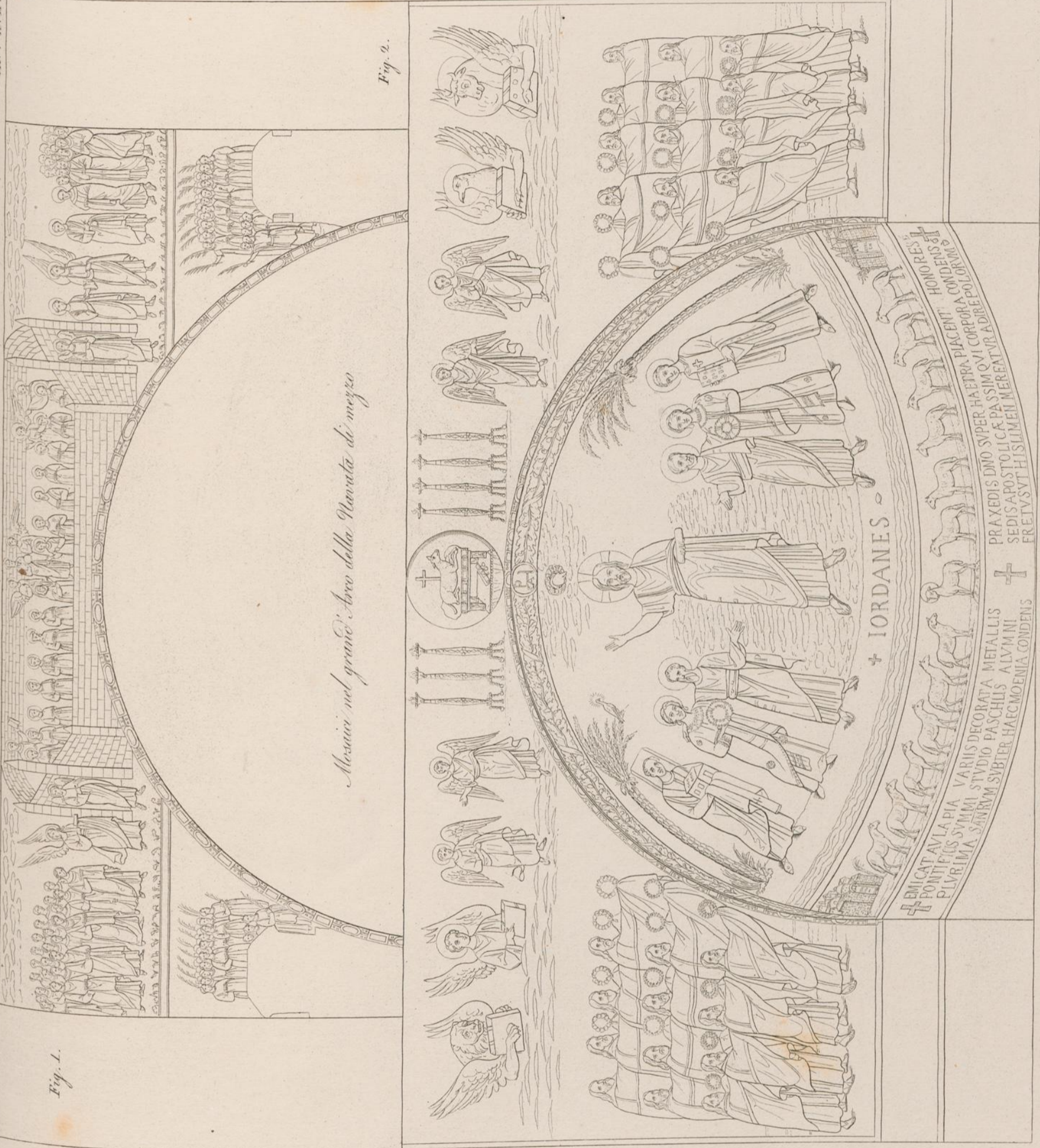
MOSAÏQUE DU GRAND ARC DE L'ÉGLISE DE STE-PRAXÈDE.

MOSAÏQUE DE L'ABSIDE.

Fig. 1.

Fig. 2.

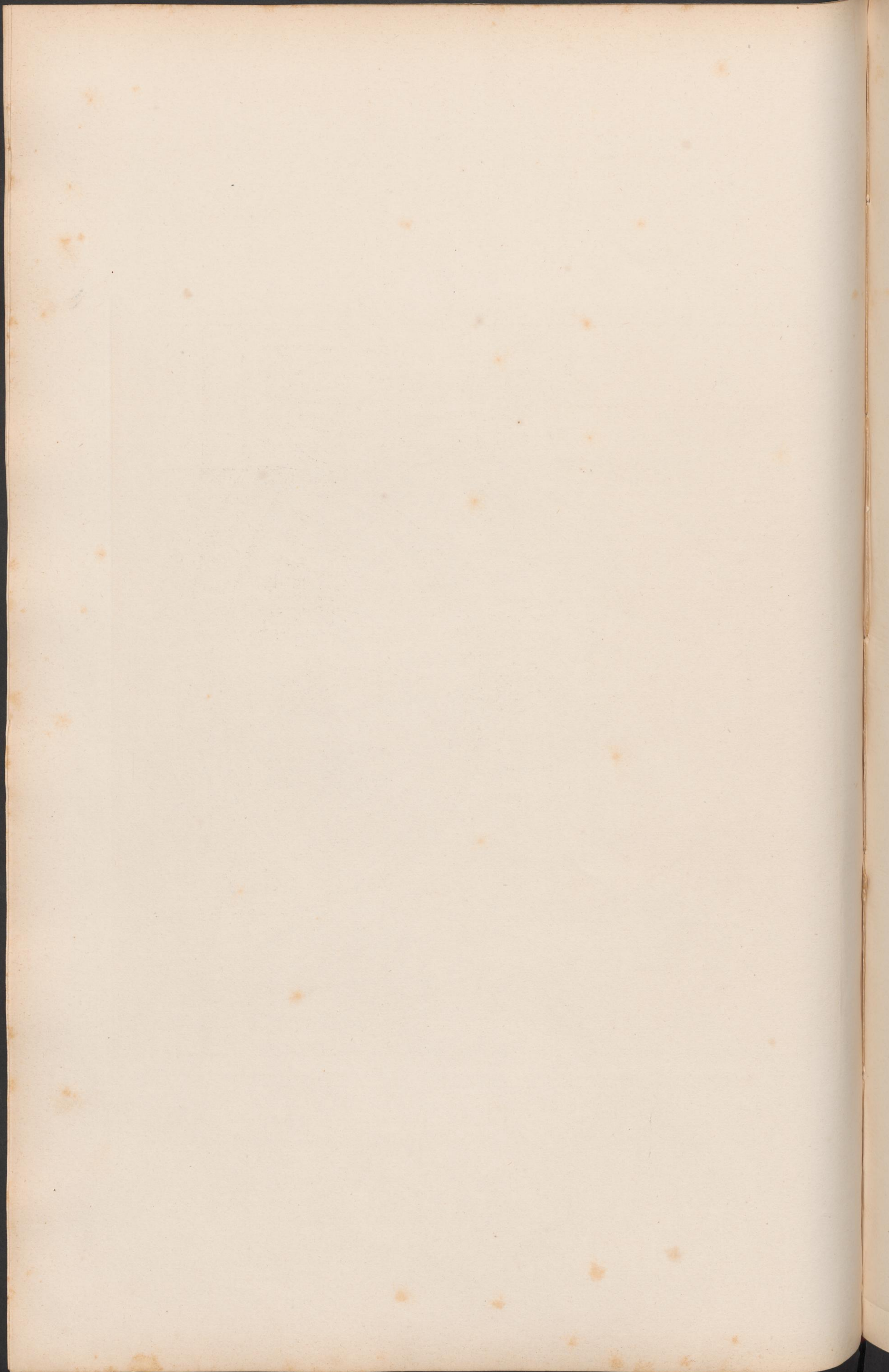
Mosaici nel grande Arco della Navata di mezzo



+ BNICAT AVLA PIA VARIIS DECORATA METALLIS  
 + PONTIFICIS SYMMI STVDIO PASCHILIS ALVANI  
 PLVRIMA SARRVM SVBTER HAEC MOENIA CONDENS  
 + IORDANES +  
 PRAEDES DMO SVPER HAETRA PIACENTI HONORE ET  
 SEDIS APOSTOLICA PASSIMO VI CORPORA CONDENS  
 ERETVSYTHI SIMIEN MERENTVR ADRE POLONAM

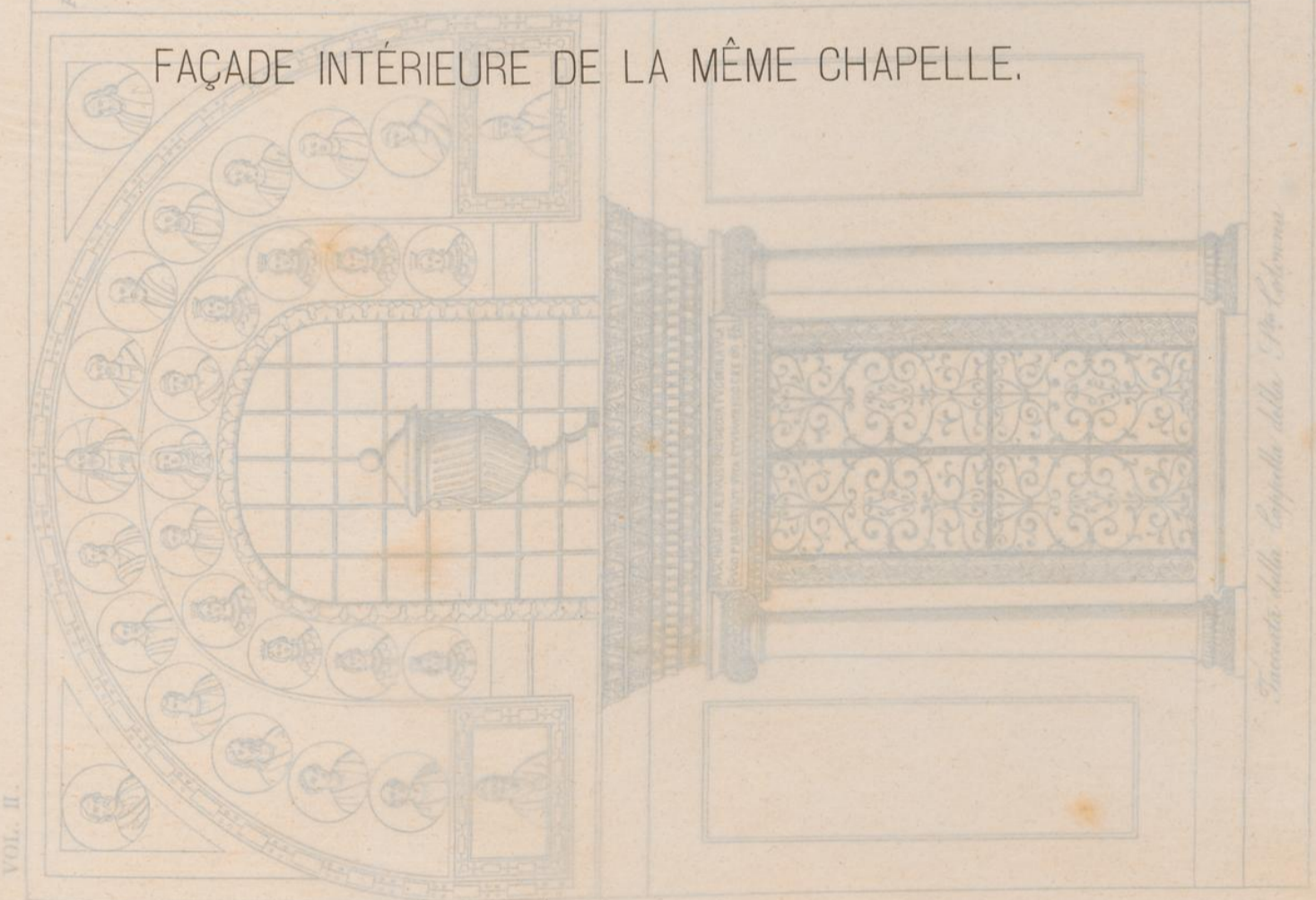
Mosaico dell' Arco

G. P. P. P.

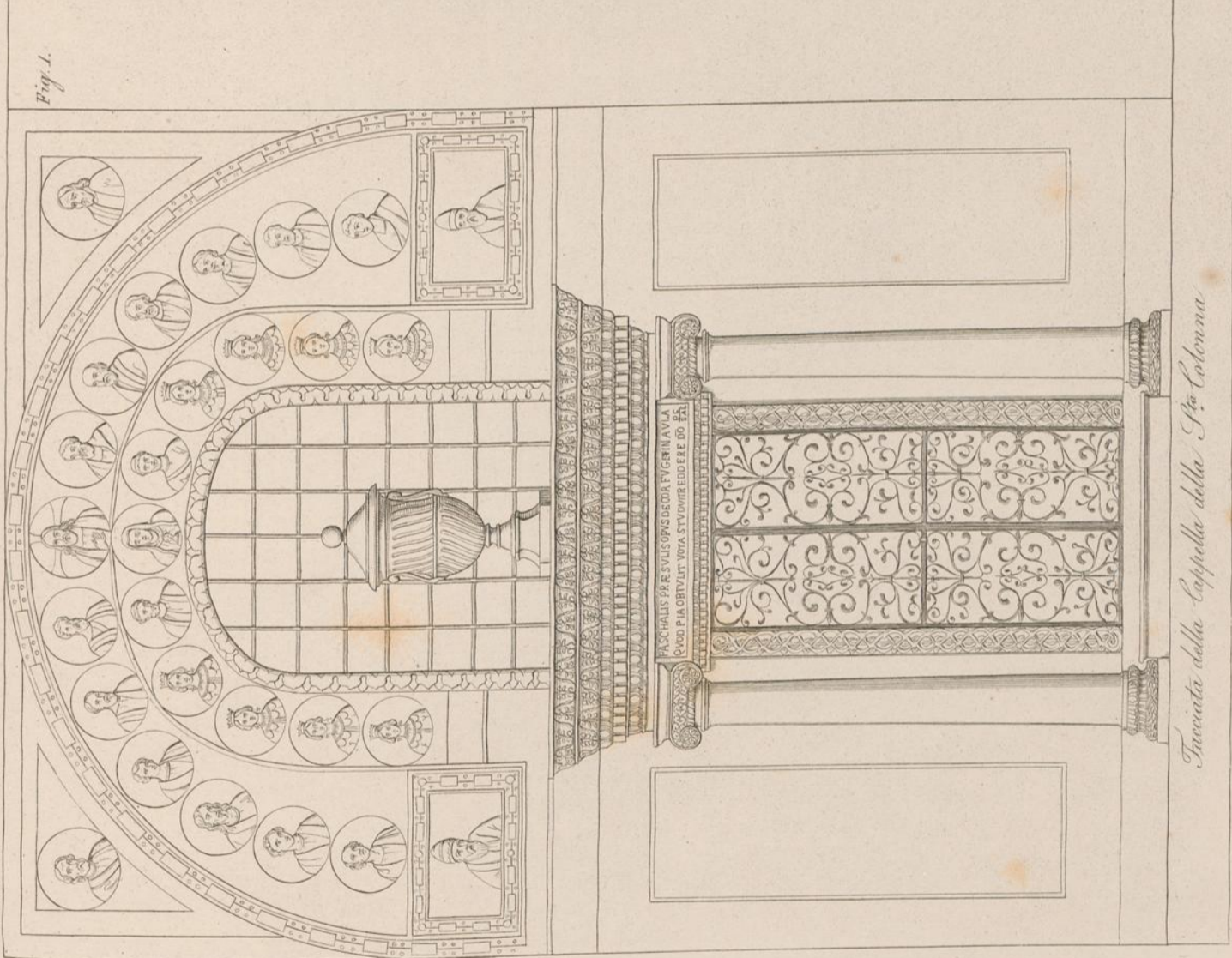




FAÇADE EXTÉRIEURE DE LA CHAPELLE DE LA STE-COLONNE,  
DANS L'ÉGLISE DE STE-PRAXÈDE.

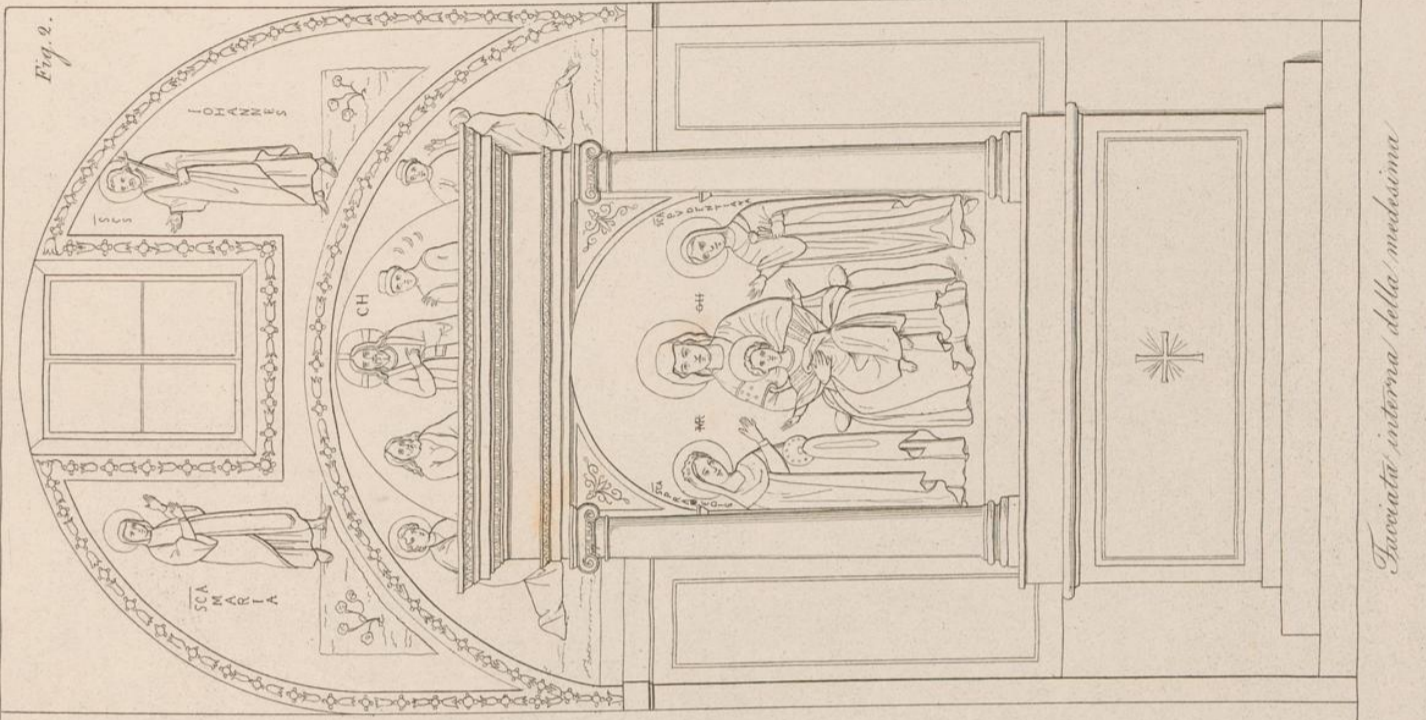


FAÇADE INTÉRIEURE DE LA MÊME CHAPELLE.

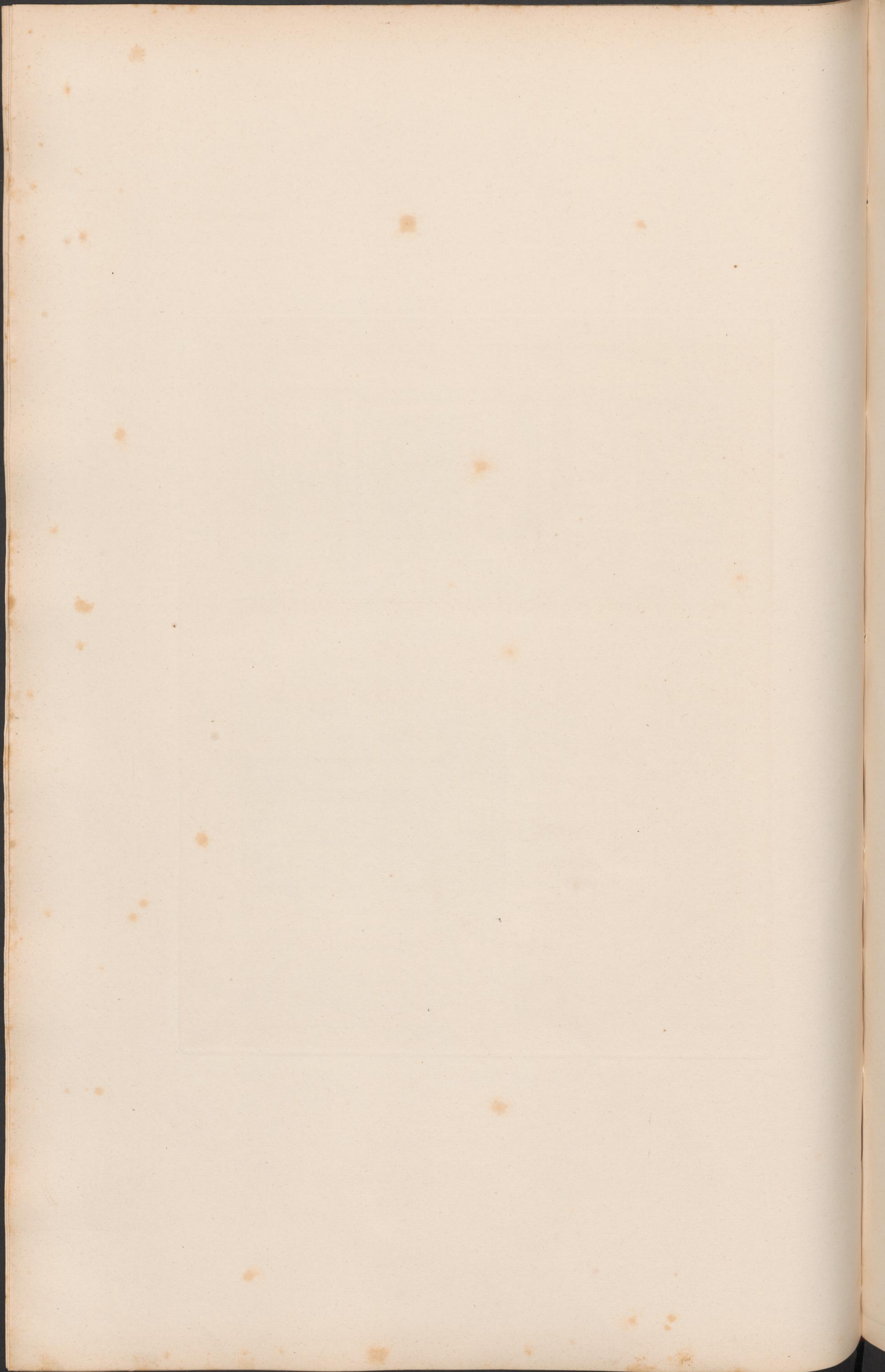


*Tracciata della Cappella della S.<sup>a</sup> Colomba*

Gius. Fontana del. e inc.



*Tracciata interna della madrisima*



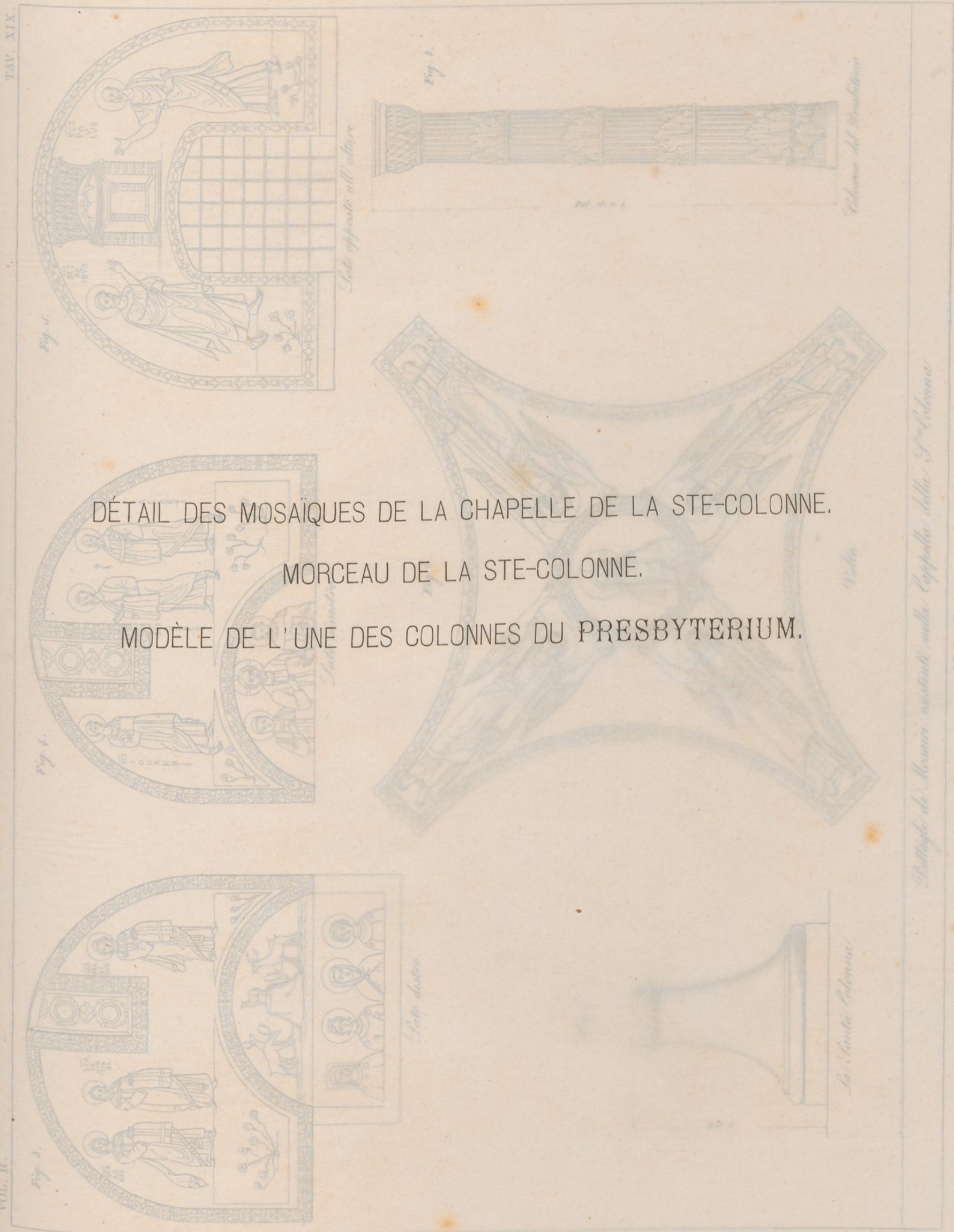


Fig. 3.

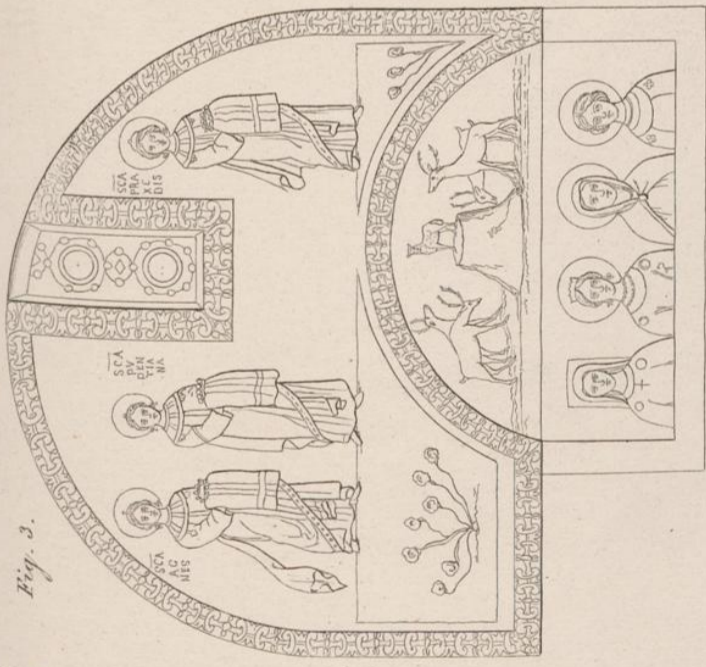


Fig. 4.

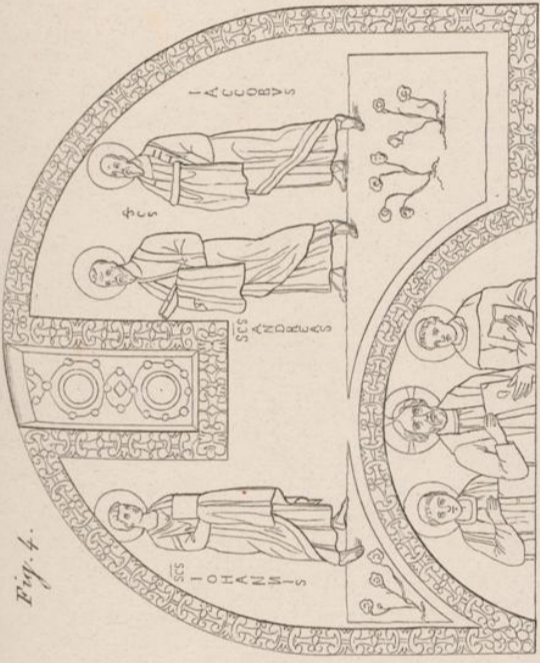
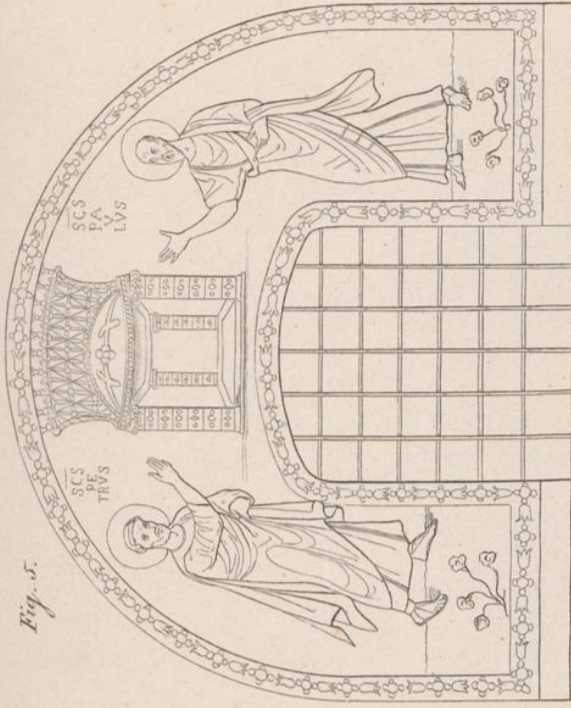


Fig. 5.



Lato destro

Fig. 6.

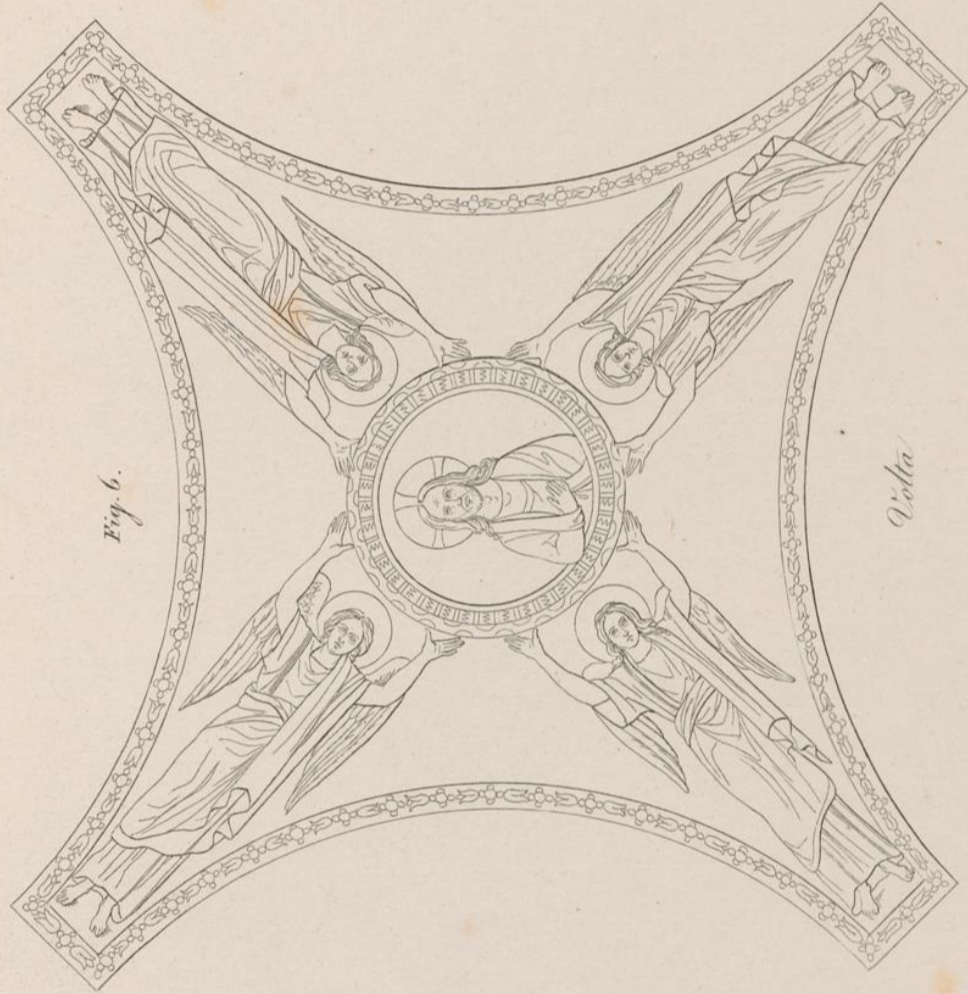


Fig. 8.

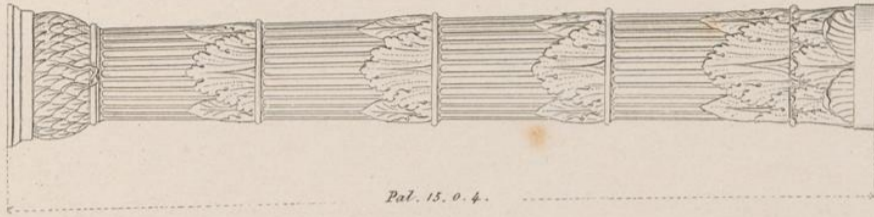
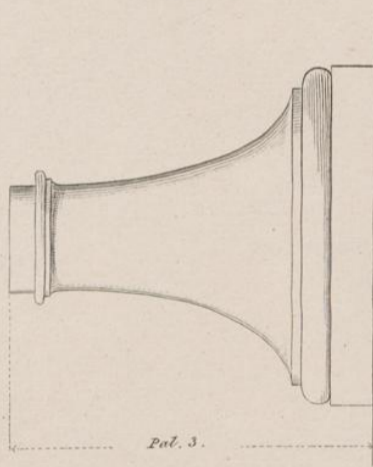
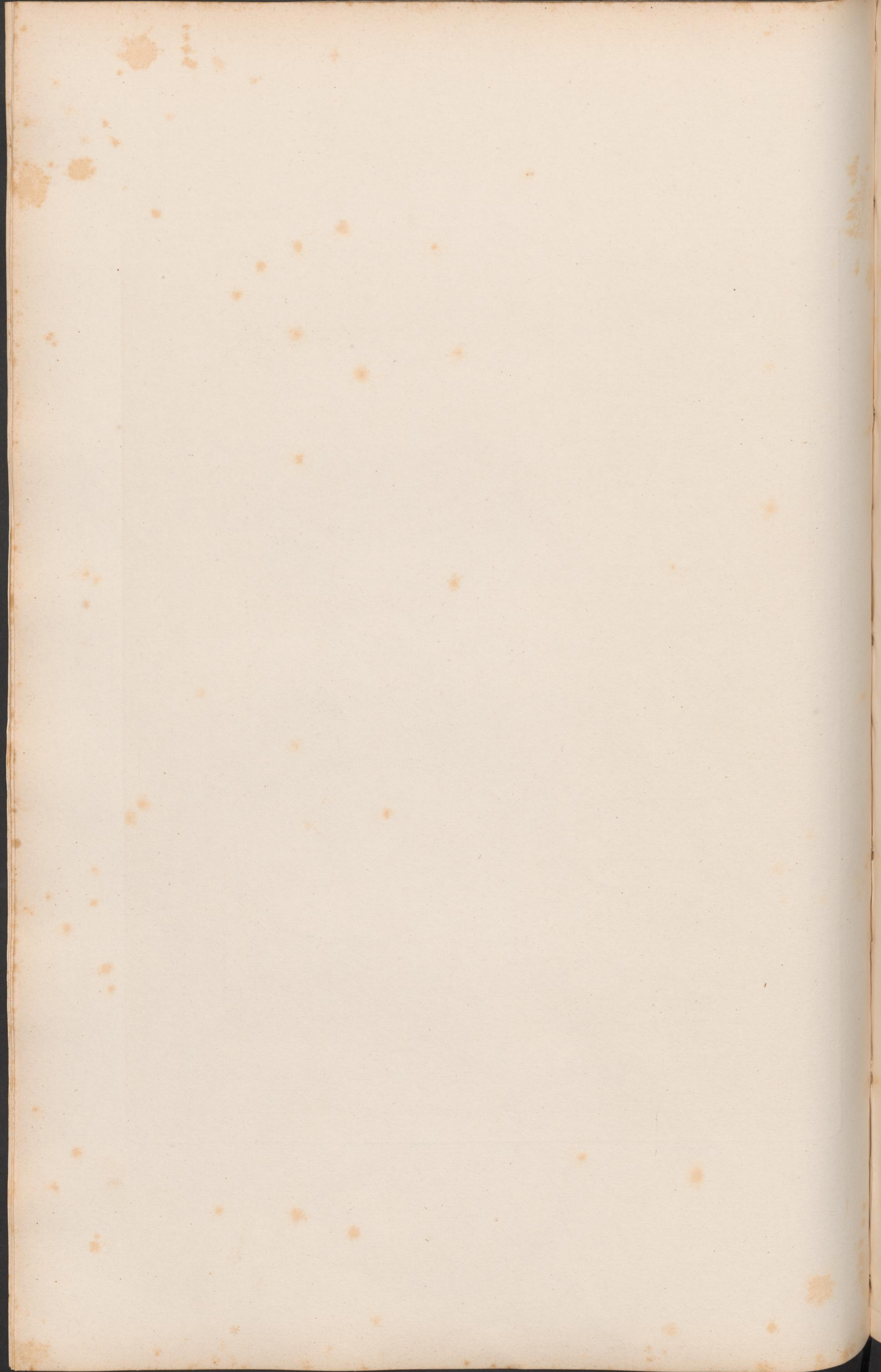


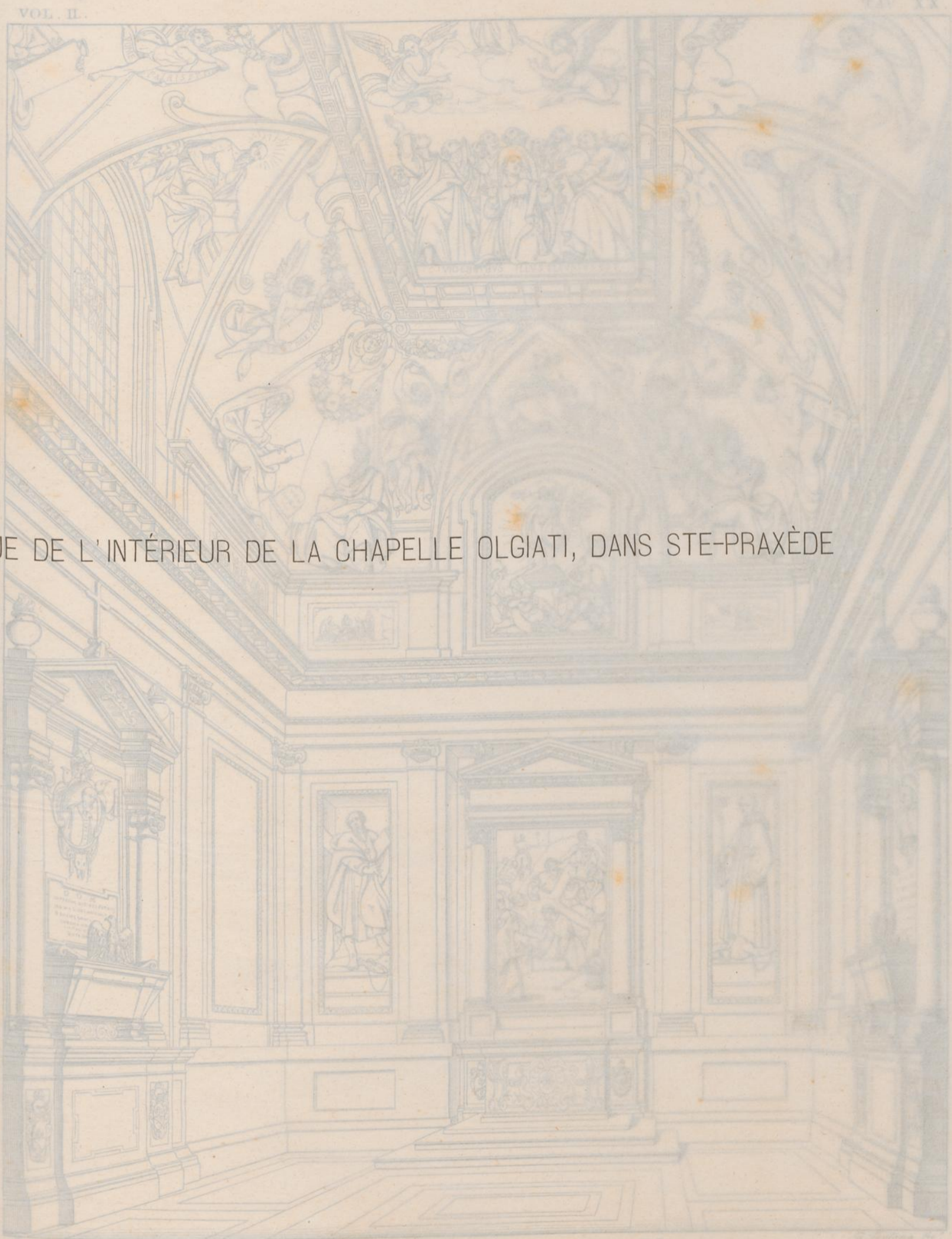
Fig. 7.



Disegni di Mosaii esistenti nella Cappella della S.<sup>a</sup> Colonna

G. Ferraro del. inc.





VUE DE L'INTÉRIEUR DE LA CHAPELLE OLGIATI, DANS STE-PRAXÈDE

*disegnato da G. B. Piranesi*

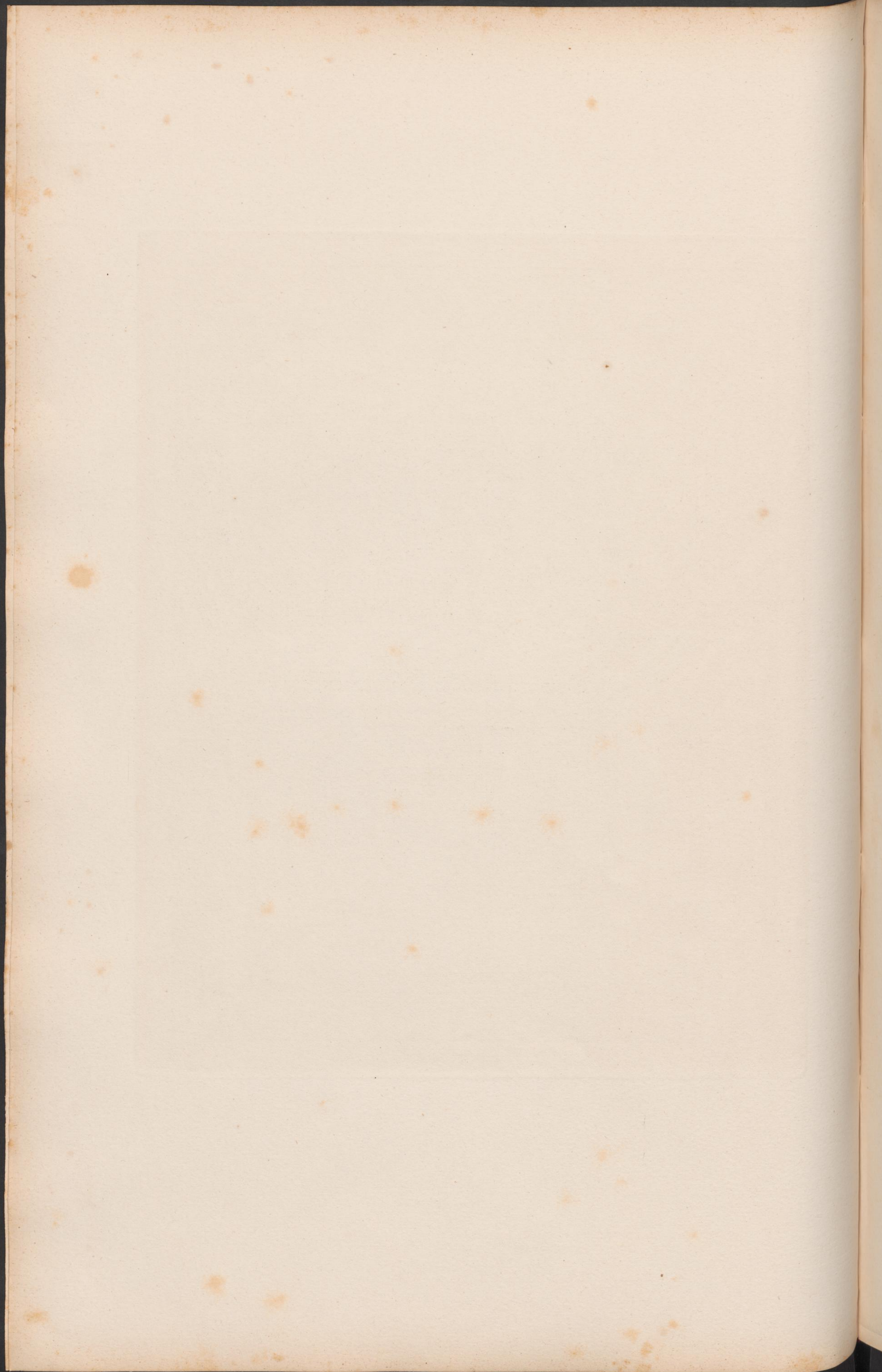
*Veduta prospettiva della Cappella Olgiati in S. Prassede*

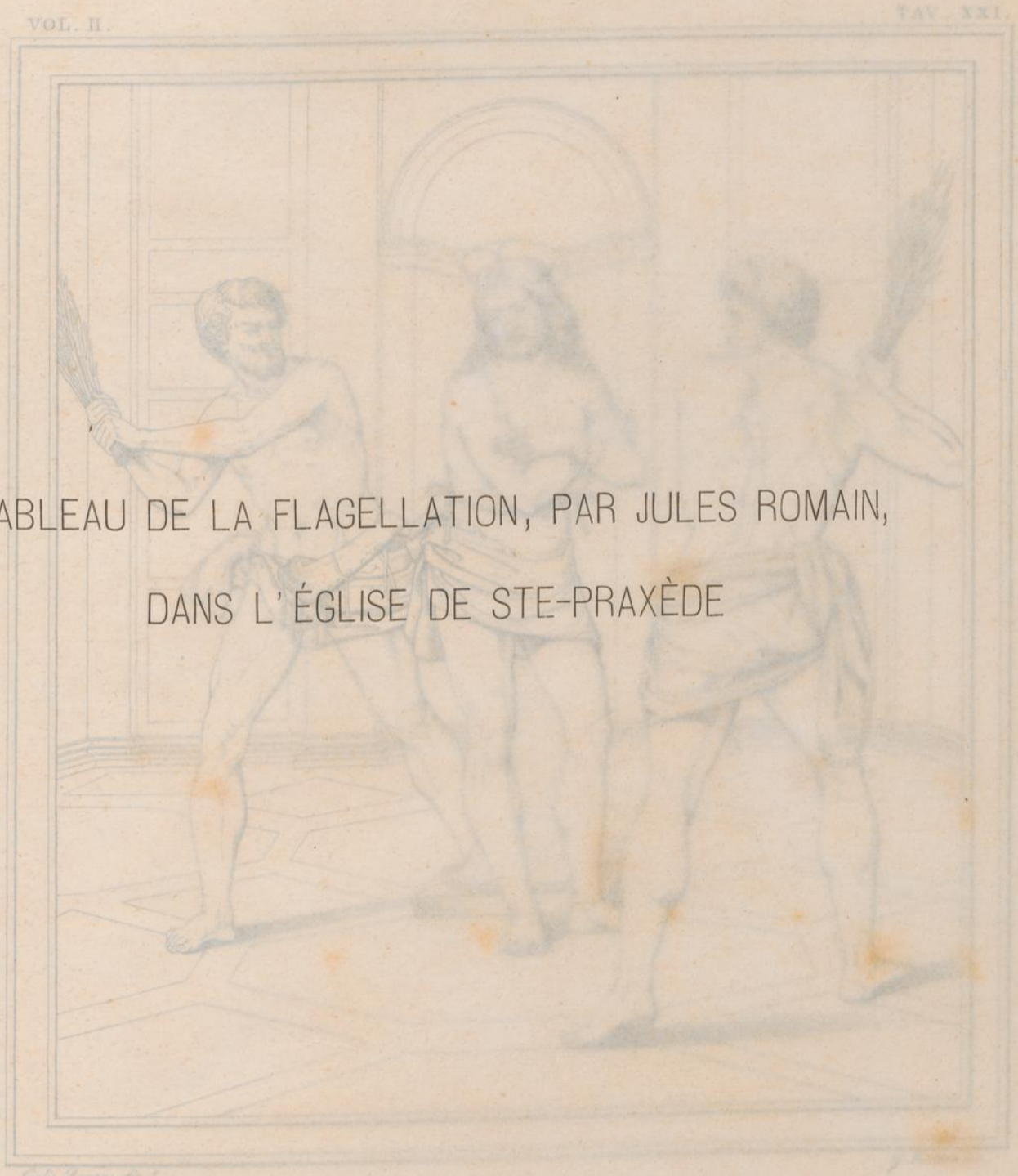


Cav. d. Anselmi inv. e. del.

Veduta prospettiva della Cappella Olgiati in S. Prassede

G. Fontana fec.





TAB. II. TAV. XXI.  
TABLEAU DE LA FLAGELLATION, PAR JULES ROMAIN,  
DANS L'ÉGLISE DE STE-PRAXÈDE

*Jules Romain del.*

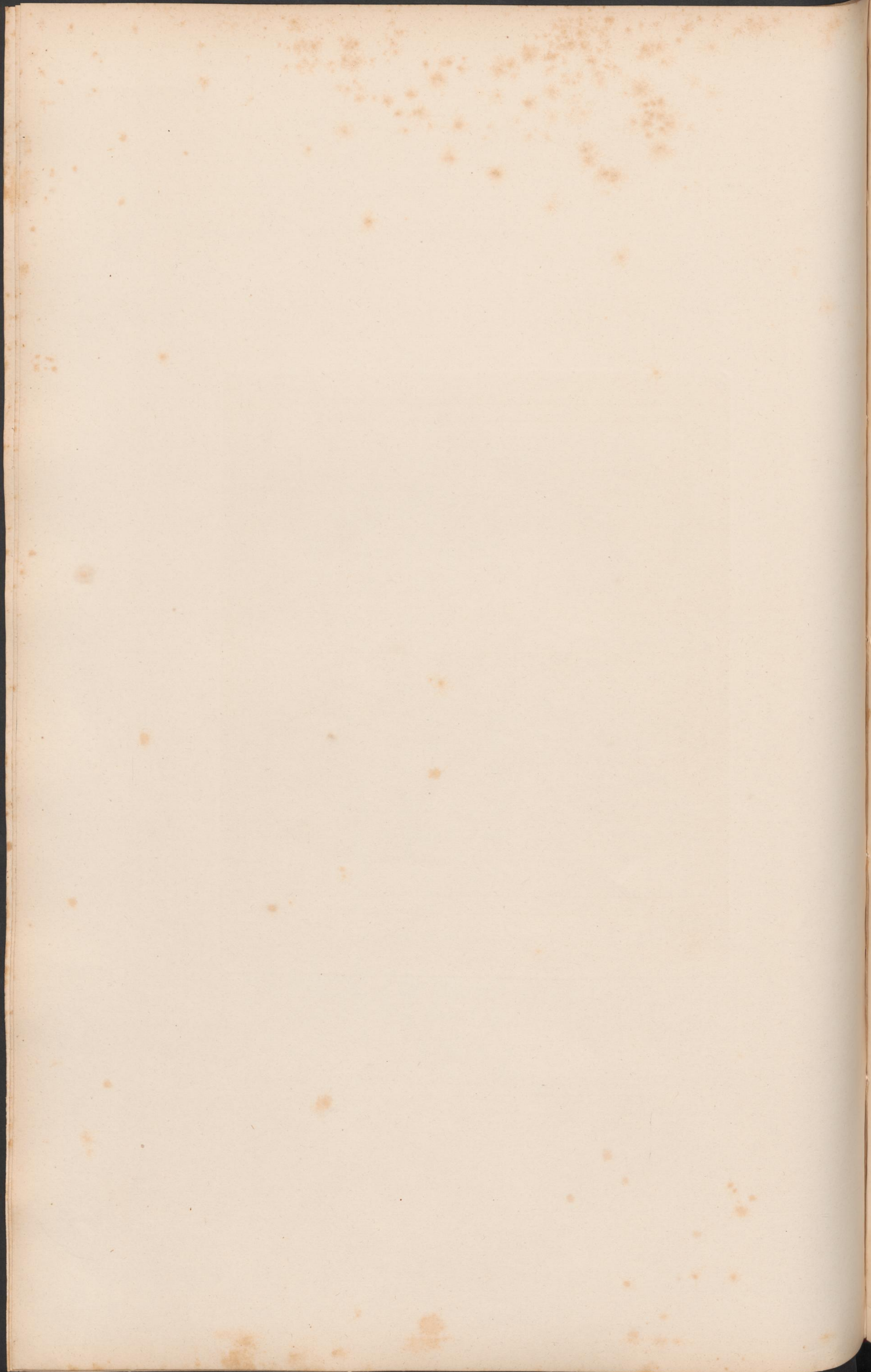
*Rayet sculp.*



*Giulio Romano dip.*

*G. Fontana scul.*

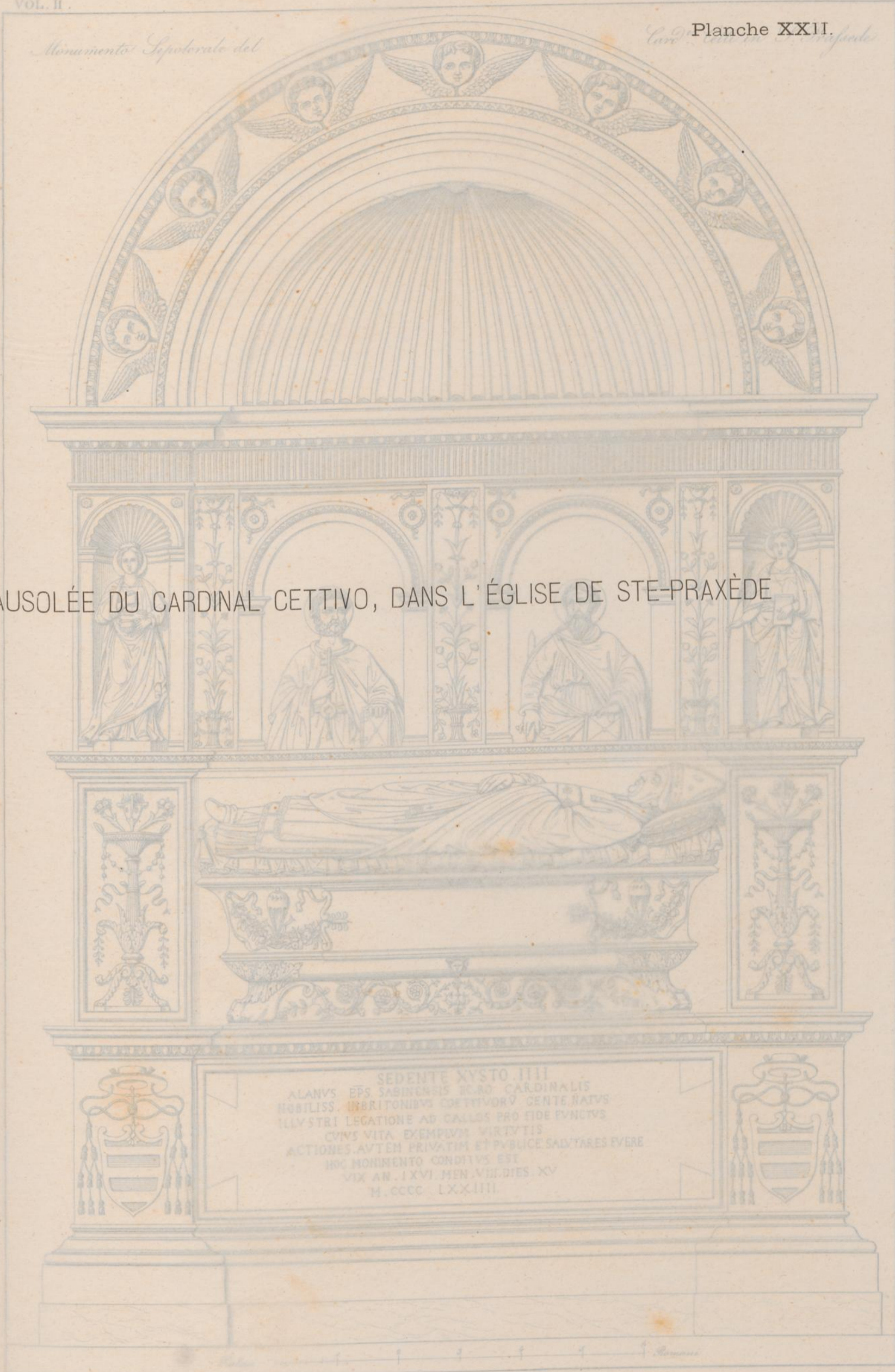
*Flagellazione di N. S. Gesù Cristo*



*Monumento Sepulchrale del*

*Card. Cettivo in S. Praxede*

MAUSOLÉE DU CARDINAL CETTIVO, DANS L'ÉGLISE DE STE-PRAXÈDE

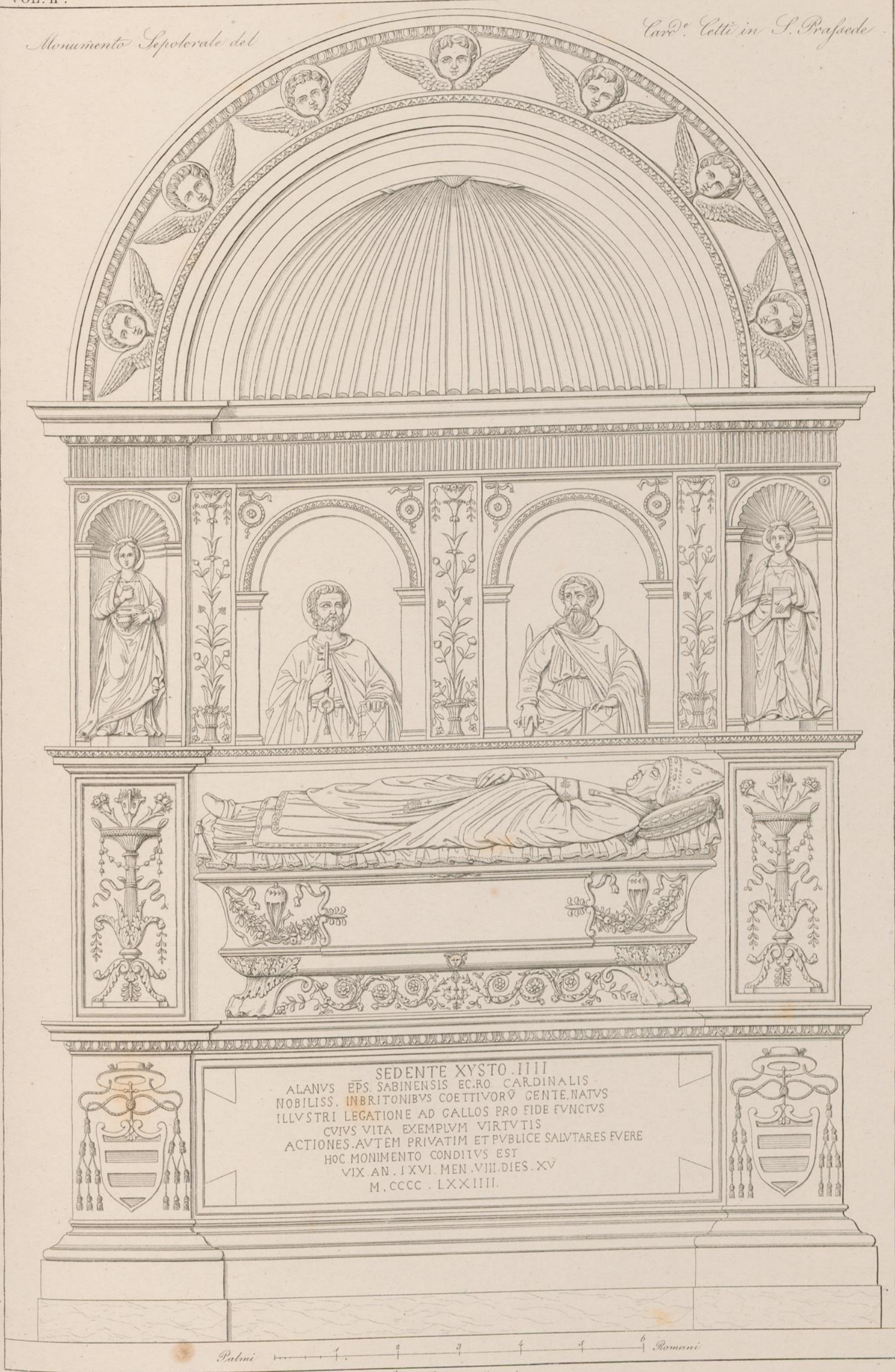


SEDENTE XYSTO IIII  
 ALANVS EPS SABINENSIS SACRO CARDINALIS  
 HOBILISS. BRITONIBVS CETTIVORV CENTE NATVS  
 ILLVSTRI LEGATIONE AD CALLOS PRO FIDE EVANGVS  
 CVIVS VITA EXEMPLVM VIRTVTIS  
 ACTIONES AVTEM PRIVATIM ET PVBLICE SALVTARES EVERE  
 HOC MONVMENTO CONDITVS EST  
 VIX AN. I XVI MEN. VIII. DIES. XV  
 M. CCCC. LXX. IIII.

*Geo. Fontana del. e. inc.*

*Monumento Sepolcrale del*

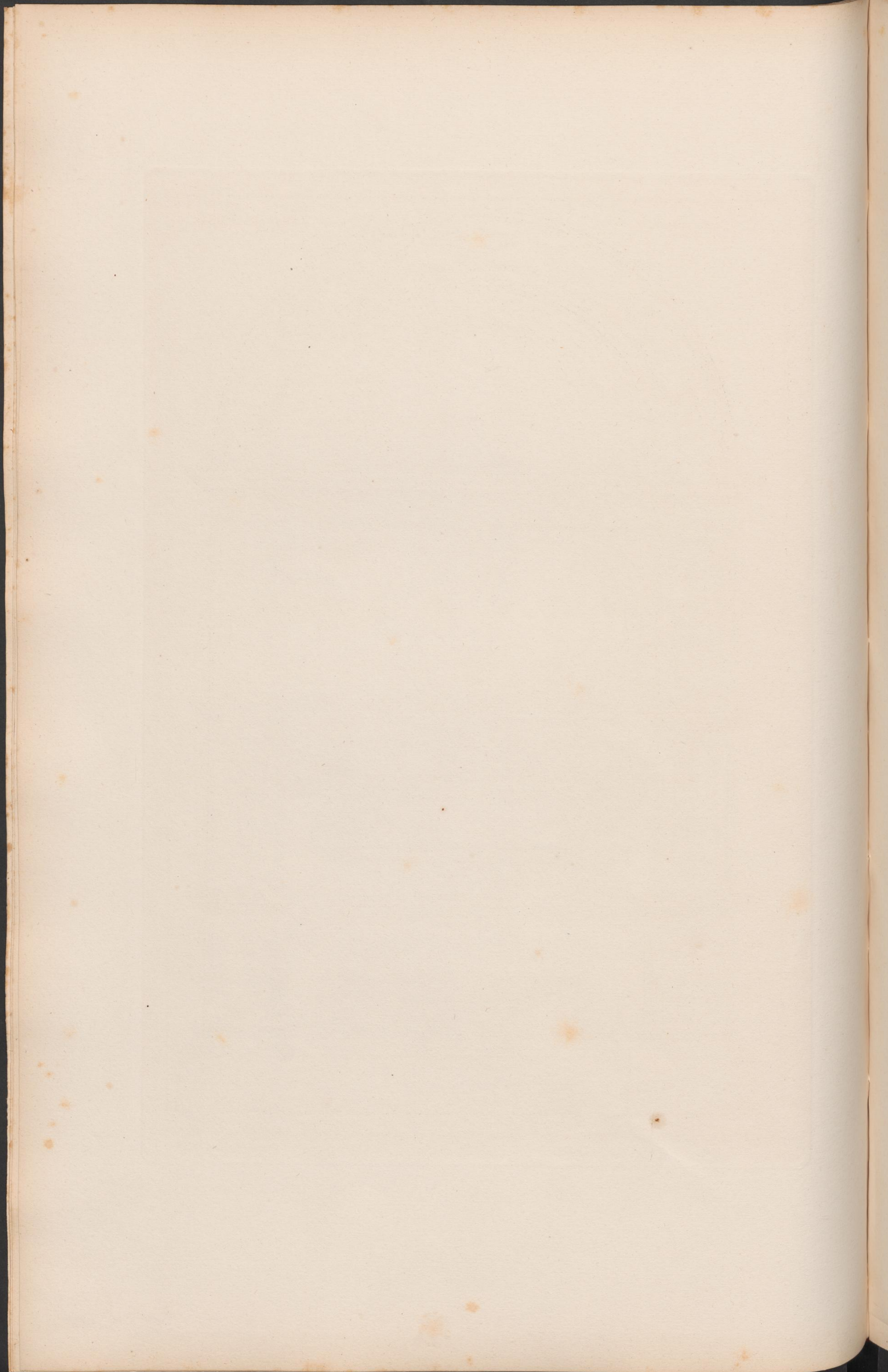
*Card. Cetti in S. Prassede*

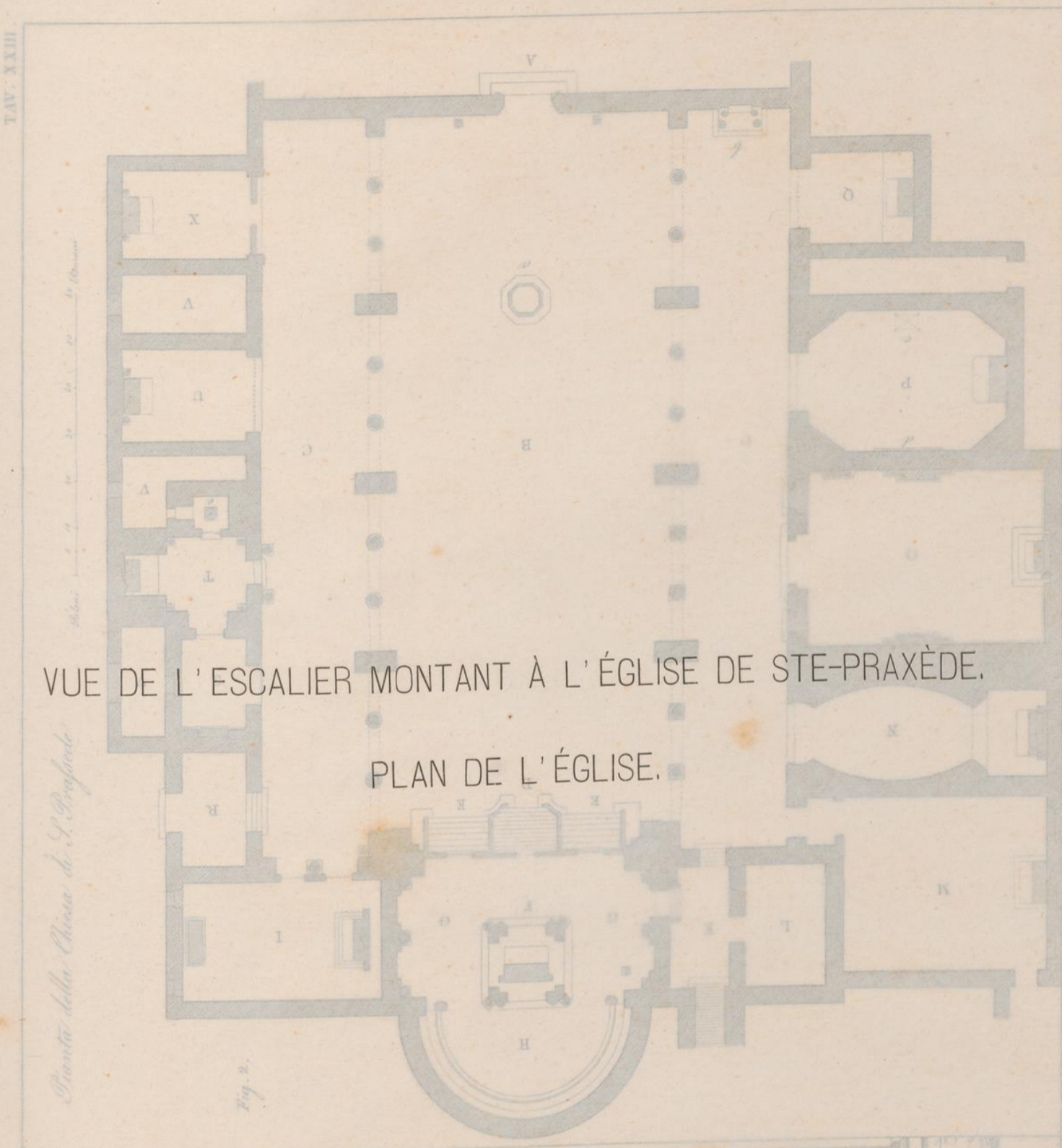


SEDENTE XYSTO .IIII  
 ALANVS EPS. SABINENSIS EC.RO. CARDINALIS  
 NOBILISS. INBRITONIBVS COETIVORV GENTE.NATVS  
 ILLVSTRI LEGATIONE AD GALLOS PRO FIDE FVNCTVS  
 CVIVS VITA EXEMPLVM VIRTVTIS  
 ACTIONES.AVTEM PRIVATIM ET PVBLICE SALVTARES EVERE  
 HOC MONIMENTO CONDITVS EST  
 VIX AN. I.XVI. MEN.VIII.DIES.XV  
 M. CCCC. LXX.IIIII.

Palmi 1 2 3 4 5 6 Romani

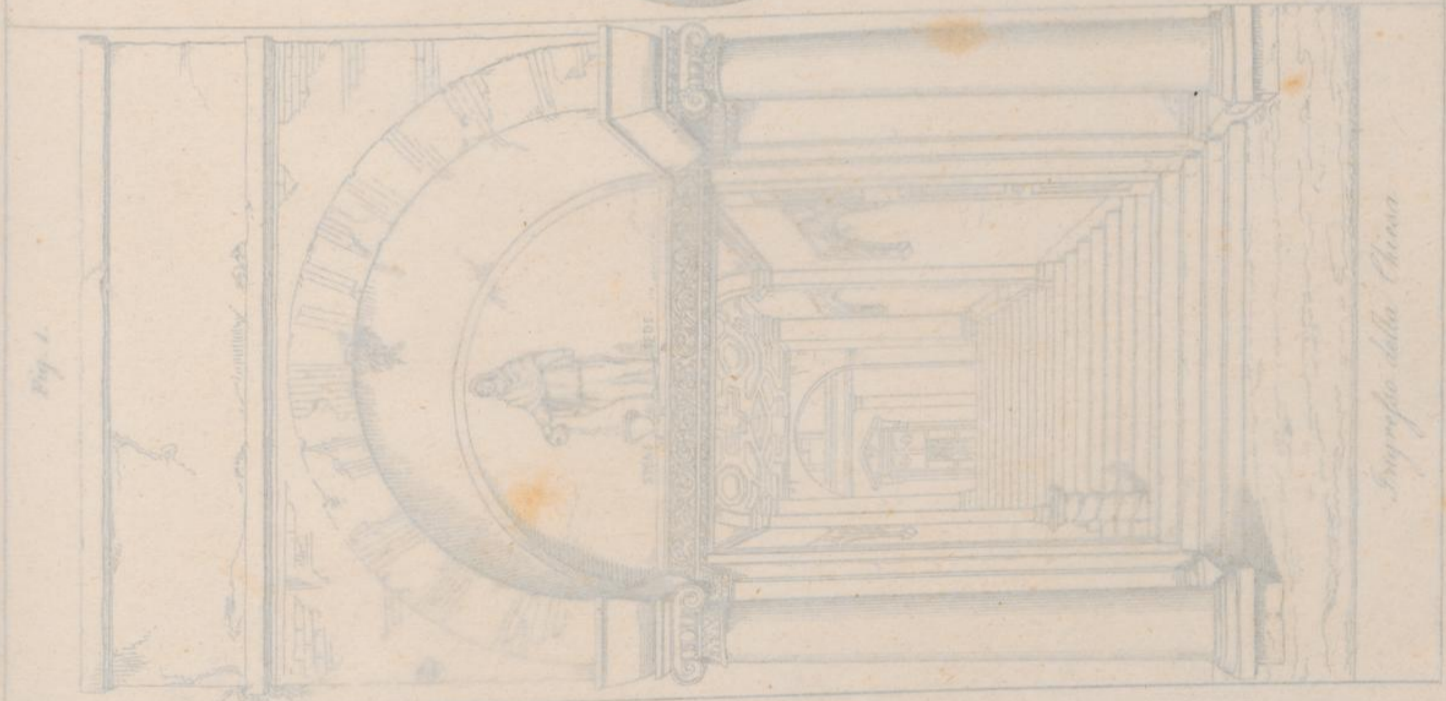
*Gua. Fontana dis. e. inc.*





VUE DE L'ESCALIER MONTANT À L'ÉGLISE DE STE-PRAXÈDE.

PLAN DE L'ÉGLISE.



VOL. II.

Fig. 1.

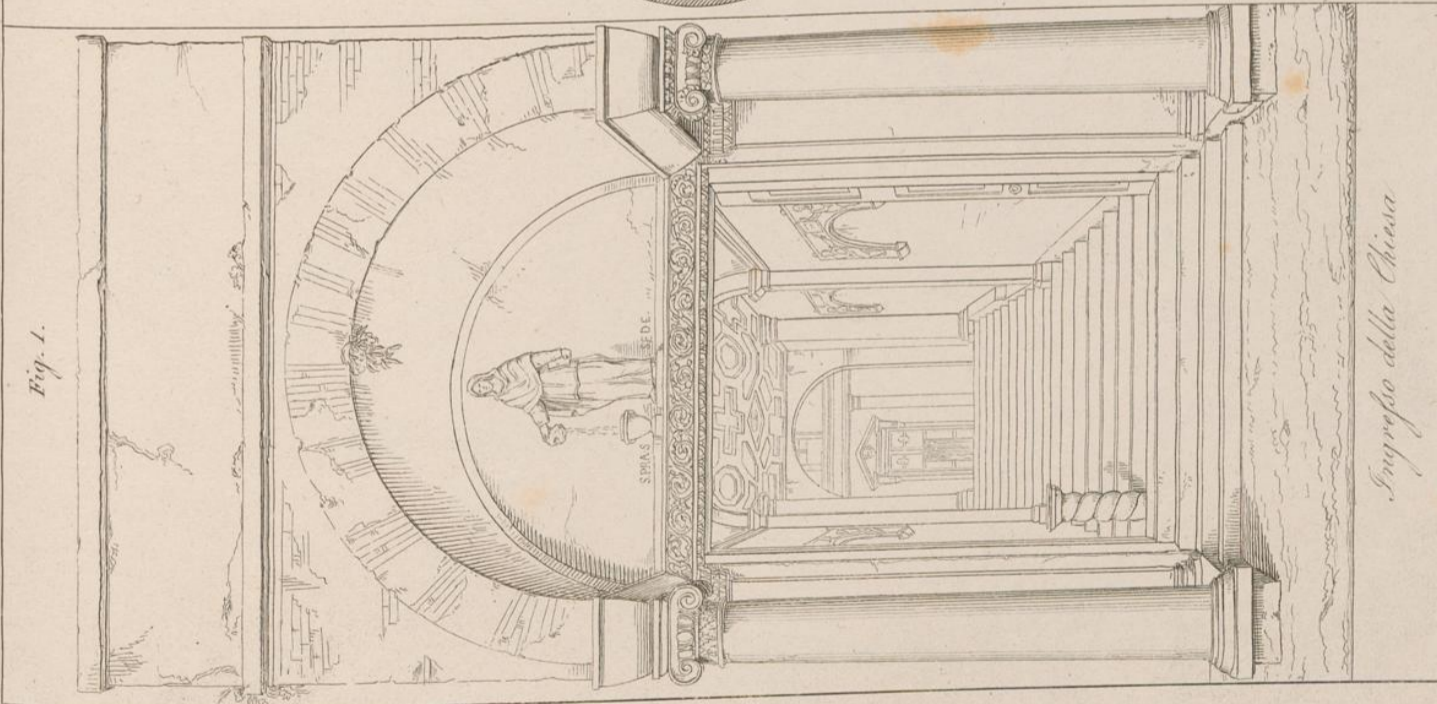
Fig. 2.

TAV. XXIII.

*Planta della Chiesa di S. Praxède*

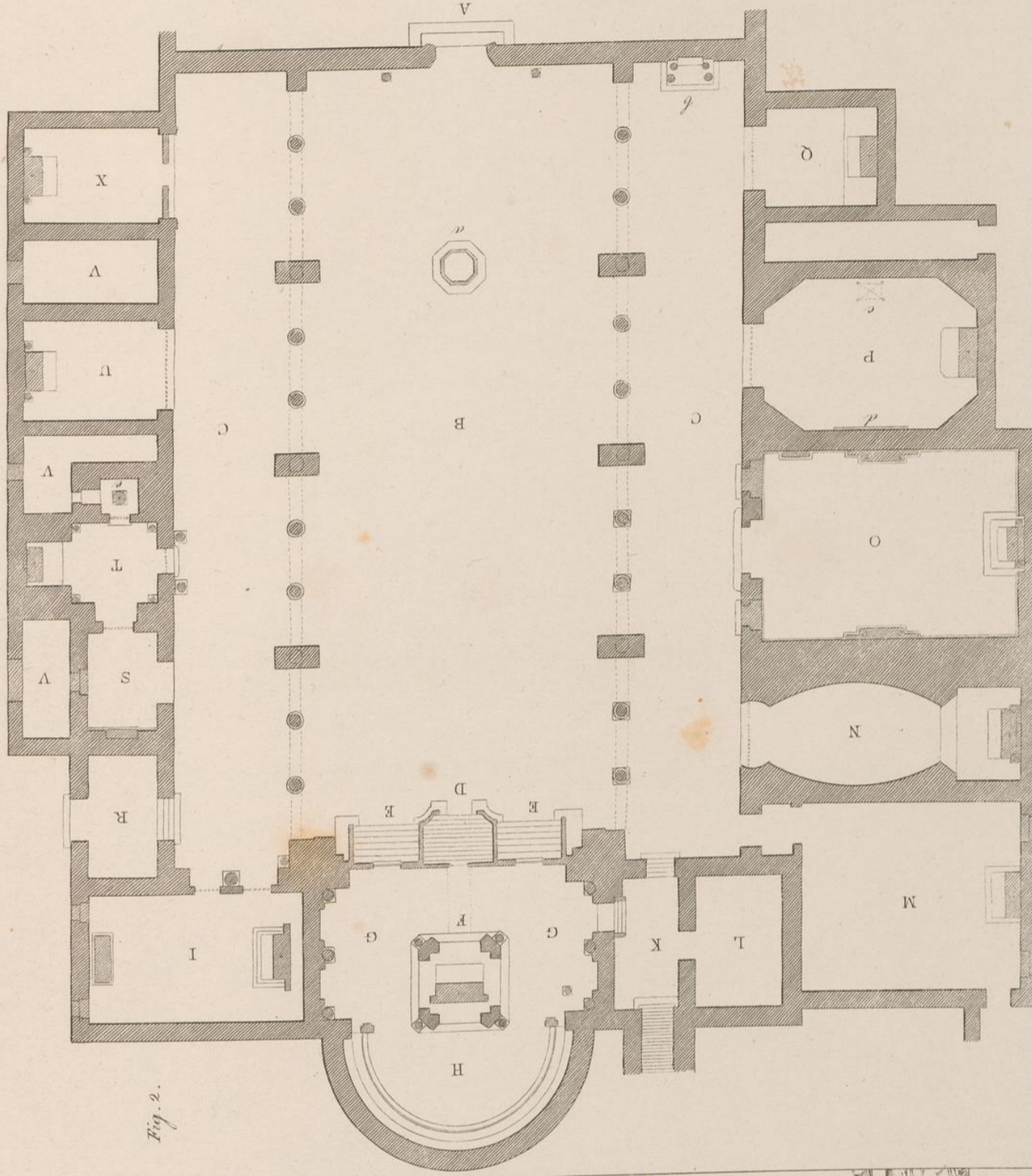
*Interno della Chiesa*

Fig. 1.



Planta della Chiesa di S. Prospero

Scala di Piedi 100



Giuseppe Battista del. e incis.

