

www.e-rara.ch

Species filicum

Hooker, William Jackson

London, M.DCCC.XLVI.-M.DCCC.LXIV. [1846-1864]

ETH-Bibliothek Zürich

Persistent Link: <https://doi.org/10.3931/e-rara-101357>

[Tab. CXI - CXX.]

www.e-rara.ch

Die Plattform e-rara.ch macht die in Schweizer Bibliotheken vorhandenen Drucke online verfügbar. Das Spektrum reicht von Büchern über Karten bis zu illustrierten Materialien – von den Anfängen des Buchdrucks bis ins 20. Jahrhundert.

e-rara.ch provides online access to rare books available in Swiss libraries. The holdings extend from books and maps to illustrated material – from the beginnings of printing to the 20th century.

e-rara.ch met en ligne des reproductions numériques d'imprimés conservés dans les bibliothèques de Suisse. L'éventail va des livres aux documents iconographiques en passant par les cartes – des débuts de l'imprimerie jusqu'au 20e siècle.

e-rara.ch mette a disposizione in rete le edizioni antiche conservate nelle biblioteche svizzere. La collezione comprende libri, carte geografiche e materiale illustrato che risalgono agli inizi della tipografia fino ad arrivare al XX secolo.

Nutzungsbedingungen Dieses Digitalisat kann kostenfrei heruntergeladen werden. Die Lizenzierungsart und die Nutzungsbedingungen sind individuell zu jedem Dokument in den Titelnformationen angegeben. Für weitere Informationen siehe auch [Link]

Terms of Use This digital copy can be downloaded free of charge. The type of licensing and the terms of use are indicated in the title information for each document individually. For further information please refer to the terms of use on [Link]

Conditions d'utilisation Ce document numérique peut être téléchargé gratuitement. Son statut juridique et ses conditions d'utilisation sont précisés dans sa notice détaillée. Pour de plus amples informations, voir [Link]

Condizioni di utilizzo Questo documento può essere scaricato gratuitamente. Il tipo di licenza e le condizioni di utilizzo sono indicate nella notizia bibliografica del singolo documento. Per ulteriori informazioni vedi anche [Link]

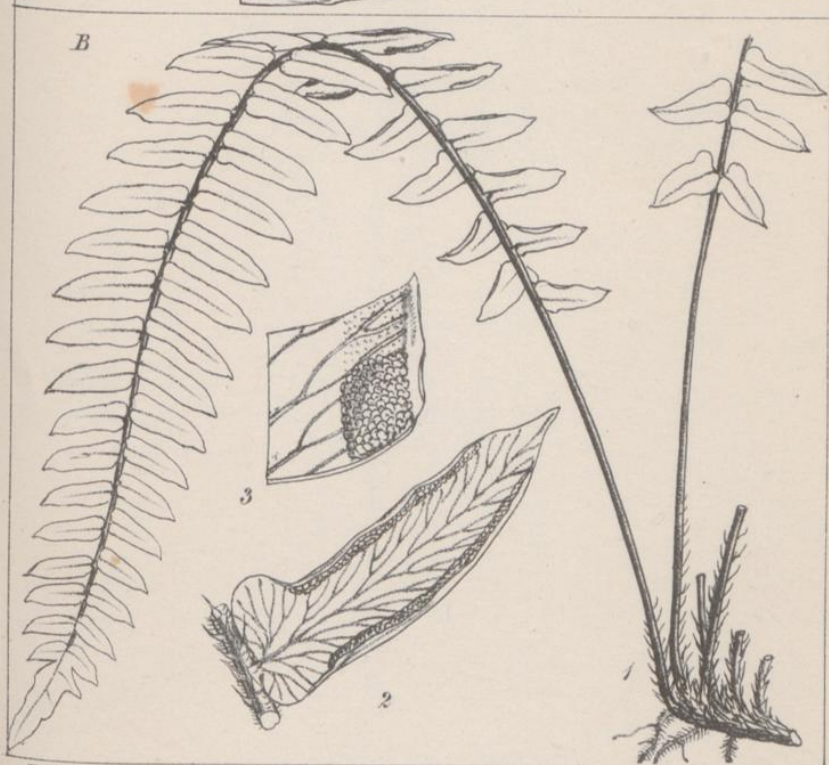
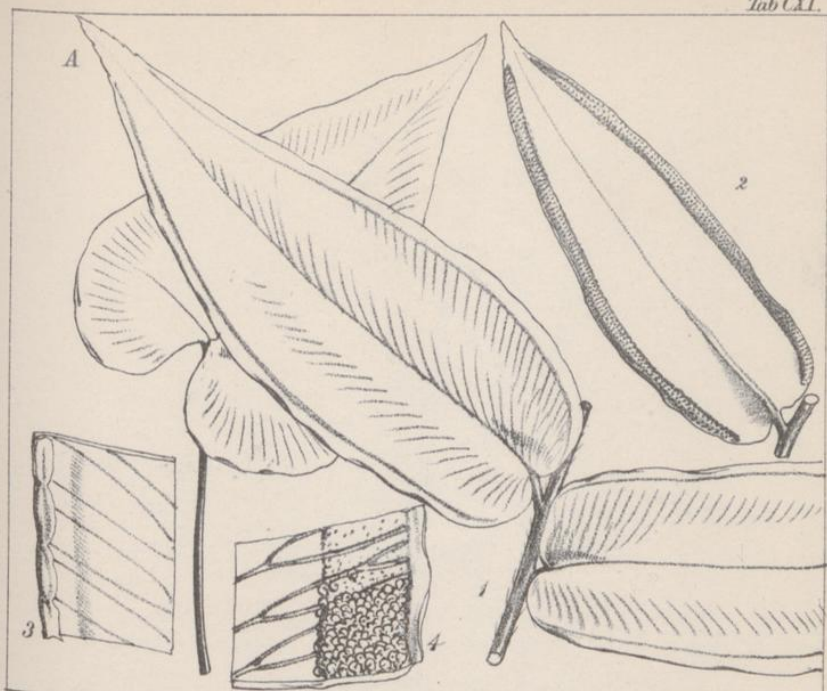
TAB. CXI.

A. PELLÆA PARADOXA, Hook.—p. 135.

A young entire (simple) and sterile frond; *nat. size.* Fig. 1. Two fertile pinnæ, upper side. Fig. 2. Fertile pinna, under side. Fig. 3. Portion of a very young fertile pinna to show the immature involucre and the veins; *magnified.* Fig. 4. Portion of a sorus, showing the receptacle of the sorus; *magnified.*

B. PELLÆA FALCATA, γ. NANA, Hook.—p. 136.

Fig. 1. Fertile frond of var. *nana*; *nat. size.* Fig. 2. Under side of a fertile pinna; and Fig. 3. Portion of a sorus; *magnified.*



Pitch del et lith.

Bauplin imp.

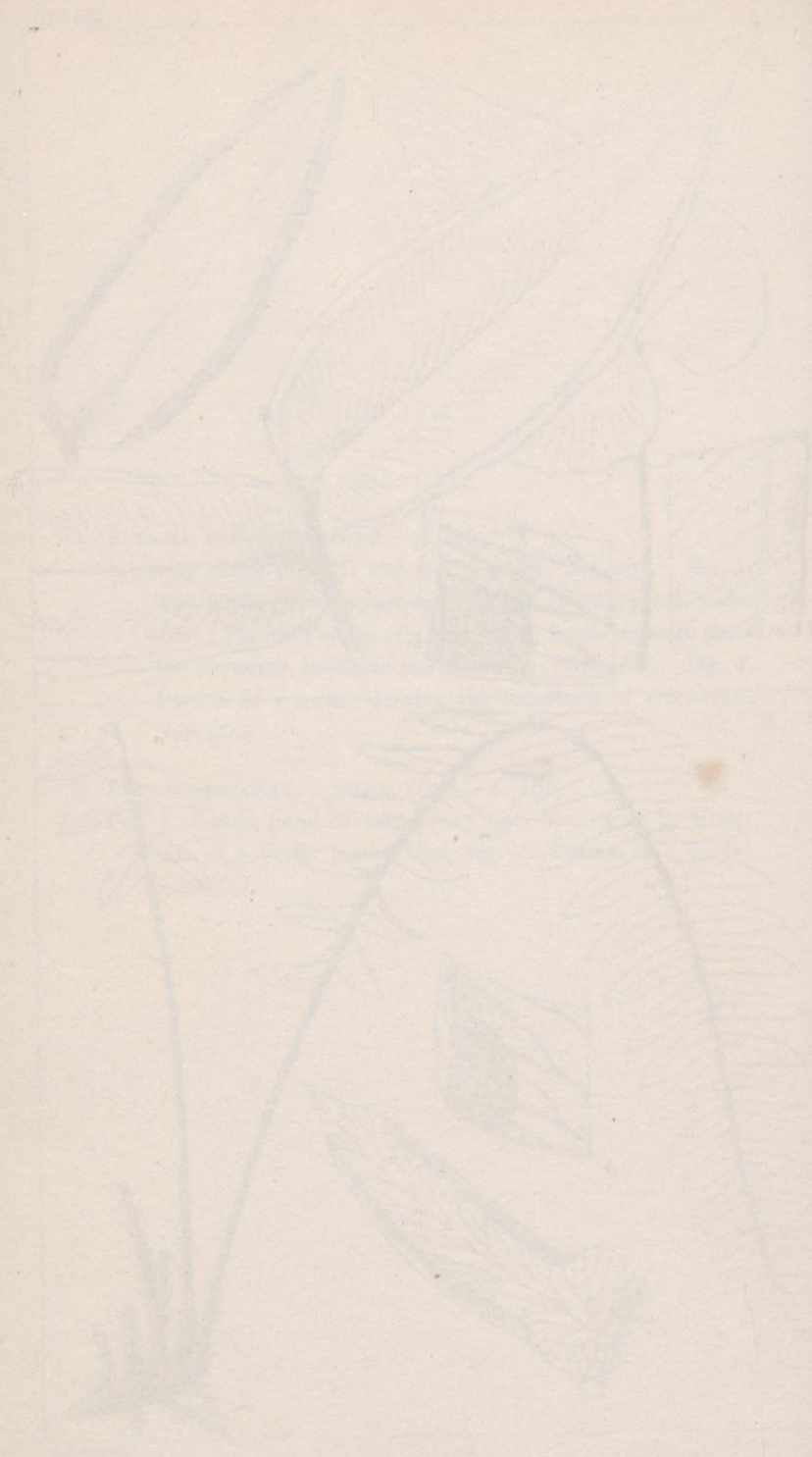


PLATE XXII

1. *Juncea macrocarpa*, A. DC. *Journal de Bot.* 1845, p. 133.
Fig. 1. Spike from the base, with the involucre of the glumes.
Fig. 2. Spike from the base, showing the involucre of the glumes.
Fig. 3. Spike from the base, showing the involucre of the glumes.
Fig. 4. Spike from the base, showing the involucre of the glumes.
Fig. 5. Spike from the base, showing the involucre of the glumes.
Fig. 6. Spike from the base, showing the involucre of the glumes.
Fig. 7. Spike from the base, showing the involucre of the glumes.
Fig. 8. Spike from the base, showing the involucre of the glumes.
Fig. 9. Spike from the base, showing the involucre of the glumes.
Fig. 10. Spike from the base, showing the involucre of the glumes.

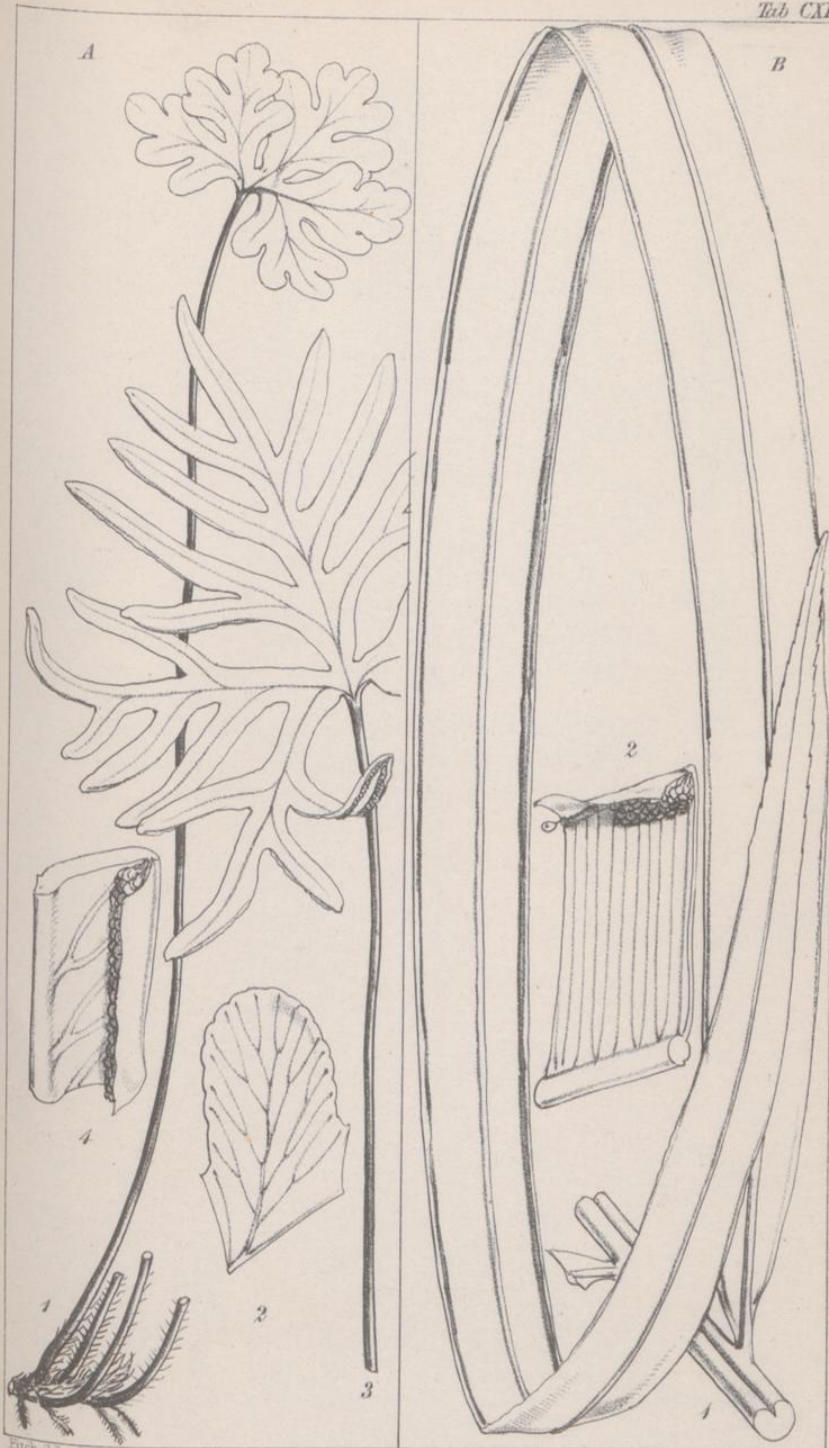
TAB. CXII.

A. PELLEA LOMARIACEA, β . COLUMBINA, Hook.—p. 133.

Fig. 1. Sterile frond; *nat. size*. Fig. 2. Segment of the same, showing the venation; *magnified*. Fig. 3. Fertile frond; *nat. size*. Fig. 4. Portion of a sorus; *magnified*.

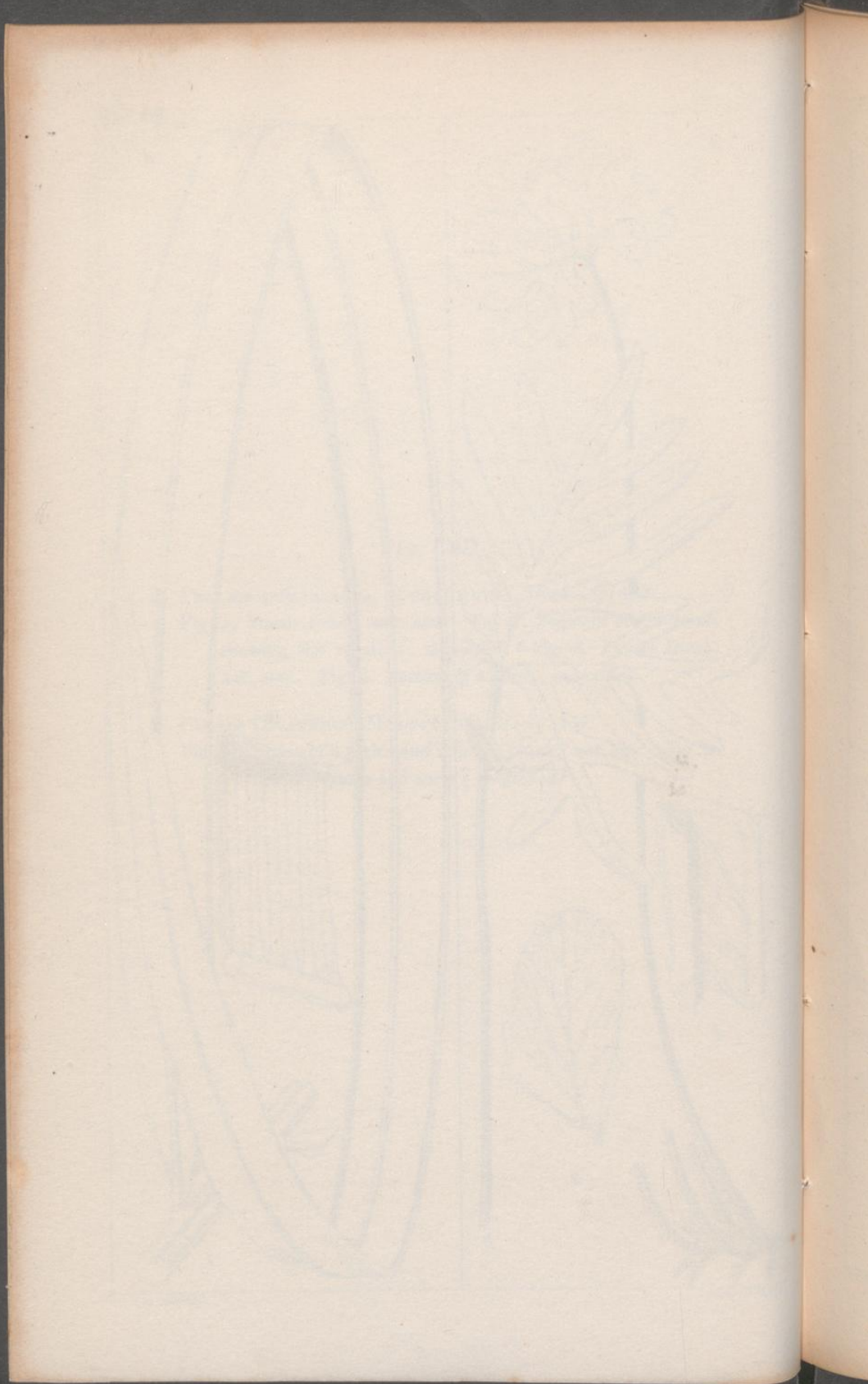
B. PTERIS (EUPTERIS) MOLUCCANA, Bl.—p. 158.

Fig. 1. Portion of a rachis and a fertile pinna; *nat. size*. Fig. 2. Portion of a pinna and sorus; *magnified*.



Fucus del et lith.

Pimpin imp.



TAB. CXIII.

A. *PELLÆA DURA*, *Hook.*—p. 139.

Fig. 1. Fertile frond; *nat. size.* Fig. 2. Under side of a fertile pinna; and Fig. 3. Portion of a sorus; *magnified.*

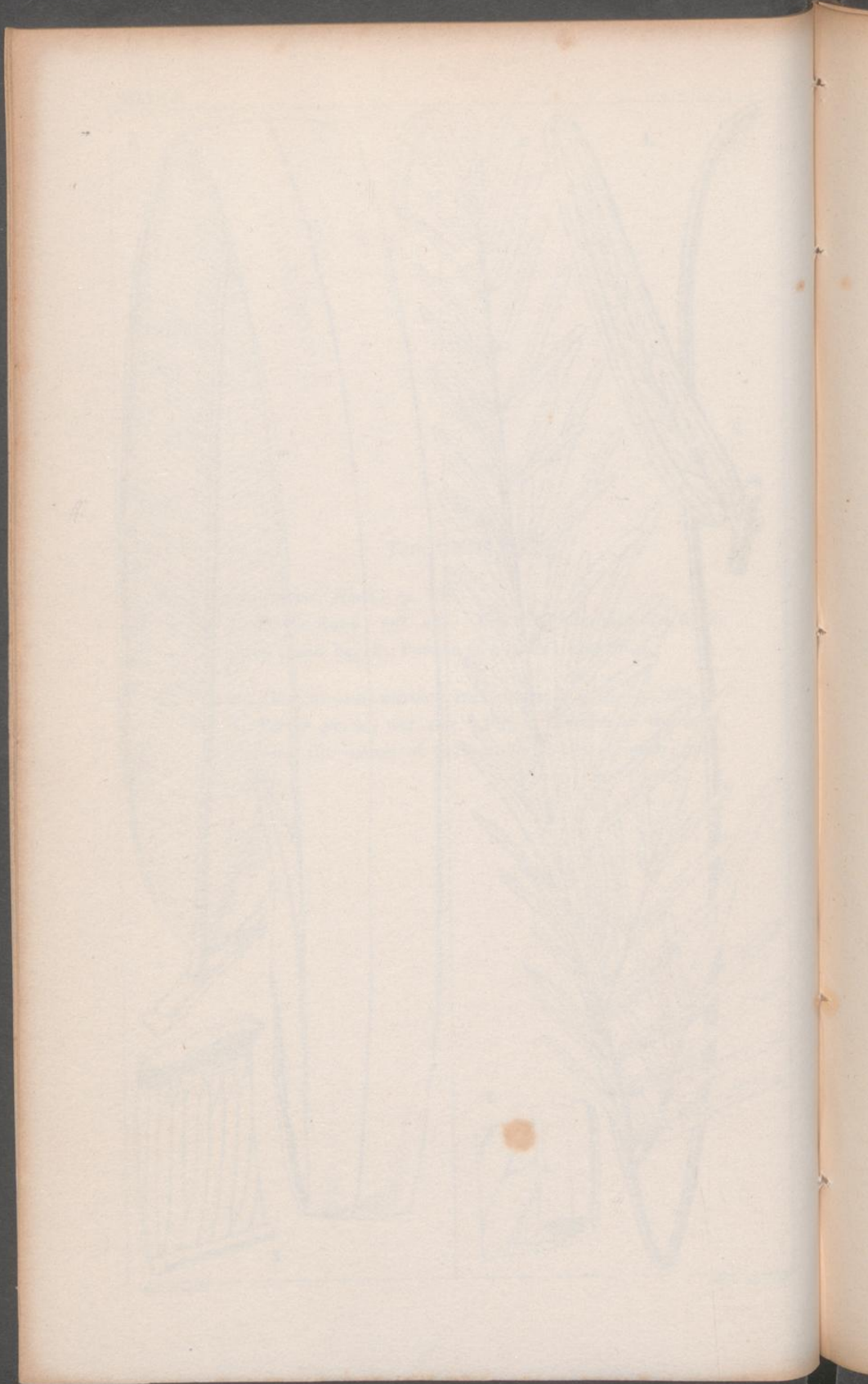
B. *PTERIS (HETEROPHLEBIUM) GRANDIFOLIUM*, *L.*—p. 201.

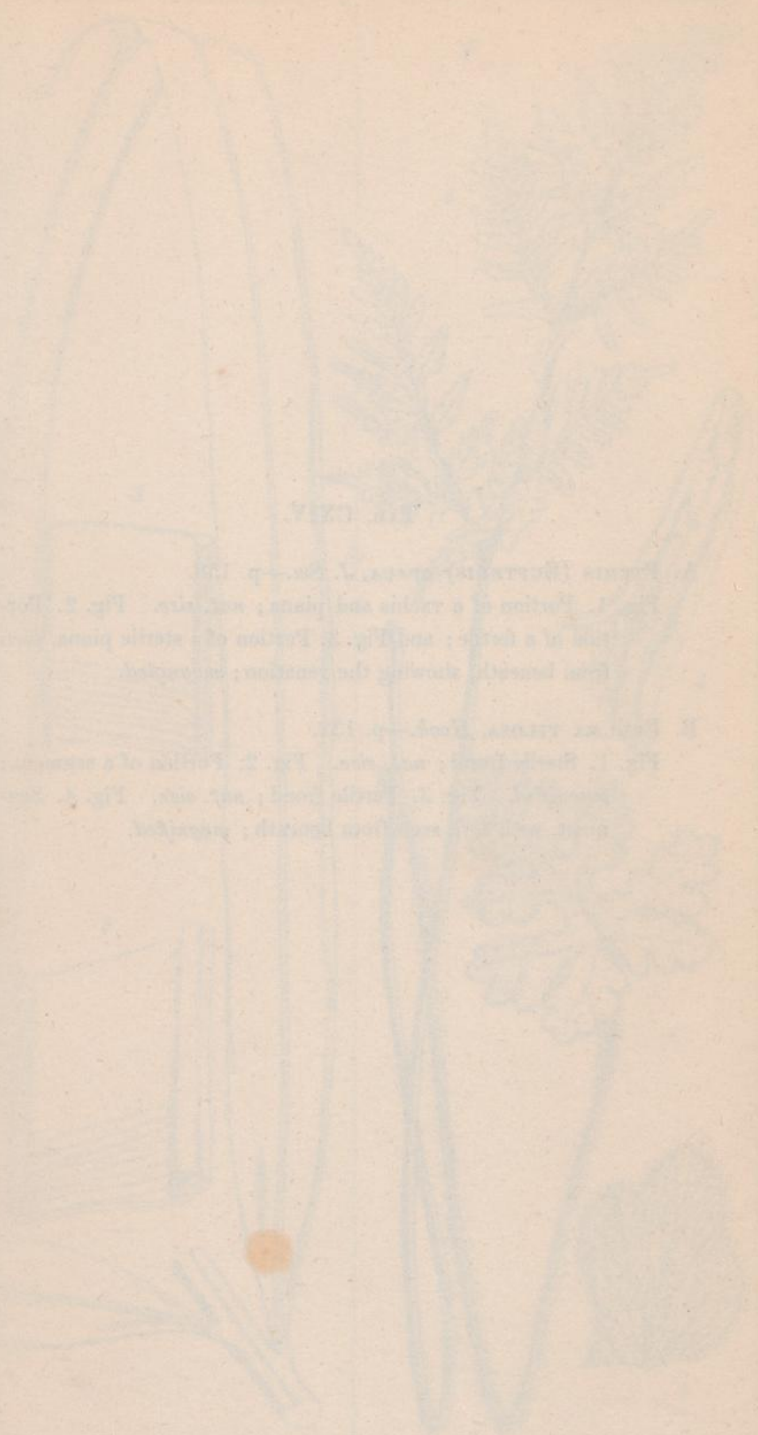
Fig. 1. Fertile pinna; *nat. size.* Fig. 2. Portion of the same, showing the nature of the sorus and the venation; *magnified.*



Patch del et lin.

Sampla imp.





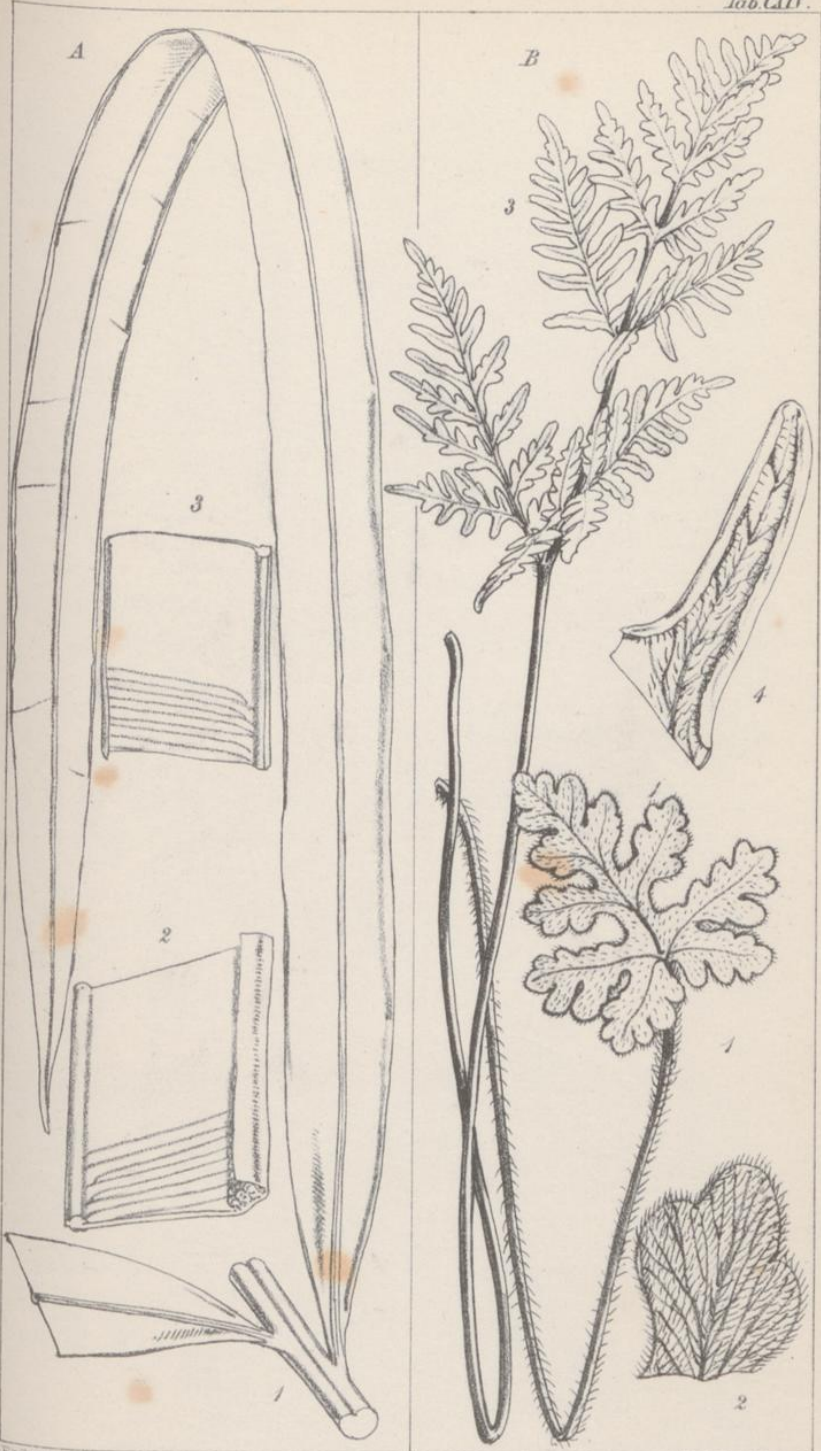
TAB. CXIV.

A. PTERIS (EUPTERIS) OPACA, *J. Sm.*—p. 158.

Fig. 1. Portion of a rachis and pinna; *nat. size.* Fig. 2. Portion of a fertile; and Fig. 3. Portion of a sterile pinna, seen from beneath, showing the venation; *magnified.*

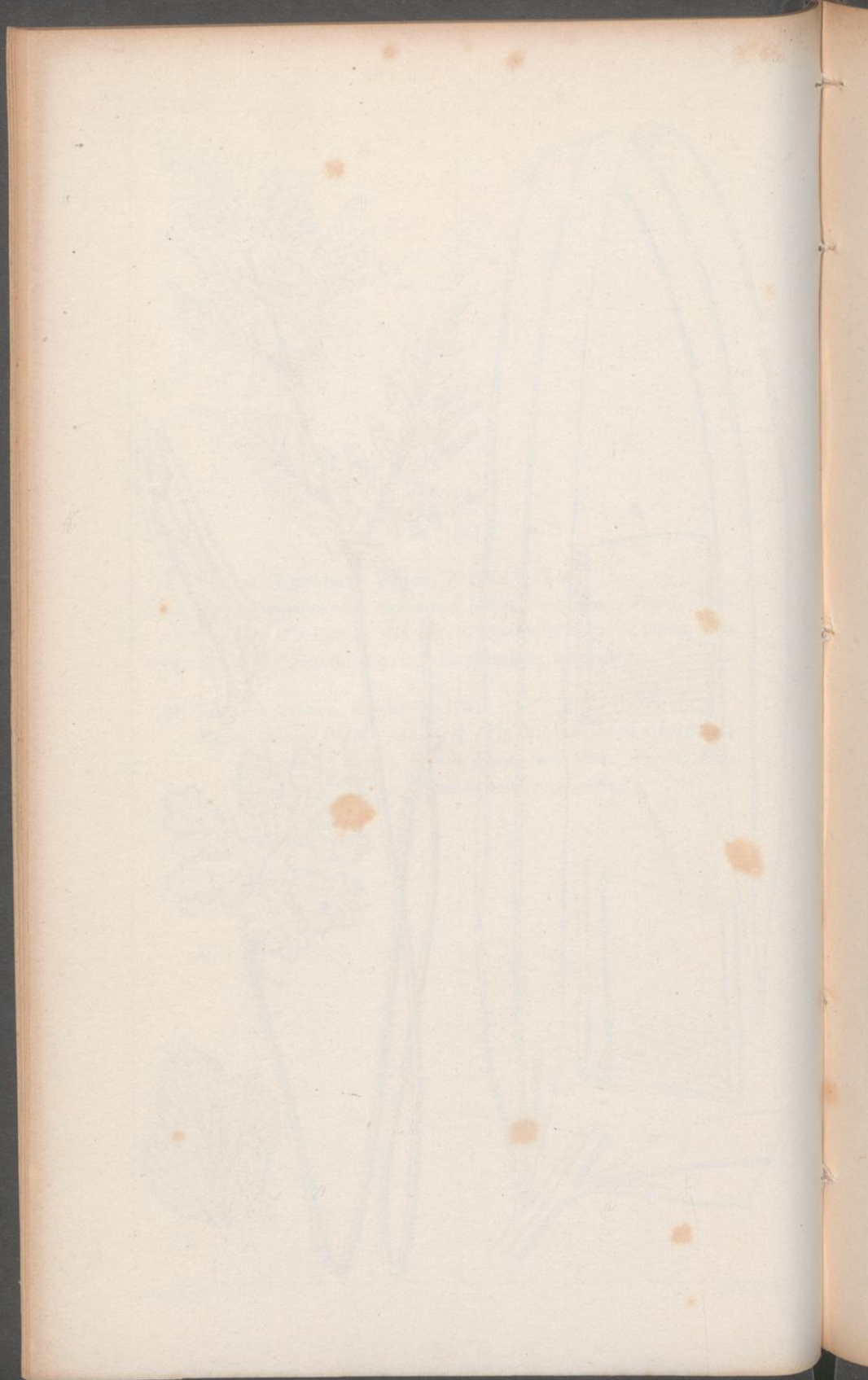
B. PELLÆA PILOSA, *Hook.*—p. 132.

Fig. 1. Sterile frond; *nat. size.* Fig. 2. Portion of a segment; *magnified.* Fig. 3. Fertile frond; *nat. size.* Fig. 4. Segment, with sori, seen from beneath; *magnified.*



Ench. del. et. lit.

Bumplin imp.



TAB. CXV.

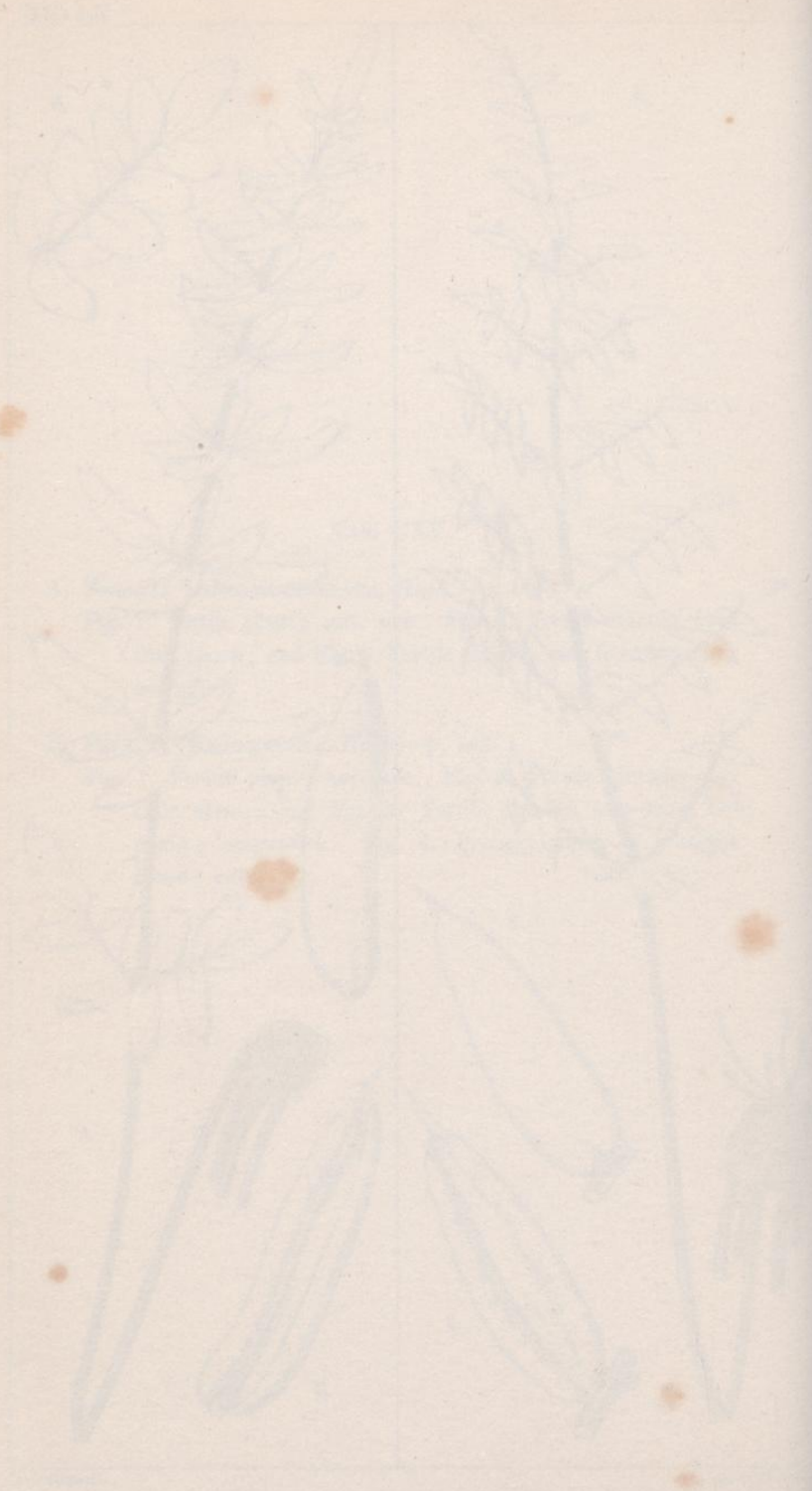
A. *PELLÆA LONGIMUCRONATA*, Hook.—p. 143.

Fig. 1. Fertile plant; *nat. size.* Fig. 2. Fertile pinnule, seen from above; and Fig. 3. Fertile pinnule, seen from beneath; *magnified.*

B. *PELLÆA WRIGHTIANA*, Hook.—p. 142.

Fig. 1. Fertile plant; *nat. size.* Fig. 2. Fertile pinnule, seen from above; and Fig. 3. Fertile pinnule, seen from beneath; *magnified.* Fig. 4. Primary pinna of a sterile frond; *nat. size.*





TAB. CXVI.

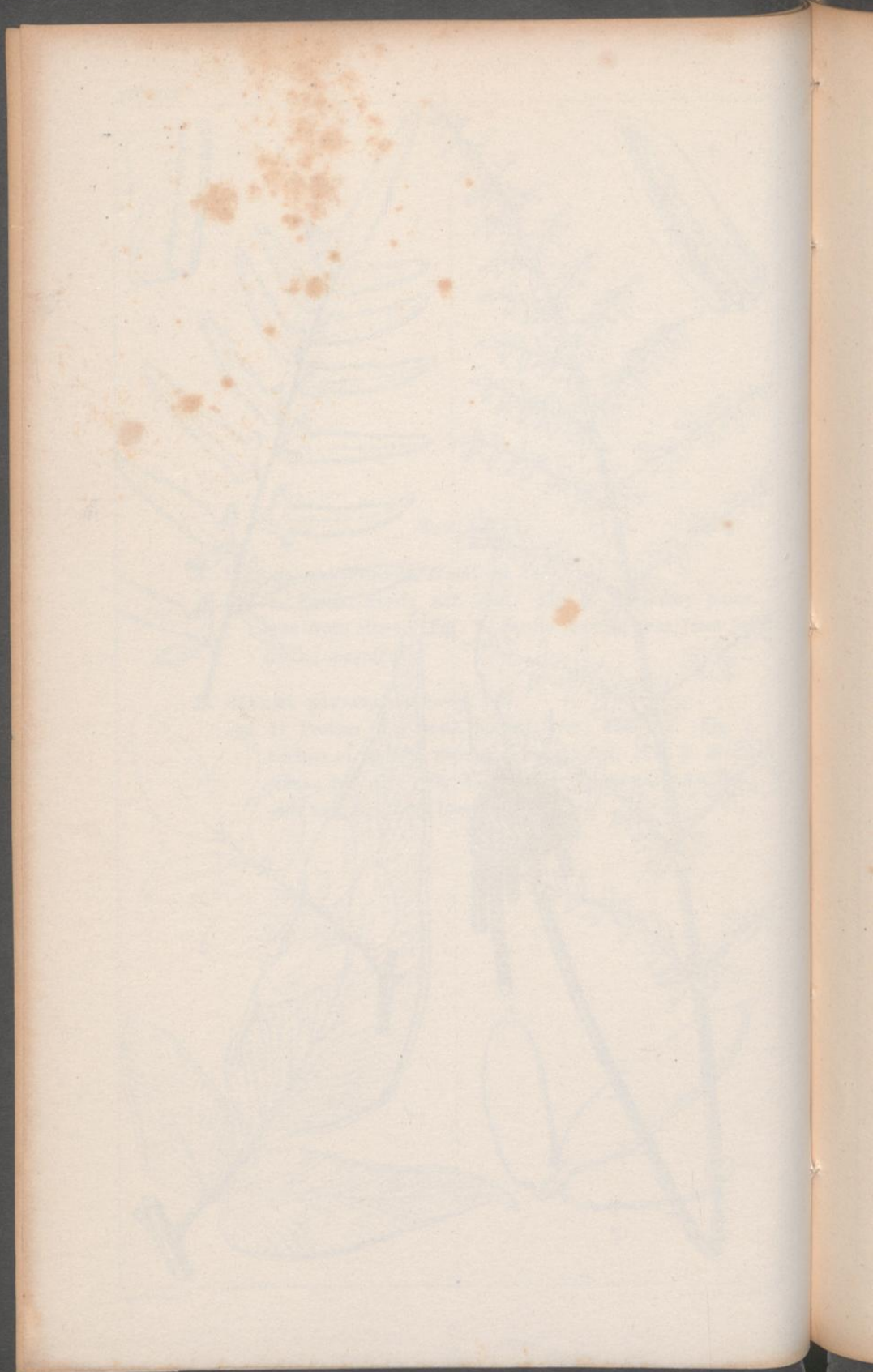
A. PELLÆA ORNITHOPUS, *Hook.*—p. 144.

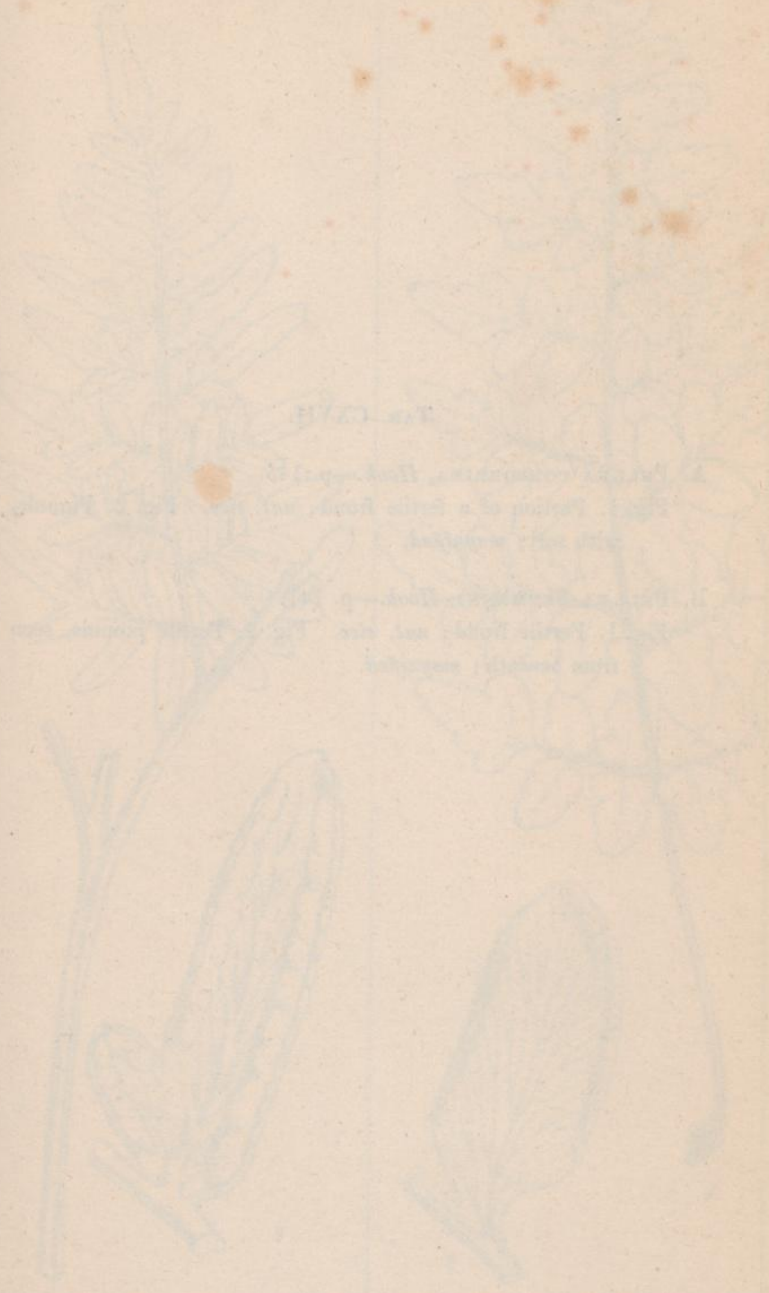
Fig. 1. Fertile frond; *nat. size.* Fig. 2. Secondary pinna, seen from above. Fig. 3. Fertile pinnule, seen from beneath; *magnified.*

B. PELLÆA HASTATA, *Link.*—p. 145.

Fig. 1. Portion of a frond, normal form; *nat. size.* Fig. 2. Portion of pinnule, with sorus; *magnified.* Fig. 3. Sterile pinna; *nat. size.* Fig. 4. Pinna of var. *macrophylla*, *Kze.*, with sori, seen from beneath; *nat. size.*







1877

Faint, illegible text, likely bleed-through from the reverse side of the page.

TAB. CXVII.

A. PELLEA CONSOBRINA, *Hook.*—p. 145.

Fig. 1. Portion of a fertile frond; *nat. size.* Fig. 2. Pinnule, with sori; *magnified.*

B. PELLEA SEEMANNI, *Hook.*—p. 141.

Fig. 1. Fertile frond; *nat. size.* Fig. 2. Fertile pinnule, seen from beneath; *magnified.*

A



B





PLATE XVIII

Faint, illegible text, likely bleed-through from the reverse side of the page.



TAB. CXVIII.

A. PELLÆA BOIVINI, *Hook.*—p. 147.

Fig. 1. Fertile frond; *nat. size.* Fig. 2. Upper side of a fertile pinnule; and Fig. 3. Under side of fertile pinnules; *magnified.*

B. PELLÆA SKINNERI, *Hook.*—p. 141.

Fig. 1. Fertile frond; *nat. size.* Fig. 2. Fertile segment, seen from beneath; *magnified.*



Etch del et lith.

Paraphin imp

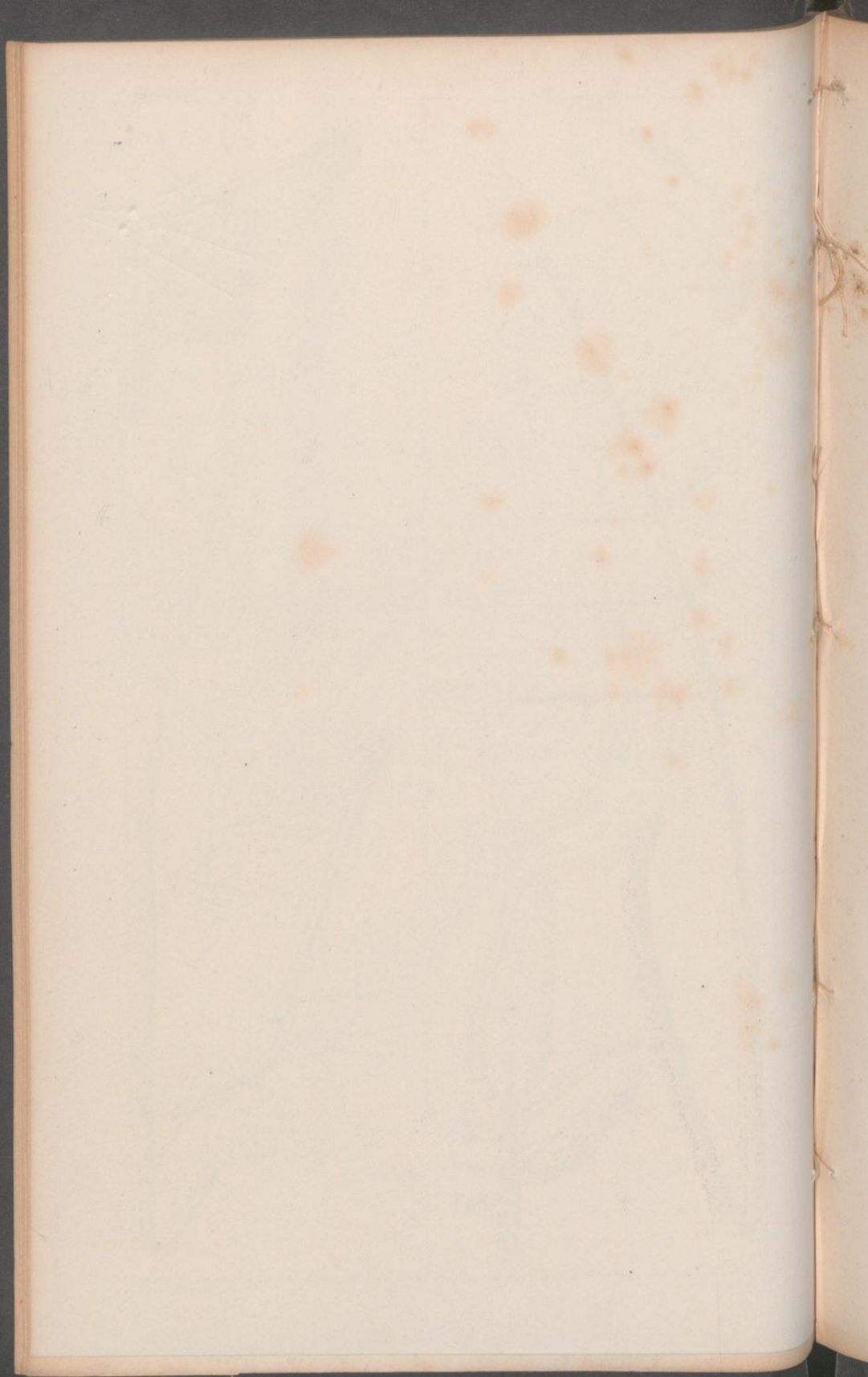
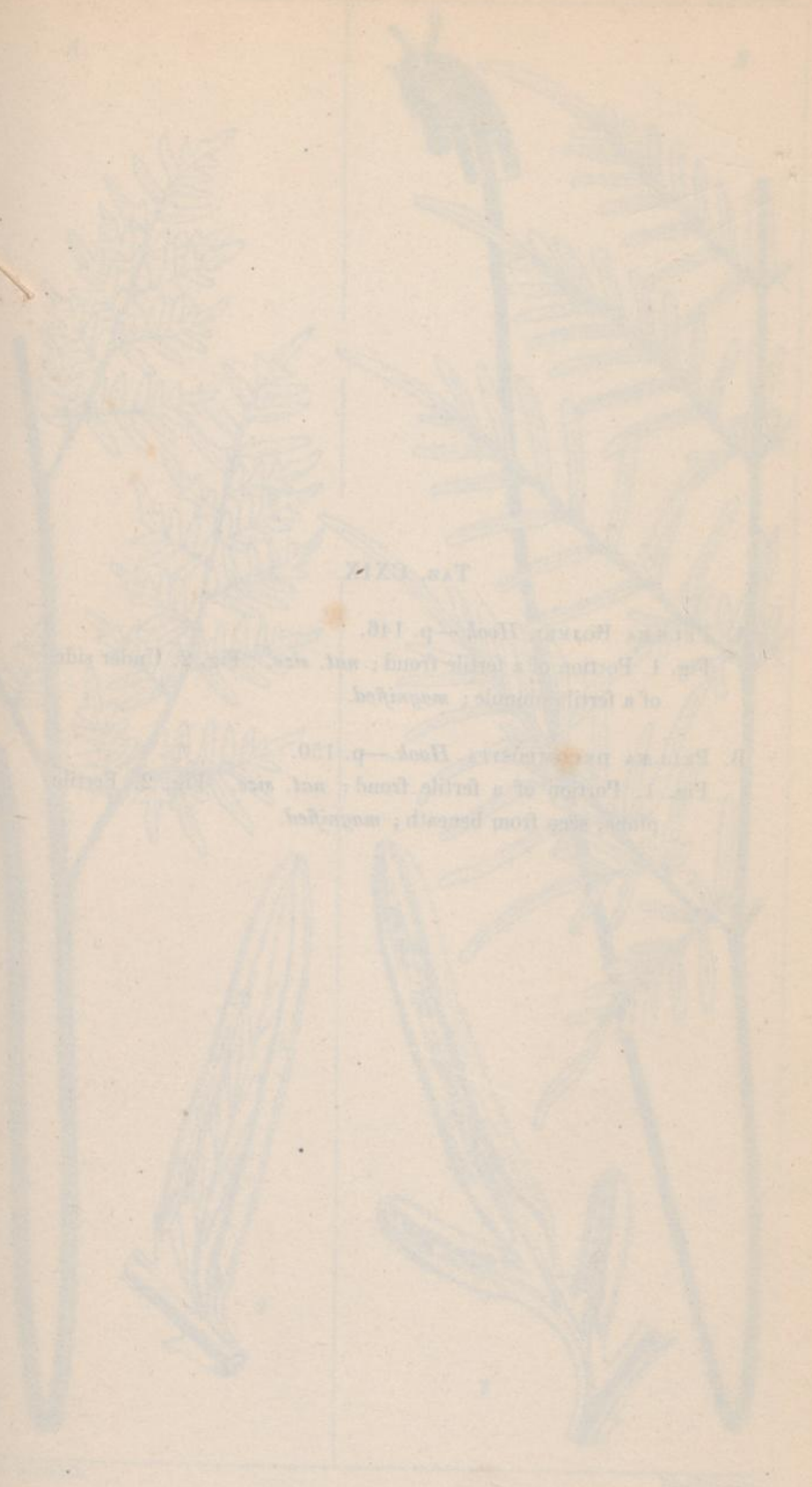


PLATE XXXI

Fig. 1. Portion of a fertile frond; not seen from beneath; magnified.
Fig. 2. Portion of a sterile frond; not seen from beneath; magnified.



TAB. CXIX.

A. PELLÆA BOJERI, *Hook.*—p. 146.

Fig. 1. Portion of a fertile frond; *nat. size.* Fig. 2. Under side of a fertile pinnule; *magnified.*

B. PELLÆA DECOMPOSITA, *Hook.*—p. 150.

Fig. 1. Portion of a fertile frond; *nat. size.* Fig. 2. Fertile pinna, seen from beneath; *magnified.*

A

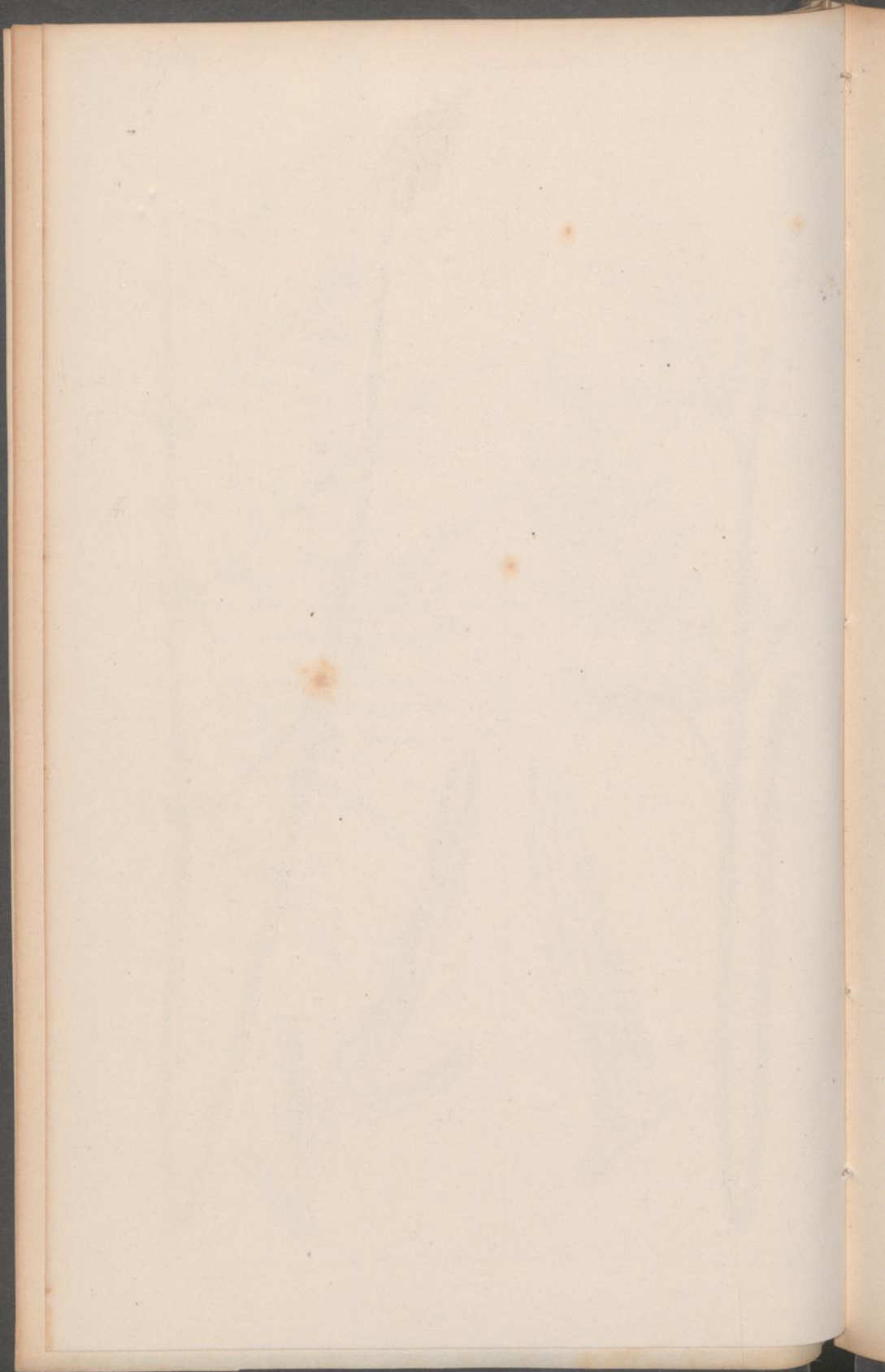


Fitch del etlith

B



Pamplin imp.



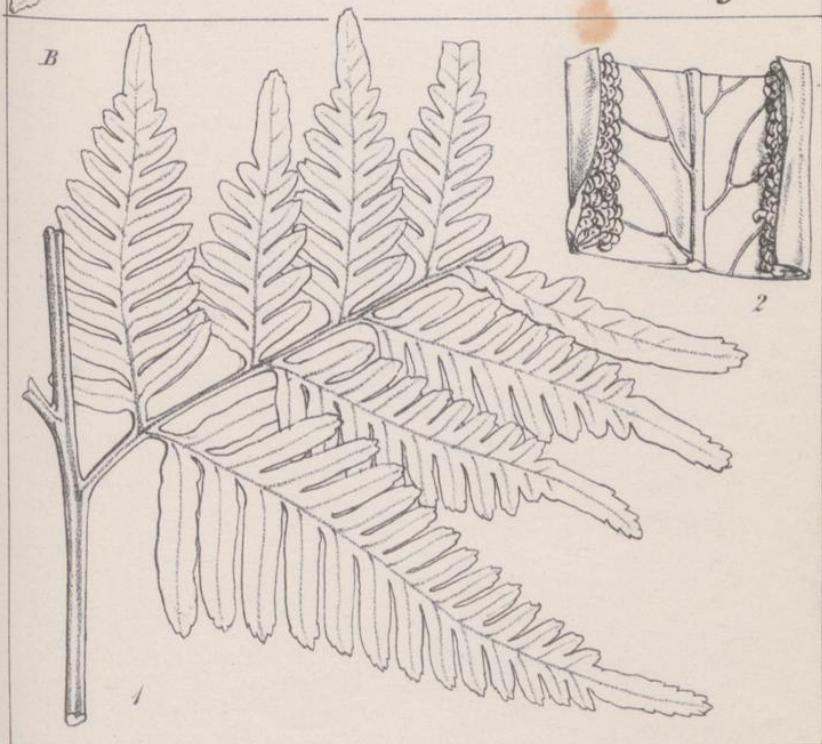
TAB. CXX.

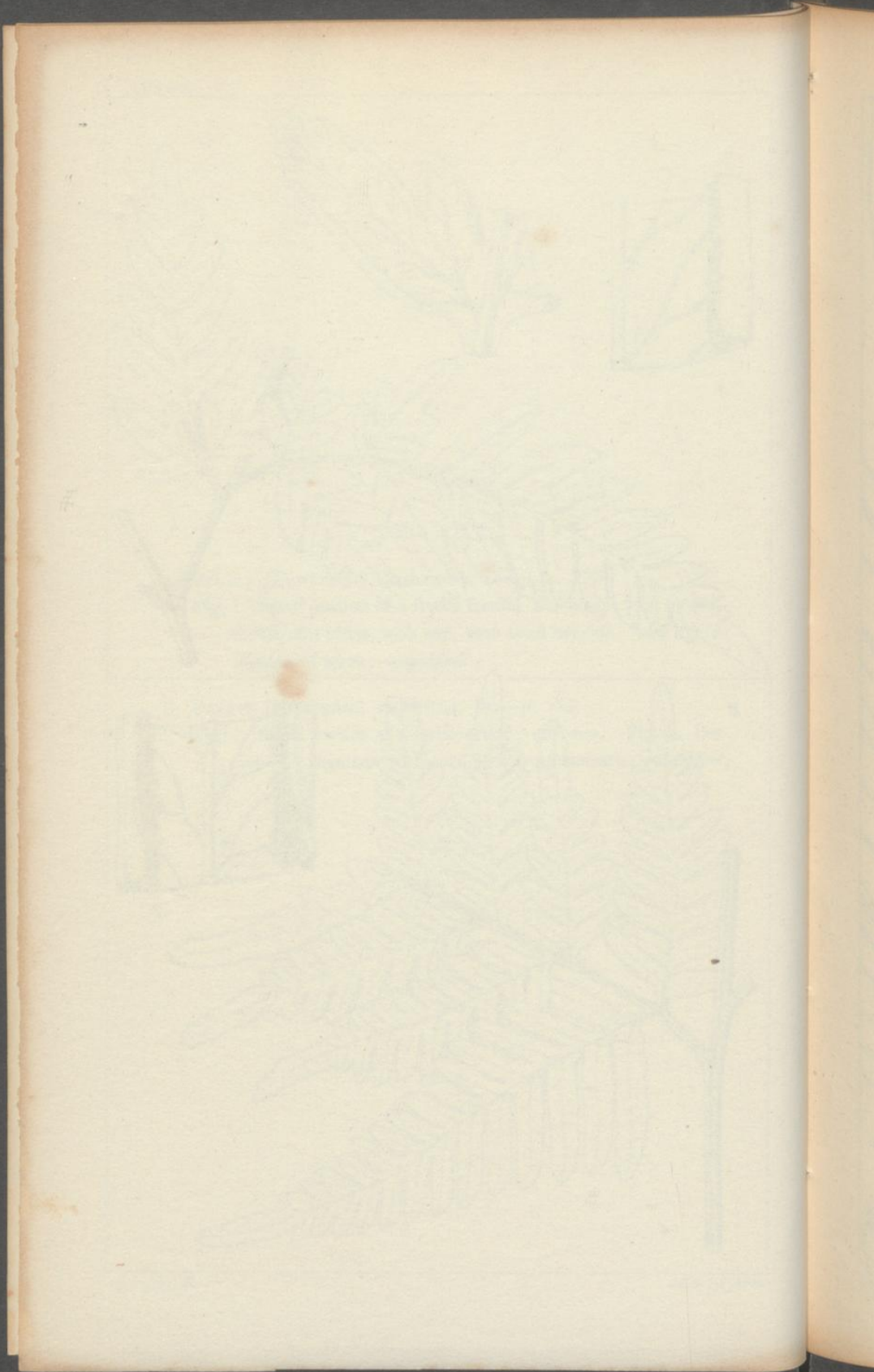
A. PTERIS (EUPTERIS) CHILENSIS, Desv.—p. 175.

Fig. 1. Small portion of a fertile frond; *nat. size*. Fig. 2. Segments of a pinna, with sori, seen from beneath; and Fig. 3. Portion of sorus; *magnified*.

B. PTERIS (EUPTERIS) TREMULA, Br.—p. 174.

Fig. 1. Small portion of a fertile frond; *nat. size*. Fig. 2. Portion of a segment, with sori, seen from beneath; *magnified*.





THE INDEX

THE INDEX
OF THE
PUBLISHED PAPERS
OF THE
AMERICAN BOTANICAL SOCIETY
FOR THE YEAR 1900