

www.e-rara.ch

**Catalogue of a collection of samples of raw and partly-manufactured
produce shown in the exhibition of 1851**

Weltausstellung 1851, London

London, 1853

ETH-Bibliothek Zürich

Shelf Mark: Rar 6337

Persistent Link: <https://doi.org/10.3931/e-rara-24521>

www.e-rara.ch

Die Plattform e-rara.ch macht die in Schweizer Bibliotheken vorhandenen Drucke online verfügbar. Das Spektrum reicht von Büchern über Karten bis zu illustrierten Materialien – von den Anfängen des Buchdrucks bis ins 20. Jahrhundert.

e-rara.ch provides online access to rare books available in Swiss libraries. The holdings extend from books and maps to illustrated material – from the beginnings of printing to the 20th century.

e-rara.ch met en ligne des reproductions numériques d'imprimés conservés dans les bibliothèques de Suisse. L'éventail va des livres aux documents iconographiques en passant par les cartes – des débuts de l'imprimerie jusqu'au 20e siècle.

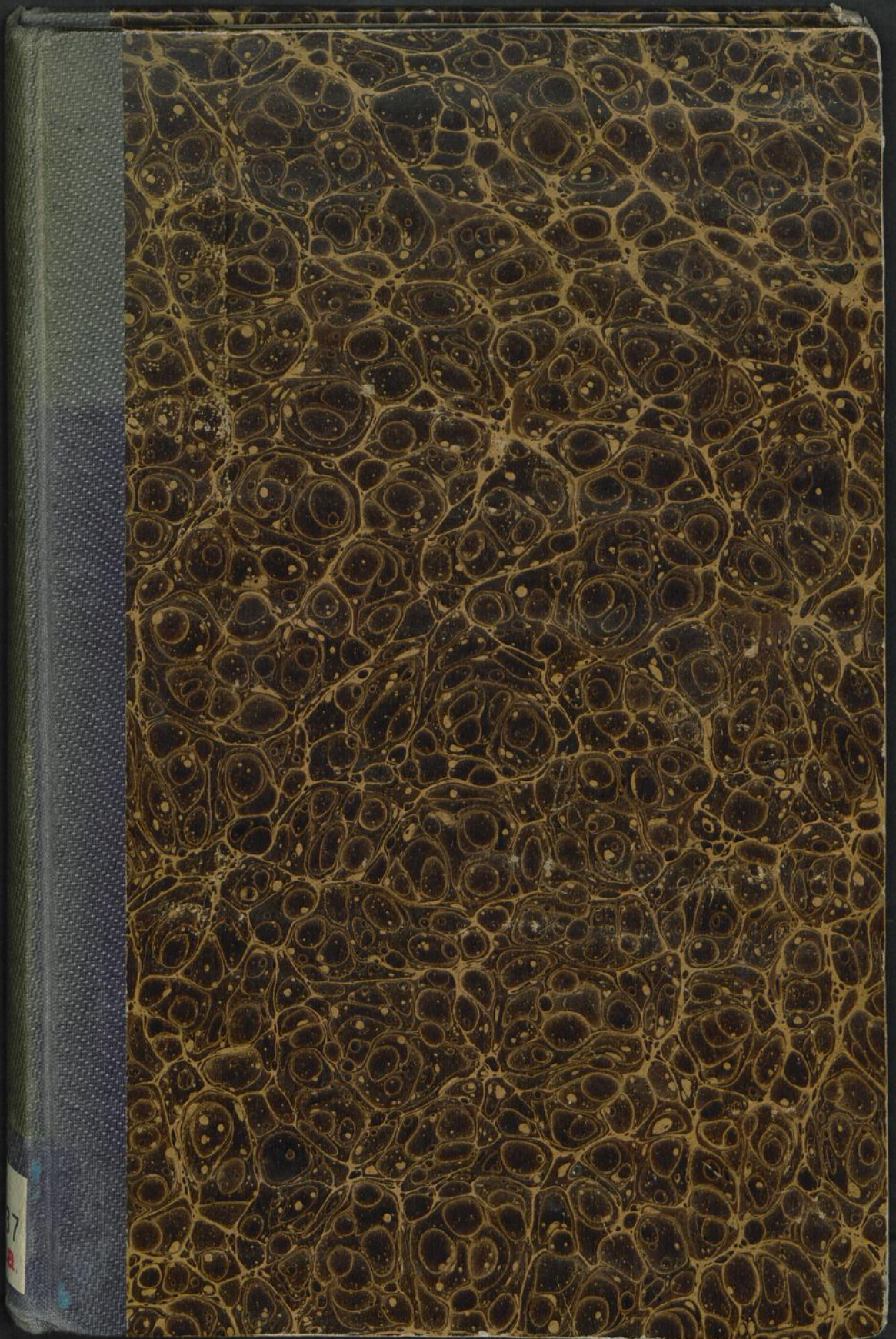
e-rara.ch mette a disposizione in rete le edizioni antiche conservate nelle biblioteche svizzere. La collezione comprende libri, carte geografiche e materiale illustrato che risalgono agli inizi della tipografia fino ad arrivare al XX secolo.

Nutzungsbedingungen Dieses Digitalisat kann kostenfrei heruntergeladen werden. Die Lizenzierungsart und die Nutzungsbedingungen sind individuell zu jedem Dokument in den Titelinformationen angegeben. Für weitere Informationen siehe auch [Link]

Terms of Use This digital copy can be downloaded free of charge. The type of licensing and the terms of use are indicated in the title information for each document individually. For further information please refer to the terms of use on [Link]

Conditions d'utilisation Ce document numérique peut être téléchargé gratuitement. Son statut juridique et ses conditions d'utilisation sont précisés dans sa notice détaillée. Pour de plus amples informations, voir [Link]

Condizioni di utilizzo Questo documento può essere scaricato gratuitamente. Il tipo di licenza e le condizioni di utilizzo sono indicate nella notizia bibliografica del singolo documento. Per ulteriori informazioni vedi anche [Link]

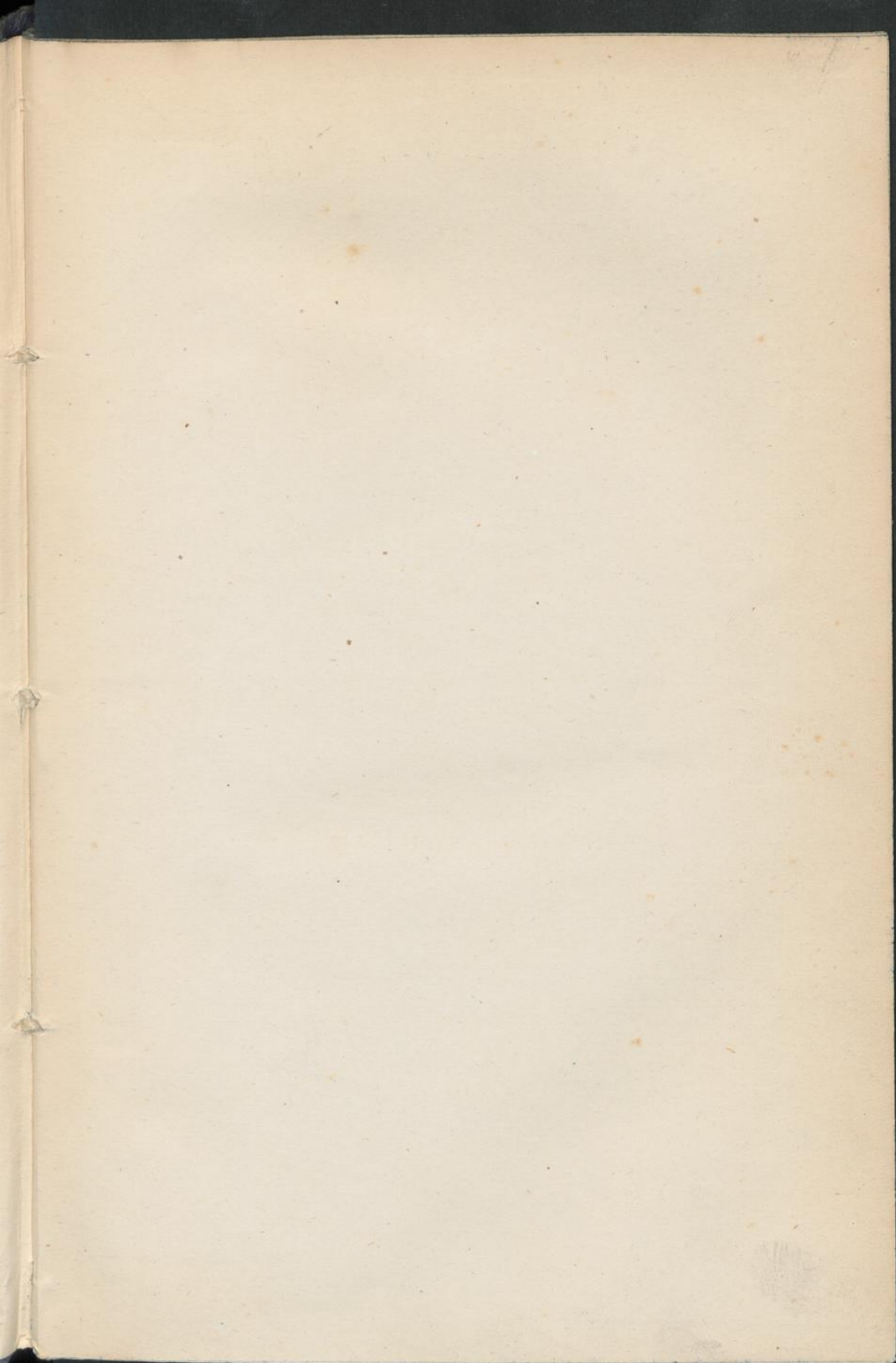


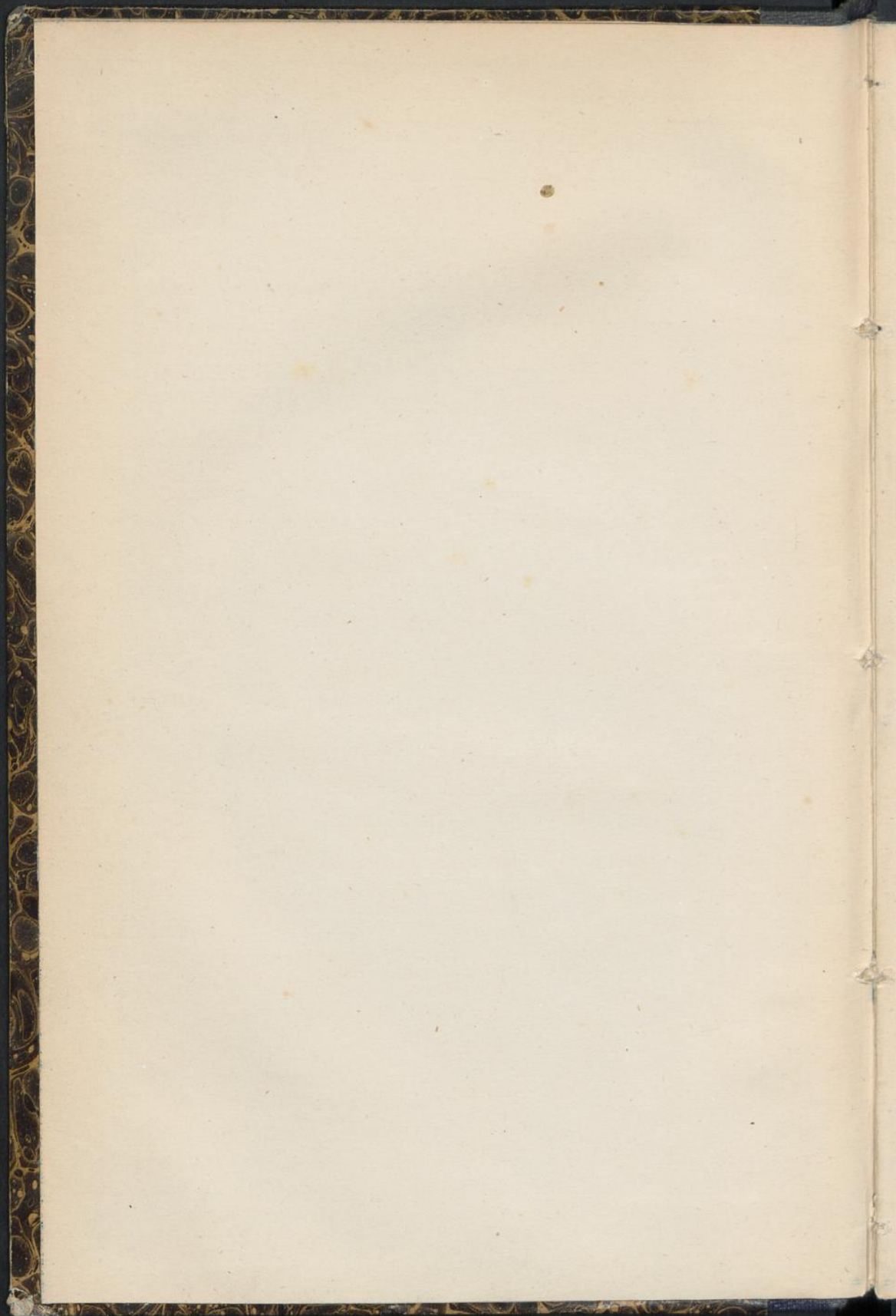
7

~~9537. Rev~~

Rev 6337

+





Exhibition of 1851.

CATALOGUE

OF A

COLLECTION OF SAMPLES

OF

RAW AND PARTLY-MANUFACTURED PRODUCE

SHOWN IN THE EXHIBITION OF 1851 :

PREPARED, BY ORDER OF HER MAJESTY'S COMMISSIONERS,
FOR TRANSMISSION TO FOREIGN COUNTRIES.



LONDON :

PRINTED BY WILLIAM CLOWES AND SONS,
STAMFORD STREET AND CHARING CROSS.

1853.



INTRODUCTION.

AT the close of the Exhibition of 1851, Her Majesty's Commissioners invited the Exhibitors to furnish samples of the produce exhibited by them, with a view to their being preserved in some suitable place, as an interesting record of the Exhibition, and of the condition of industry at that period.

It was also thought that such a collection might hereafter advantageously form the nucleus of a more extensive museum, in which samples of the various products of human industry of all periods and countries might be arranged with strict reference to their commercial utility. Her Majesty's Commissioners have already alluded to this in their Second Report to the Secretary of State, pp. 11 and 30; and they have reason to hope that some progress is being made towards the realization of such a plan.

With this object in view, a request was addressed to all the British exhibitors and to the Commissioners of foreign countries, to contribute samples of the produce exhibited by them,—the result of which has been detailed in the First Report of Her Majesty's Commissioners to the Secretary of State, Appendix No. XXXVII.

Some of the Foreign Commissioners having expressed a wish that in return they should be supplied with samples of British produce, Her Majesty's Commissioners lost no time in taking such steps as were in their power for this object, and the collections now

formed are the result of their endeavours to meet the views of the Foreign Commissioners.

Many delays occurred in realizing this intention, the principal of which was, that at the time this step was determined upon, the greater part of the exhibitors had already actually removed their goods, and it became necessary to open fresh communications with them.

These difficulties have, however, now been overcome, and the following is a Catalogue of the specimens of which each collection is composed.

Facilities of transport, cost, and other considerations, induced the Commissioners to think that a collection of raw or only partly manufactured produce would be most suitable for the object in view; and it will therefore be found to be confined, with very few exceptions, to the first four Classes into which the Exhibition of 1851 was divided, viz. :—

CLASS I. MINING AND MINERAL PRODUCTS ;

II. CHEMICAL AND PHARMACEUTICAL PRODUCTS ;

III. SUBSTANCES USED AS FOOD ;

IV. VEGETABLE AND ANIMAL SUBSTANCES USED IN MANUFACTURES ; to which is added

XXVII. MANUFACTURES IN MINERAL SUBSTANCES,

it being scarcely found possible to separate that Class from Class I.

Circulars were addressed to the principal exhibitors of the United Kingdom, especially those who had been noticed by the Juries—stating the objects of the Commissioners, and leaving them full liberty to supply those samples which they considered most suitable to the purpose. The officers of the Commission were charged to abstain as much as possible from any duties of rejection or selection beyond that of addressing themselves only to manufacturers of known character; and Her Majesty's Commissioners are satisfied that this was a better course than attempting to choose the best

specimen of each kind of produce that could be procured in the United Kingdom.

The amount of information which this Catalogue contains is various, and depends upon what was furnished by the contributors. Reference is also made to the OFFICIAL DESCRIPTIVE AND ILLUSTRATED CATALOGUE of the Exhibition of 1851, and to the REPORTS OF THE JURIES, copies of which are added to the Collection. (*Tray L.*)

As it is, each contributor has been called upon to send such samples of the articles exhibited by him in 1851 as he considered most desirable should be known in foreign countries, and it is considered that such is the best criterion of their utility to the countries to which they are sent. In many cases the specimens, which have in all cases been furnished gratuitously, can have no reference to any commercial advantage; and in those the public spirit which induced the contributors to wish to take part in the undertaking will also doubtless prove a security for the specimens being good of their kind. On the whole, it is considered that, as far as the very limited extent of these collections will allow, they are a fair representation of the raw produce of the United Kingdom.

The following is a list of the countries to which these collections have been sent:—

AMERICA, UNITED STATES OF.	PORTUGAL.
AUSTRIA.	PRUSSIA.
BAVARIA.	RUSSIA.
BELGIUM.	SARDINIA.
DENMARK.	SAXONY.
EGYPT.	SPAIN.
FRANCE.	SWEDEN AND NORWAY.
FRANKFORT-ON-MAINE.	SWITZERLAND.
GREECE.	TUNIS.
GRAND DUCHY OF HESSE.	TURKEY.
HANOVER.	TUSCANY.
NETHERLANDS.	WURTEMBERG.

It is hoped that arrangements may be made to place these collections in such a situation as may allow of their being consulted by manufacturers and the public of the countries to which they are sent, and that they may be of some little practical use, but in any case they will be accepted both by the Government and the public of those countries as one more small mark of the good will of Her Majesty's Commissioners and the exhibitors of Great Britain to their friends and competitors in the Exhibition of the Works of Industry of all Nations of 1851.

By order of Her Majesty's Commissioners,

(Signed)

EDGAR A. BOWRING,

Secretary.

ALPHABETICAL LIST OF CONTRIBUTORS.

	PAGE		PAGE
Abbott & Wright - - -	23	Field, J. C. & J. - - -	27
Abercarn & Gwythen Collieries Com- pany - - -	4	Fordham, Thomas - - -	18
Adams, John - - -	29	Francis, Charles, & Sons - - -	30
ALBERT, H. R. H. PRINCE - - -	14	Garland, Thomas - - -	11
Ashburnham, Dowager Lady - - -	19	Gawkroger & Hynam - - -	6
Asprey, James - - -	18	Gibson, Charles - - -	18
Barrett, Captain - - -	6	Gilmour, A. & Co. - - -	4
Berger, Samuel & Co. - - -	21	Glass, George Michael - - -	20
Bethell, John - - -	32	Golding, Robert - - -	19
Bevington & Sons - - -	24	Grangemouth Coal Company - - -	34
Bexley, Lord - - -	18	Greaves, John W. - - -	33
Bowling Iron Company - - -	2	Greaves, R. - - -	30
Bramwell, Thomas - - -	12	Grey, John - - -	5
Breadalbane, the Marquis of - - -	34	Hahnel & Ellis - - -	12
Brockedon, W. - - -	11	Harrison, Ainslie & Co. - - -	6
Brown & Polson - - -	22	Hills, F. C. - - -	8
Brown, Robert - - -	33	Hird, Dawson, & Hardy - - -	1
Brotherton, W., & Co. - - -	23	Howards & Kent - - -	11
Buccleuch, the Duke of - - -	6	Illingworth, Alexander - - -	18
Buckley, Trustees of the late James - - -	12	Johnson, Cammell & Co. - - -	3
Burn, Robert - - -	21	Juson, W. - - -	18
Burnett, Sir W. - - -	8	King & Co. - - -	5
Byers, Joshua - - -	4	Lawson, Peter & Son - - -	14
Cahn, David - - -	27	Lee, Dr. John - - -	7
Cameron's Coalbrook Steam Coal Com- pany - - -	3	Lindsay, G. - - -	7
Champernowne, H. - - -	32	Lomas, John - - -	33
Chitty, Edward - - -	18	London and Penzance Serpentine Com- pany - - -	32
Clarke, The Executors of the late R. C. - - -	4	Luff, James - - -	34
Collins, Robert Nelson - - -	8	M'Garry & Sons - - -	22
Collinson, Charles - - -	7	M'Killican, James - - -	17
Colman, J. & J. - - -	22	Mannings, George - - -	29
Cox, J. - - -	23	Markwick, A. & Co. - - -	23
Croughton, William Peel - - -	17	Marshall, John - - -	28
Davis, D. - - -	4	Mason, George - - -	29
Davy, Edward - - -	29	May & Baker - - -	10
Devon Great Consolidated Copper Mining Company - - -	5	Mercer, John - - -	10
Dewar, Thomas - - -	21	Miller, Taverner John - - -	23
Dorrien, C. - - -	29		
Dufaville, W. - - -	21		

ALPHABETICAL LIST OF CONTRIBUTORS.

	PAGE		PAGE
Miller, Thomas & Co.	- 13	Sadler, William James	- 18
Miller, David & William	- 21	Scott, Langston	- 7
Millner, Robert	- 30	Sealy, John	- 33
Minton, Henry, & Co.	- 32	Seccombe, Samuel	- 3
Moberley, W.	- 12	Seyssel Asphalte Company	- 5
Monkland Iron & Steel Company	- 5	Simpson, Humphrey, & Vickers	- 20
Moore & Buckley	- 19	Skinner & Whalley	- 30
Morgan, Richard, & Sons	- 4	Smith, Benjamin, Thomas, & Charles	- 26
Naylor, Vickers, & Co.	- 2	Smith, Benjamin, & Son	- 26
Noak, W. & J.	- 20	Snowden, Robert	- 19
Patent Fuel Company	- 4	Society for Improving the Condition of the Labouring Classes	- 34
Payne, H.	- 17	Spence, Peter	- 7
Peake, Thomas	- 34	Squire, John & William	- 7
Penney, Henry	- 23	Squire, Peter	- 11
Pontifex & Wood	- 7	Stevens & Son	- 30
Preston & Co.	- 29	Sutton, John, & Son	- 18
Puckridge, Frederick	- 30	Taylor, John, & Sons	- 19
Ramsay, G. H.	- 4	Ulverston Mining Company	- 5
Raynbird, Hugh	- 17	Vivian & Sons	- 3
Raynbird, Robert	- 17	Watt, W. & Son	- 23
Rea, Edward	- 28	Welsh Slate Company	- 33
Rebow, J. G.	- 29	White, John Bazley & Sons	- 31
Relf, S.	- 7	Wilson, Sir Thomas Maryon	- 6
Richardson, Timothy, & Sons	- 19	Wolf, E. & Son	- 12
Ridgway, John, & Co.	- 34	Wood & Bedford	- 23
Rimmel, E.	- 8	Workman, John	- 34
Rose, William Anderson	- 27	Worthington, William	- 20
Rowe, Richard	- 5	Wotherspoon, Robert	- 22
Rowney, George, & Co.	- 12	Wrench, Jacob, & Sons	- 16
St. Etienne, Madame Daniele	- 22		

CATALOGUE OF SAMPLES OF RAW PRODUCE.

Tray A.—MINING AND MINERAL PRODUCTS.

No. 1 to No. 66.

HIRD, DAWSON, & HARDY, *Low Moor Iron Works, Bradford, Yorkshire, England.*

(For Prices of Metal see detailed List accompanying Specimens.)

- 1 Best Coal of the soft kind
 - 2 „ of the hard kind
- { These specimens of Coal lie from 60 to 100 yards below the surface, and are from 24 to 26 inches in thickness in the bed.
- 3 Coke made from the above.—This is prepared by burning the Coal in ovens or in rows on the ground, to purify it from sulphur and other matter which would be injurious to the Iron. It is used in the blast or smelting furnaces.
 - 4 Black Bed Coal.—This Coal lies from 40 to 42 yards above the Best or Better Bed Coal, and the bed is from 34 to 36 inches in thickness. Used for steam-engine boilers and house fires.
 - 5 Coke made from the above.—Used for lime-kilns, stoves for drying cores, for moulding castings, and other common purposes.
 - 6 Black Ironstone (two specimens).—This lies immediately above the Black Bed Coal, is found in six distinct strata, and forms a bed of 5 feet in thickness; the whole being embedded in shale. It contains about 28 per cent. metal, or 73 cwt. to produce 1 ton of metal.
 - 7 White Ironstone.—This lies 22 yards above the Black Bed Coal, and is found in seven strata, which compass 7 feet, and is embedded in shale, containing 28 per cent. metal, but is not so highly esteemed as the Black Stone.
 - 8 Burnt Ironstone (two specimens).—Prepared by roasting or burning in kilns or in heaps on the ground, to separate all injurious matter; it is then taken to the blast furnaces to be smelted.
 - 9 Limestone.—This is brought from Skipton, and is used in the furnaces as a flux for the Ironstone. Requires 22 cwt. for 1 ton of Iron.
 - 10 Pig Iron, best quality, or No. 1.—Used for small or intricate castings, being the softest metal.

- 11 Pig Iron, second quality, or No. 2.—Used for weighty castings, where strength is required.
- 12 Pig Iron, third quality, or No. 3.—Used for making Bar Iron and other forge purposes, and for large castings.
- 13 Scoria, or Dross.—Is composed of the argillaceous or earthy part of the Ironstone, combined with the Limestone, for which it has a strong affinity; and is used for making roads.
- 14 Refined Iron.—Prepared from No. 3, Pig Iron, by being exposed in small low furnaces to a powerful blast. These furnaces are called refineries; and the metal, when run into moulds, is in the second state of manufacture.
- 15 Dross from the Refinery.—Is the impure matter which runs from the refinery with the metal, but, being lighter, flows on the surface. It contains from 40 to 50 per cent. Iron, which may be extracted in the smelting furnaces by the addition of argillaceous matter.
- 16 Puddled Iron.—Is Iron in the next stage after refined metal, being in a semi-malleable state. After having been stirred in a furnace till it acquires a welding property, it is taken out and flattened under heavy hammers.
- 17 Dross from puddling furnace.
- 18 Finished Bar and Rod Iron (four specimens).
- 19 Boiler Plate (two specimens).
- 20 Knots, tied cold (four specimens).
- 21 Sample, tested by hydraulic pressure in a cold state. (For particulars of testing see label attached to specimen).

See *Official Catalogue*, CLASS XXII., No. 85, and
Reports of the Juries, p. 10.—PRIZE MEDAL.

THE BOWLING IRON COMPANY, *Bradford, Yorkshire, England.*

(For Prices of Metal see detailed List accompanying Specimens.)

- 22 Bed Coke.
- 23 Better Bed Coal.
- 24 Oven Coke.
- 25 Boiler-plate Cuttings.
- 26 Puddled Iron.
- 27 Iron Ore, calcined.
- 28 Iron Ore.
- 29 Tyre Bar Iron.
- 30 Refined Iron.
- 31 Pig Metal, No. 1.
- 32 Ditto No. 2.
- 33 Ditto No. 3.
- 34 Knot, tied cold.

See *Official Catalogue*, CLASS XXII., No. 83, and
Reports of the Juries, p. 10.—PRIZE MEDAL.

NAYLOR, VICKERS, & CO., *River Don Works, Sheffield, England.*

- 35 to 44 Mahogany Case, containing specimens of Cast Steel for saws, tools, &c., (wholesale prices, Cast Steel, $\frac{3}{8}$ in. to 2 in., 56l. per ton; Double Shear ditto, ditto; Coach Springs, 18l. to 22l. ditto.)

See *Official Catalogue*, CLASS XXII., No. 199, and
Reports of the Juries, p. 10.—PRIZE MEDAL.

JOHNSON, CAMELL, & CO., *Cyclop Steel Works, Sheffield, England.*

CASE CONTAINING NINE SPECIMENS OF CAST STEEL, viz.—

- 45 Best doubly carbonized and refined Cast Steel for chisels, (wholesale prices, Cast Steel, 52s. to 70s. per cwt ; Double Shear, 40s. to 65s. ditto ; Spring Steel, 20s. to 32s. ditto.)
- 46 Ditto ditto ditto for taps, (ditto, ditto.)
- 47 Highly carbonized double Shear Steel, warranted extra superior, (ditto, ditto.)
- 48 Best doubly carbonized and refined Cast Steel for tools, (ditto, ditto.)
- 49 Prepared elastic spring Steel, (ditto, ditto.)
- 50 Superior extra refined Cast Steel, for engineers' and machinists' tools, (do. do.)
- 51 Ditto ditto ditto ditto, (ditto, ditto.)
- 52 Ditto ditto ditto ditto, (ditto, ditto.)
- 53 Best doubly carbonized and refined Cast Steel, for chisels, (ditto, ditto.)

See *Official Catalogue*, CLASS XXII., No. 109, and
Reports of the Juries, p. 10.—PRIZE MEDAL.

SAMUEL SECCOMBE, *Phanix Mines, Liskeard, Cornwall, England.*

- 54 Tin Ore.
- 55 Copper Ore.

See *Official Catalogue*, CLASS I., No. 454.

VIVIAN & SONS, *Hafod Copper Works, Swansea, Wales.*

SERIES ILLUSTRATING COPPER-SMELTING.

- 56 Raw or uncalcined Ore.
- 57 Calcined Ore.
- 58 Raw Metal from ore furnace.
- 59 Slag from ore furnace.
- 60 Calcined ore-furnace Metal.
- 61 White Metal from melting.
- 62 Slag from ditto.
- 63 Blistered Copper.
- 64 Slag from ditto.
- 65 Refined Copper.
- 66 Slag from ditto.

See *Official Catalogue*, CLASS I., No. 473, and
Reports of the Juries, p. 12.—HONOURABLE MENTION.

Tray B.—MINING AND MINERAL PRODUCTS.
No. 67 to No. 99.

CAMERON'S COALBROOK STEAM COAL COMPANY, *London Offices, 2 Moor-gate-street, London, England.*

- 67 Smokeless steam Coal (of a quality intermediate between bituminous Coal and anthracite). From the mines near Loughor, in the county of Glamorgan South Wales.

See *Official Catalogue*, CLASS I., No. 39 (outside the Building.)

D. DAVIS, *Hirwain, near Merthyr Tydvil, Wales.*

68 The Blaengwaur Steam Coal, from Aberdare.

See *Official Catalogue*, CLASS I., No. 43 (outside the Building.)A. GILMOUR & CO., *Kilmarnock, Scotland.*

69 Steam Coal, from Hurlford and Skerrington Colliery, near Kilmarnock.

See *Official Catalogue*, CLASS I., No. 50 (outside the Building.)THE PATENT FUEL COMPANY, *15 St. Mary Axe, London, England.*

70 Warlich's Patent Fuel, (wholesale price, 14s. per ton, free on board at Swansea.)

See *Official Catalogue*, CLASS I., No. 230, and
Reports of the Juries, p. 12.—HONOURABLE MENTION.G. H. RAMSAY, *Derwent Haugh, Newcastle, England.*71 Cannel Coal. One ton of this Coal yields, on an average, 75,000 cubic feet
of gas.See *Official Catalogue*, CLASS I., No. 269.RICHARD MORGAN & SONS, *Llanelly, Wales.*

72 Stone Coal, or Anthracite, from Cwm Amman, Llanelly, Gelly Ceidrim.

73 Ditto ditto polished.

See *Official Catalogue*, CLASS I., No. 272.ABERCARN AND GWYTHEN COLLIERIES COMPANY, *Newport, Monmouthshire, Wales.*

74 The Gwythen Charcoal-vein Steam Coal.

See *Official Catalogue*, CLASS I., No. 430, and
Reports of the Juries, p. 9.—PRIZE MEDAL.THE EXECUTORS OF ROBERT COULDWELL CLARKE, *Old Silkstone Colliery, near Barnsley, Yorkshire, England.*

75 Iridescent or Peacock Coal.

See *Official Catalogue*, CLASS I., No. 266.JOSHUA BYERS, *Stockton-on-Tees, Durham, England.*

COLLECTION ILLUSTRATING THE MANUFACTURE OF LEAD.

76 Lead Ore.

77 Common Pig Lead.

78 Lead Pipe.

79 Sheet Lead (4 lbs. per foot superficial).

80 Litharge, 1st quality.

81 Ditto 2nd quality.

See *Official Catalogue*, CLASS I., No. 494, and
Reports of the Juries, p. 9.—PRIZE MEDAL.

MONKLAND IRON AND STEEL COMPANY (WILLIAM MURRAY), 33 *West George-street, Glasgow, Scotland.*

- 82 Iron Ore.
- 83 Malleable Iron.
- 84 Fire Clay.

See *Official Catalogue*, CLASS I., No. 426, and
Reports of the Juries, pp. 12, 13.—HONOURABLE MENTION.

RICHARD ROWE, *Laxey Glen, Douglas, Isle of Man.*

- 85 Blende Ore ; the produce of the Laxey Mines, in Laxey Glen, parish of Lonan, Isle of Man, (wholesale price, 2*l.* 10*s.* per ton.)
- 86 Silver Lead Ore ditto ditto (ditto, 25*l.* ditto, free on board.)

See *Official Catalogue*, CLASS I., No. 492.

DEVON GREAT CONSOLIDATED COPPER MINING COMPANY, *Tavistock, England.*

- 87 Copper Ore, (wholesale price, 6*l.* per ton.)

See *Official Catalogue*, CLASS I., No. 453.

JOHN GREY, *Dilston, Corbridge, England.*

- 88 Blende Ore, from Alston Moor, Cumberland.

See *Official Catalogue*, CLASS I., No. 506, and
Reports of the Juries, p. 12.—HONOURABLE MENTION.

ULVERSTON MINING COMPANY, *Stainton, England.*

- 89 Furness Iron Ore (hæmatite), produced from mines belonging to the Earl of Burlington, and used in Staffordshire, Yorkshire, and South Wales, for mixing with inferior Iron Ores.

See *Official Catalogue*, CLASS I., No. 420.

KING & CO., *Stourbridge, England.*

- 90 Fire Clay, in its raw state, used in the manufacture of Glass-House Pots: peculiar to the Stourbridge district. (Wholesale price 55*s.* per ton.)

See *Official Catalogue*, CLASS I., No. 91, and
Reports of the Juries, p. 11.—HONOURABLE MENTION.

SEYSSSEL ASPHALTE COMPANY, *Stangate, Westminster Bridge, London, England.*

RAW MATERIAL, AND VARIOUS APPLICATIONS OF ASPHALTE.

- 91 Rock Asphalte.
- 92 Ground ditto.
- 93 Mineral Tar.
- 94 Grit.
- 95 Asphalte for Roofing.
- 96 Ditto for Paving.

See *Official Catalogue*, CLASS I., No. 229, and
Reports of the Juries, p. 576.—PRIZE MEDAL.

HARRISON, AINSLIE, & CO., *Newland Furnace, Ulverstone, England.*

- 97 Hæmatite Iron Ore from Lindal Moor, in Furness, containing metallic iron 66·47 per cent. ; oxygen 28·50 per cent. ; silica 3·43 per cent. ; zinc ·71 ; moisture and loss ·89. (Wholesale price 12s. per ton.)

See *Official Catalogue*, CLASS I., No. 405.

HIS GRACE THE DUKE OF BUCCLEUCH, *Wanloch Lead Hills, Dumfriesshire, Scotland.*

- 98 Silver Lead Ore.

See *Official Catalogue*, CLASS I., No. 509, and *Reports of the Juries*, p. 8.—PRIZE MEDAL.

CAPTAIN BARRETT, *Coniston, near Kendal, Lancashire, England.*

- 99 Cobalt Ore from the Coniston Mines. (Wholesale price 50*l.* per ton.)

See *Official Catalogue*, CLASS I., No. 511.

Tray C.—MINERAL AND CHEMICAL PRODUCTS.
No. 100 to No. 179.

GAWKROGER & HYNAM, *7 Prince's Square, Finsbury, London, England.*

- | | | |
|---|--|--|
| 100 Yellow Fullers' Earth, second quality | } Used in the manu-
facture of cloth made
of animal fibre. | (Wholesale price
25s. to 38s. per
ton, according to
quality.) |
| 101 Drab ditto best quality | | |
| 102 Blue ditto third quality | | |

See *Official Catalogue*, CLASS I., No. 48.

SIR THOMAS MARYON WILSON, BART., *Charlton, Kent, England.*

- 103 Sand-stone for Foundations of Buildings.
104 White Sand for Glass-making.
105 Mild Blackfoot for Iron Castings.
106 Red Sand for Iron Castings.
107 Brass and Cock Founders' Sand.
108 Yellow Loam for Casting.
109 Iron Casting Sand.
110 Strong Brown Loam for Gas and other Furnaces.
111 Silver Casting Sand.
112 Brass Casting Sand.
113 Masons' Sand for Stone-sawing.
114 Coring Sand.
115 Strong Blackfoot for Iron Castings.

See *Official Catalogue*, CLASS I., No. 49.

JOHN & WILLIAM SQUIRE, *Yarmouth, Isle of Wight, Hampshire, England.*

116 Fine White Sand, used in the manufacture of best Flint Glass.

See *Official Catalogue*, CLASS I., No. 74.

CHARLES COLLINSON, *Mansfield, England.*

117 Red Casting Sand, used in the production of fine castings.

See *Official Catalogue*, CLASS I., No. 75.

S. RELF, *Reigate, Surrey, England.*

118 Silver Sand, from the Tunnel Caves at Reigate.

See *Official Catalogue*, CLASS I., No. 76.

G. LINDSAY, *Sunderland, England.*

119 Green Copperas, a proto-sulphate of iron, manufactured from iron pyrites procured from the coal-mines.

See *Official Catalogue*, CLASS II., No. 16, and

Reports of the Juries, p. 47.—HONOURABLE MENTION.

PETER SPENCE, *Pendleton Alum Works, Manchester, England.*

120 Iron Pyrites. Found in nodules of various sizes imbedded in the coal veins. Used for the manufacture of Sulphuric Acid, (wholesale price, 12s. per ton.)

121 Refuse, or Burnt Pyrites. The ashes or refuse of the coal pyrites. Used for the manufacture of copperas (proto-sulphate of iron).

122 Patent Zinc Cement, or Hydraulic Mortar. Made from the refuse lime of the gas-works and refuse shale after producing alum from the shale of the coal-measures, to which is added a small portion of sulphate of zinc, (wholesale price, 10s. to 12s. per barrel of 2½ cwt.)

See *Official Catalogue*, CLASS II., No. 7, and

Reports of the Juries, pp. 42, 49.—HONOURABLE MENTION.

JOHN LEE, LL.D. *Hartwell House, near Aylesbury, England.*

123 Sand for Glass-making, 1st quality, from a sandhill in the parish of Stone, near Aylesbury.

124 Ditto ditto, 2nd ditto.

125 Ditto ditto, 3rd ditto.

See *Official Catalogue*, CLASS I., No. 125, and

Reports of the Juries, p. 12.—HONOURABLE MENTION.

PONTIFEX & WOOD, *Shoe-lane, Fleet-street, London, England.*

126 White Carbonate of Lead. (Wholesale price 24l. per ton.)

See *Official Catalogue*, CLASS II., No. 1, and

Reports of the Juries, p. 48.—PRIZE MEDAL.

LANGSTON SCOTT, 41 *Moorgate-street, London, England.*

127 White Oxide of Zinc, produced by destructive distillation from zinc ore or spelter.

See *Official Catalogue*, CLASS II., No. 61, and

Reports of the Juries, p. 49.—PRIZE MEDAL.

SIR W. BURNETT, M.D., K.C.B., F.R.S., *Cannon-street, London, England.*

- 128 Disinfecting Fluid, a deodorizing and purifying agent. (Wholesale price, in jars containing 14 Imperial quarts, 14s.)

See *Official Catalogue*, CLASS IV., No. 7.

ROBERT NELSON COLLINS, *Oxford-court, Cannon-street, London, England.*

- 129 Disinfecting Powder for the removal of offensive smells.

See *Official Catalogue*, CLASS II., No. 109, and
Reports of the Juries, p. 44.

F. C. HILLS, *Deptford, Kent, England.*

- 130 Sal Ammoniac, sublimed from rough muriate of ammonia, made from the ammoniacal liquid produced at gas-works by the addition of muriatic acid, (wholesale price, 42s. per cwt.)

- 131 Carbonate of Ammonia, sublimed from rough sesqui-carbonate of ammonia, made by the decomposition of sulphate of ammonia by carbonate of lime, the ammonia being produced at gas-works, (ditto, 56s. per cwt.)

See *Official Catalogue*, CLASS II., No. 23, and
Reports of the Juries, p. 46.—PRIZE MEDAL.

E. RIMMEL, 39 *Gerrard-street, Soho, London, England.*

SIMPLE EXTRACTS OF FLOWERS.

- 132 Extract of Jasmine, (wholesale price, 12s. per lb.)
133 Ditto of Rose, (ditto, ditto.)
134 Ditto of Lily of the Valley, (ditto, ditto.)
135 Ditto of Geranium Rosæ, (ditto, ditto.)
136 Ditto of Sweet Pea, (ditto, ditto.)
137 Ditto of Magnolia, (ditto, ditto.)

BRITISH ESSENTIAL OILS.

- 138 Essential Oil of Carraways, (ditto, ditto.)
139 Ditto of Peppermint, (ditto, 38s. ditto.)
140 Ditto of Lavender, (ditto, 36s. ditto.)
141 Ditto of Bitter Almonds, (ditto, 24s. ditto.)

COMPOUND EXTRACTS OR BOUQUETS.

- 142 Ess. Bouquet, (ditto, 16s. ditto.)
143 Jockey Club ditto, (ditto, ditto.)
144 Jenny Lind ditto, (ditto, ditto.)
145 Balmoral ditto, (ditto, ditto.)
146 Victoria ditto, (ditto, ditto.)
147 Prince Albert ditto, (ditto, ditto.)

ESSENTIAL OILS FROM BRITISH INDIA.

- 148 Ol. Verbena, or Lemon Grass, (ditto, 12s. ditto.)
149 Ol. Geranium, or Ginger Grass, (ditto, ditto.)
150 Ol. Citronella, (ditto, 14s. ditto.)
151 Ol. Cassia, (ditto, 12s. ditto.)

DISTILLED PERFUMES.

- 152 Eau de Cologne, (wholesale price, 3s. per lb.)
 153 Honey Water (Aqua Mellis), (ditto, 5s. ditto.)
 154 Lavender Water, (ditto, 4s. ditto.)
 155 Perfumed Extract of Lavender, (ditto, 4s. ditto.)
 156 Toilet Vinegar, (ditto, 4s. ditto.)
 157 Odontalgic Elixir, (ditto, 5s. ditto.)

ARTIFICIAL FRUIT ESSENCES.

- 158 Essence of Jargonelle Pear, (ditto, 24s. ditto.)
 159 Ditto of Pine Apple, (ditto, 36s. ditto.)
 160 Ditto of Apple, (ditto, 36s. ditto.)
 161 Ditto of Raspberry, (ditto, 36s. ditto.)

CHEMICAL PREPARATIONS.

- 162 Instantaneous Hair Dye (No. 1), (ditto, 12s. ditto.)
 163 Ditto ditto (No. 2), (ditto, 12s. ditto.)
 164 Aromatic Vinegar, (ditto, 16s. ditto.)
 165 Preston Salts, (ditto, 8s. ditto.)
 166 Permanent Ink for marking linen, (ditto, 24s. ditto.)
 167 Detergent, for removing spots from silks, &c., (ditto, 3s. ditto.)

HOUSEHOLD SOAPS.

- 168 Curd Soap, (ditto, 38s. per cwt.)
 169 Yellow ditto, 1st quality, (ditto, 36s. ditto.)
 170 Ditto ditto, 2nd ditto, (ditto, 32s. ditto.)
 171 Palm Oil Soap (ditto, 36s. ditto.)
 172 Bleached ditto, 34s. ditto.)
 173 Mottled ditto, (ditto, 38s. ditto.)

TOILET SOAPS.

- 174 Brown Windsor Soap, (ditto, 70s. ditto.)
 175 White ditto ditto, (ditto, 72s. ditto.)
 176 Honey ditto, (ditto, 76s. ditto.)
 177 Almond and Honey ditto, (ditto, 76s. ditto.)
 178 Malaktikon ditto, for shaving, (ditto, 156s. ditto.)
 179 Shaving Cream (a Pearl-ash Soap), (ditto, 224s. ditto.)

See *Official Catalogue*, CLASS XXIX., No. 3, and
Reports of the Juries, p. 615.—HONOURABLE MENTION.

Tray D.—CHEMICAL PRODUCTS. No. 180 to No. 283.

J. MERCER, *Oakenshaw, near Accrington, Lancashire, England.*

- 180 Caustic Soda, of suitable strength and temperature, whereby the fibres of cotton become contracted and filled, converting thin and coarse cloth into strong and fine, at the same time giving greatly increased and improved powers of receiving colours in printing and dyeing, and also in making them more permanent.

SPECIMENS OF COTTON CLOTH PREPARED BY THE ABOVE.

- 181 Sample of Cotton, made fine and strong.
- 182 Gummed Cloth soda'd, printed with what are called Spirit Colours, viz., logwood or Brazil liquor (rather strong), mixed with bichloride of tin thickened with gum; after printing and hanging a day, is then simply washed.
- 183 Printed with gum-water before being put in the soda; where the gum is, the action of the soda is prevented.
- 184 Steam Work, a soda'd and unsoda'd fent stitched together, and the printing with the same colour going over each.
- 185 Part of each fent put into soda at 1.225 specific gravity for 1 or 2 minutes, washed and rinsed through diluted sulphuric acid; washed again, then dried. That containing woollen is cotton warp, cotton and woollen weft alternately. Where the cotton is it contracts; the wool not contracting, it is obliged to bend and pucker.
- 186 Madder Work. A prepared (soda'd) and unprepared (soda'd) fent stitched together, and the printing common to both.
- 187 Gummed and soda'd, washed, and then dipped once in a blue vat.
- 188 Gummed, then prepared, then steeped in dilute Stannate of soda, afterwards dyed in peachwood.
- 189 Gummed first, then soda'd, &c., steeped in dilute solution of catechu; the darker one is darkened by steeping afterwards in a dilute solution of bichrome potass.
- 190 Striped with gum first, then soda'd and washed, then steeped in a weak solution of fustic. The darker is afterwards mordanted by steeping in dilute pyrolignite of iron.
- 191 A piece of common garancine work, done by Hargreaves', Accrington, in soda'd cloth. It will be observed the cloth is almost as strong as linen.
- 192 Part of the cloth soda'd, then dipped in dilute logwood liquor, then in dilute pyrolignite of iron.

See *Official Catalogue*, CLASS XVIII., No. 48, and
Reports of the Juries, pp. 69, 94, 347, 459.—COUNCIL MEDAL and PRIZE MEDAL.

MAY & BAKER, *Manufacturing Chemists, Battersea, Surrey, England.*

- 193 Precipitated Chalk, (wholesale price, 40s. per cwt.)
- 194 Ponderous Carbonate of Magnesia, (ditto, 13d. per lb.)
- 195 Sulphate of Zinc, (ditto, 3d. per lb.)
- 196 Oxide of Zinc, (ditto, 15d. per lb.)
- 197 Acetate of Zinc, (ditto, 3s. per lb.)

- 198 White Precipitate of Mercury, (wholesale price, 3s. 3d. per lb.)
 199 Red Precipitate of Mercury, (ditto, 3s. 3d. per lb.)
 200 Prepared Calomel, (ditto, 3s. 1d. per lb.)
 201 Corrosive Sublimate, (ditto, 2s. 2d. per lb.)
 202 Antimon. Potassio Tart. (Emetic Tartar), (ditto, 1s. 1d. per lb.)
 203 Pulv. Antimon. Comp. (Antimonial Powder), (ditto, 1s. 1d. per lb.)
 204 Nitrate of Bismuth, (ditto 4s. 6d. per lb.)

See *Official Catalogue*, CLASS II., No. 14, and
Reports of the Juries, p. 47.—PRIZE MEDAL.

HOWARDS & KENT, *Stratford, Essex, England.*

- 205 Bicarbonate of Soda.
 206 Bicarbonate of Potash.
 207 Refined Camphor.
 208 Citric Acid.
 209 Pure Sulphate of Zinc.
 210 Tartaric Acid.
 211 Pure Sulphate of Iron.
 212 Rochelle Salt.
 213 Sulphate of Quinine.
 214 Refined Borax.

See *Official Catalogue*, CLASS II., No. 11, and
Reports of the Juries, p. 46.—PRIZE MEDAL.

PETER SQUIRE, 277, *Oxford Street, London, England.*

- 215 Solution of Permanganate of Potash.
 216 Liquor Taraxaci, or fluid extract of *Taraxacum Dens-Leonis*.
 217 Solution of the Bi-Meconate of Morphia, of the same strength as Laudanum.

See *Official Catalogue*, CLASS II., No. 93, and
Reports of the Juries, p. 49.—PRIZE MEDAL.

THOMAS GARLAND, *Fairfield, Redruth, Cornwall, England.*

- 218 Impure Oxide of Arsenic, obtained from tin ores (containing arsenical pyrites)
 by calcination.
 219 Purified Oxide of Arsenic.
 220 Ditto, ditto, a finer quality
 221 Lump Arsenic, obtained from the preceding by sublimation in close retorts.

See *Official Catalogue*, CLASS I., No. 488, and
Reports of the Juries, p. 13.—HONOURABLE MENTION.

W. BROCKEDON, 29 *Devonshire-street, Queen-square, London, England.*

- 222 Native Cumberland Lead, in raw state.
 223 Cumberland Lead, purified and condensed into blocks by a pressure of
 5,000 tons, (wholesale price, 30s. per lb.)

See *Official Catalogue*, CLASS I., No. 65, and
Reports of the Juries, pp. 3, 450.—COUNCIL MEDAL.

E. WOLFF & SON, *Church-street, Spitalfields, London, England.*

(For Prices see detailed List accompanying Specimens.)

- 224 Native Cumberland Lead, in raw state.
 225 Cumberland Lead, purified and condensed into blocks. (Wholesale price, 20s. per lb.) Pencils manufactured from ditto.
 226 Creta Lævis Pencils, a newly invented permanent coloured chalk, which cannot be obliterated by rubbing, (wholesale price, 36s. per gross; Lakes, Cobalt, and Ultramarine, 72s. ditto, without cases.)

227 Frame showing the gradations of tints of the Creta Lævis Pencils.

See *Official Catalogue*, CLASS I., No. 68, and CLASS XXX., No. 129, and
Reports of the Juries, p. 450.—HONOURABLE MENTION.

THOMAS BRAMWELL, *Heworth Chemical Works, Newcastle-upon-Tyne, England.*

- 228 Red Prussiate of Potash, (wholesale price, 2s. per lb.)
 229 Yellow ditto, (ditto, 13d. ditto.)

See *Official Catalogue*, CLASS II., No. 27, and
Reports of the Juries, p. 39, 40, 41, 44.—PRIZE MEDAL.

HAHNEL & ELLIS, 9 *Sugar-lane, Manchester, England.*

- 230 Sulphate of Copper, (wholesale price, 46l. per ton.)
 231 Nitrate of Lead.

See *Official Catalogue*, CLASS II., No. 10, and
Reports of the Juries, p. 45.—PRIZE MEDAL.

W. MOBERLEY, *Mulgrave Alum Works, Sands End, near Whitby, Yorkshire, England.*

- 232 Crystallised Alum, (wholesale price, 9l. 10s. to 10l. per ton.)

See *Official Catalogue*, CLASS II., No. 17, and
Reports of the Juries, p. 47.—PRIZE MEDAL.

THE TRUSTEES OF THE LATE JAMES BUCKLEY, *Manchester, England.*

- 233 Sulphate of Iron, (wholesale price, 2l. 15s. per ton.)

See *Official Catalogue*, CLASS II., No. 4, and
Reports of the Juries, p. 44.—HONOURABLE MENTION.

GEORGE ROWNEY & CO., 51 *Rathbone-place, Oxford-street, London, England.*

SPECIMENS OF COLOURS PRODUCED OR MANUFACTURED IN ENGLAND FOR THE USE OF ARTISTS.

- 234 Flake White, in Oil.
 235 Chrome, No. 3, ditto.
 236 Permanent Crimson Lake, ditto.
 237 Brown Pink, ditto.
 238 Prussian Blue, ditto.
 239 Red Lead, Moist Wafer.
 240 Carmine, $\frac{1}{4}$ cake.
 241 Violet Carmine, ditto.
 242 Gallstone, ditto.
 243 Purple Madder, ditto.
 244 Burnt Carmine, ditto.
 245 Deep Rose, ditto.
 246 Madder Brown, $\frac{1}{2}$ cake.

- 247 Crimson Lake, $\frac{1}{2}$ cake.
 248 Lemon Yellow, ditto.
 249 Extract of Madder Carmine, ditto.
 250 Pure Scarlet, ditto.
 251 Scarlet Lake, ditto.
 252 Lamp Black, Cake.
 253 Vermilion, ditto.
 254 Lemon Chrome, ditto.
 255 Permanent White, ditto.
 256 Scarlet Vermilion, ditto.
 257 Bistre, Moist Colour.
 258 Italian Pink, ditto.
 259 Chrome, No. 2, ditto.
 260 Prussian Blue, ditto.
 261 Light Red, ditto.
 262 Ivory Black, in Oil
 263 Verdigris, ditto.
 264 Madder Lake, moist colour in tube.
 265 Chrome, No. 4, in Oil.
 266 Yellow Ochre, ditto.
 267 Emerald Green, Moist Wafer.
 268 Carmine, unprepared.
 269 Ditto, in Oil.
 270 Prussian Blue, unprepared.
 271 Ditto, in Oil.
 272 Violet Carmine, unprepared.
 273 Ditto in Oil
 274 Pure Scarlet, unprepared.
 275 Ditto in Oil.
 276 Verdigris, unprepared.
 277 Ditto in Oil.

See *Official Catalogue*, CLASS XXX., No. 3, and
Reports of the Juries, p. 48.—HONOURABLE MENTION.

THOMAS MILLER & CO., 56, Long Acre, London, England, Inventors and
 Manufacturers.

SILICA OR FLINT PAINTS.

(For Prices see detailed List accompanying Specimens.)

- | | |
|----------------------|--|
| 278 Deep Silica Blue | } Silica Pigments are the most unchangeable and indestructible colours which an artist can use. Many of the paintings found in the Egyptian catacombs, and in the houses at Nineveh and Pompeii are of this nature, retaining their freshness, though 3,000 years old. |
| 279 Ditto Red | |
| 280 Ditto Yellow | |
| 281 Ditto Orange | |
| 282 Ditto Purple | |
| 283 Ditto Green | |

See *Official Catalogue*, CLASS XXX., No. 1, and
Reports of the Juries, p. 47.—HONOURABLE MENTION.

Tray E.—AGRICULTURAL PRODUCTS. No. 284 to No. 340.

H. R. H. PRINCE ALBERT.

SAMPLES OF GRAIN GROWN ON THE ROYAL FARM AT WINDSOR—

284 White Chidham Wheat.

285 Winter Oats.

286 Augusta Horse-beans.

See *Official Catalogue*, CLASS III., No. 107, and
Reports of the Juries, pp. 52, 54.—PRIZE MEDAL.PETER LAWSON & SON, *Edinburgh, Scotland.*

SAMPLES OF GRAIN GROWN IN SCOTLAND.

- 287 Sandy Oat—A variety deservedly in repute in Scotland, very hard and prolific; produces a heavy crop of straw, and ripens very regularly.
- 288 Old Black Scotch Oats—Formerly much cultivated in all parts of Scotland; but, from a prejudice as to colour more than any real defect as to quality, is getting into disrepute.
- 289 Winter Dun Oat—Although this variety has proved very hardy when grown in Scotland, its cultivation is principally confined to the southern and midland sheep counties of England.
- 290 Black Tartarian Oat—One of our earliest oats, and well adapted for high and rather inferior light soils. Very prolific, and is deservedly in repute for feeding horses.
- 291 Scotch Berlie Oat—The straw of this variety is said to be preferred by cattle to that of any other variety. Well adapted for light early soils, is very prolific, not easily shaken, and meals well.
- 292 Early Siberian Oat—This is the earliest of our oats, ripening fully a fortnight before the potato variety, both hardy and prolific, and its cultivation rapidly extending.
- 293 Potato Oat—The most extensively cultivated variety in Scotland. Straw rather short, and grain very white and well filled.
- 294 Hopetoun Oat—After the potato oat, this is the most extensively cultivated in Scotland. For growing on poor, late moorish, or newly reclaimed land, no kind is better adapted.
- 295 Scotch Bere or Bigg—Cultivated chiefly in the Highlands of Scotland, and on exposed inferior light soils in the Lowlands.
- 296 Annat Barley—A favourite and very superior variety. Ripens early, and produces a good bulk of straw.
- 297 Chevalier Barley—In general cultivation in the best agricultural districts of Scotland. Samples grown in England are, however, much superior in quality to that of Scottish growth.
- 298 Peruvian Barley—A very superior six-rowed naked barley.
- 299 Hopetoun Wheat—This wheat, an improved early sub-variety of Hunter's, is a great favourite with growers in Scotland.
- 300 Talavera Wheat—This variety is of Spanish origin, and was at one time very extensively grown in the best cultivated districts of Scotland. It is generally supposed to be too tender to withstand a severe winter; and its cultivation has been neglected. It ripens much earlier than any of our other wheats.
- 301 Red Chaff Pearl Wheat—A very prolific variety, the cultivation of which is rapidly extending. Similar in quality to the celebrated Uxbridge wheat.

- 302 White Essex Wheat—This variety, although highly esteemed by the English millers, is not very extensively cultivated in Scotland, being supposed not sufficiently hardy for the climate.
- 303 Hunter's Wheat—The most extensively cultivated of any of the wheats in Scotland, and is both hardy and prolific.
- 304 Fenton Wheat—A very hardy, prolific variety, extensively grown in the Lothians, and other well-cultivated districts.
- 305 Red Fern Wheat—A valuable spring wheat, though liable to smut, and apt to shake if allowed to stand until quite ripe; known also as April wheat.
- 306 Golden Drop Wheat—Very prolific, but like all the red wheats, not much liked by the millers.
- 307 Red Lammas Wheat—The most esteemed variety of the red wheats, cultivated in Scotland. It is grown also in the north of France with great success.
- 308 Spalding's Wheat—A variety extensively cultivated in Scotland. Very hardy, prolific, and of vigorous growth.
- 309 Clovers' Red Wheat—A favourite variety of the red wheats, grown very extensively in the midland counties of England, and rapidly superseding other red wheats in Scotland. The straw is rather thick and strong, and of more than average length.
- 310 Common or Winter Rye—Only cultivated in Scotland, on poor moorish soils, in elevated districts, and on inferior dry soils in other places.
- 311 Scotch Tare—Grown in Scotland, principally as green food for cattle, though occasionally for the ripe seed.
- 312 Hopetoun Tare—The cultivation of this is rapidly extending in Scotland. Compared with other varieties, its produce, both in straw and seed, is double.
- 313 Scottish Perennial Rye Grass—Principally employed for sowing on lands which are subjected to rotations of cropping. There are many sub-varieties of a perennial character, which enter largely into mixture of grass seeds for permanent pastures.
- 314 Italian Rye Grass—Compared with other varieties of rye grass, this affords a stronger braird, arrives sooner at maturity, has a greater abundance of foliage, grows considerably taller, and is much preferred by cattle.
- 315 Auvergne Pea—An esteemed variety, growing from four to five feet high; very prolific, and distinguished by the pods being recurved.
- 316 Milford's Marrowfat Pea—Very prolific, and of superior quality. Grows from three to four feet in height.
- 317 Tall Marrowfat Pea—This is a tall growing, and very prolific pea, often from six to seven feet in height; and is much esteemed by growers.
- 318 Dwarf Imperial Pea—This variety is adapted for growing either in the field or garden. Usual height from two to three feet.
- 319 Maple or Partridge Field Pea—Generally reckoned the most suitable variety for growing in late situations, from its combining the properties of being very early, prolific, and of excellent quality.
- 320 Common Scottish Field Bean—This is almost the only sort cultivated in Scotland; grows from three to five feet in height, and is not very prolific.
- 321 Small Winter Field Bean—This is merely a sub-variety of the common winter bean, distinguishable by the comparative smallness of the seed.
- 322 Common Winter Field Bean—This variety cannot be said to have met with a fair trial in Scotland, an opinion being prevalent that it will not withstand the severity of our winter.

- 323 Purple Top Swedish Turnip—Held in great esteem by the generality of cultivators. There are many sub-varieties, which have been obtained by judicious selection of the roots, from which the seed stock has been saved.
- 324 Purple Top Yellow Globe Turnip—An old and very esteemed variety, and, in comparison with those commonly cultivated, is considered to come nearest the Swedes in hardness and solidity of texture.
- 325 Yellow Tankard Turnip—A valuable acquisition to the varieties of Tankard; arrives early at maturity, and yields a bulky crop.
- 326 Chevalier Barley—This sample was grown by the Marquis of Tweeddale, on his farm at Yester, near Haddington, at an elevation of 750 feet, and is merely shown as indicative of the beneficial results of trench or deep ploughing on thin moorish soil.
- 327 Hunter's Wheat—This sample was grown by the Marquis of Tweeddale, on his farm at Yester, near Haddington, at an elevation of 750 feet, and is merely shown as indicative of the beneficial results of trench or deep ploughing on thin moorish soil.
- 328 Hopetoun Wheat—This sample was grown by the Marquis of Tweeddale, on his farm at Yester, near Haddington, at an elevation of 750 feet, and is merely shown as indicative of the beneficial results of trench or deep ploughing on thin moorish soil.
- 329 Tweeddale Wheat—A variety of Hunter's, remarkably well-suited for the highest wheat districts of Scotland. The present sample was grown by the Marquis of Tweeddale, at an elevation of 750 feet above the level of the sea.

See *Official Catalogue*, CLASS III., No. 105, and
Reports of the Juries, pp. 51, 54.—COUNCIL MEDAL.

JACOB WRENCH & SONS, *London Bridge, London, England.*

- 330 Spalding Wheat.
- 331 Fullard's Tick Beans.
- 332 Kent Rye.
- 333 Poland Oats.
- 334 Clovers' Wheat.
- 335 Hoary rough-chaffed, or Velvet Wheat.
- 336 Canary Seed.
- 337 Black Tartarian Oats.
- 338 Red Lammas Wheat.
- 339 White Chaff Red Wheat.
- 340 Golden Drop Wheat.

(Continued in Tray F.)

Tray F.—AGRICULTURAL PRODUCTS. No. 341 to No. 398.

JACOB WRENCH & SONS, *London Bridge, London, England*—(continued.)

- 341 Winter Tares.
- 342 Chidham Wheat.
- 343 Sandy Oats.
- 344 Flax Seed.

- 345 Hunter's Wheat.
- 346 April Spring Wheat.
- 347 Breton Wheat.
- 348 Potato Oats.
- 349 Chevalier Barley.
- 350 Talavera Wheat.
- 351 Maple Peas.
- 352 Rape Seed.
- 353 Taunton Dean Wheat.
- 354 Hopetoun Oats.
- 355 Early Mazagan Beans.
- 356 Early Birley Oats.
- 357 Naked Barley.
- 358 Wellington White Wheat.
- 359 Trefoil Seed.
- 360 Red Kent Oats.
- 361 Old England Beans.
- 362 Red Clover.
- 363 Fullard's Blood-red Wheat.
- 364 Trefolium Incarnatum.
- 365 Fenton Wheat.
- 366 Black Barley.

See *Official Catalogue*, CLASS III., No. 80.

JAMES M'KILLICAN, *Piperhill, Cawdor, Scotland.*

- 367 White Wheat—The produce of the first crop from land formerly worthless, manured by 300 lbs. weight of Peruvian Guano to the acre.

See *Official Catalogue*, CLASS III., No. 114, and
Reports of the Juries, p. 52.—PRIZE MEDAL.

HUGH RAYNBIRD, *Laverstock, Andover Road, Hampshire, England.*

- 368 Hybridized Wheat.

See *Official Catalogue*, CLASS III., No. 74, and
Reports of the Juries, p. 51.—PRIZE MEDAL.

ROBERT RAYNBIRD, *Hengrave, near Bury St. Edmunds, Suffolk, England.*

- 369 Chevalier Barley—Grown at Hengrave, Suffolk.
- 370 Kessingland Wheat—Grown upon a light soil at Hengrave, Suffolk.

See *Official Catalogue*, CLASS III., No. 73.

H. PAYNE, *Birdbrook Moat, near Halstead, Essex, England.*

- 371 Revitt Wheat.

See *Official Catalogue*, CLASS III., No. 82, and
Reports of the Juries, p. 52.—PRIZE MEDAL.

WILLIAM PEEL CROUGHTON, *Tenterden, Kent, England.*

- 372 Light Golden Pod Beans.
- 373 Dark ditto.

See *Official Catalogue*, CLASS III., No. 92, and
Reports of the Juries, p. 54.—HONOURABLE MENTION.

JAMES ASPREY, *Sandleford, near Newbury, Berkshire, England.*

374 White Trump Wheat—Grown on a very poor soil.

See *Official Catalogue*, CLASS III., No. 93.

THOMAS FORDHAM, *Snelsmore Hill East, near Newbury, Berkshire, England.*

375 Hybridized White Wheat, (weight, 66½ lbs. per bushel.)

376 Prolific Beans, (ditto, 70 lbs. ditto.)

See *Official Catalogue*, CLASS III., No. 94.

LORD BEXLEY, *Footscray, Kent, England.*

377 White Chittim Wheat.

See *Official Catalogue*, CLASS III., No. 100.

CHARLES GIBSON, *Pitlochry, Perth, Scotland.*

378 Gibson's English Barley—Grown near Pitlochry, about 600 feet above the level of the sea.

See *Official Catalogue*, CLASS III., No. 102, and
Reports of the Juries, p. 52.—HONOURABLE MENTION.

WILLIAM JAMES SADLER, *Swindon, Wiltshire, England.*

379 Lawrence's White Prolixus Crystal Wheat, (weight, 66½ lbs. to the bushel.)

See *Official Catalogue*, CLASS III., No. 103A.

JOHN SUTTON & SONS, *Reading, Berkshire, England.*

380 Skinless Chevalier Barley; a new variety.

See *Official Catalogue*, CLASS III., 112, and
Reports of the Juries, p. 52.—HONOURABLE MENTION.

EDWARD CHITTY, *Guildford, Surrey, England.*

381 Best White Flour.

See *Official Catalogue*, CLASS III., No. 159, and
Reports of the Juries, p. 54.—PRIZE MEDAL.

W. JUSON, *Red Hill, Shrewsbury, Shropshire, England.*

382 Fine White Flour.

See *Official Catalogue*, CLASS III., No. 95, and
Reports of the Juries, p. 54.—HONOURABLE MENTION.

ALEXANDER ILLINGWORTH, *Banchory Ternan, Scotland.*

383 English Barley, (weight, 59½ lbs. to the bushel.)

384 Scotch Birley Oats, (ditto, 44 lbs. ditto.)

385 Perennial Rye-grass Seed, (ditto, 30½ lbs. ditto.)

See *Official Catalogue*, CLASS III., No. 115.

JOHN TAYLOR & SON, *Bishop Stortford, Herts, England.*

VARIETIES OF MALT, viz. :—

386 Amber, used in brewing ordinary ales and porter.

387 Coloured, used for same purpose.

388 White, used in brewing pale ale.

389 Brown, used in brewing porter to give it flavour and colour.

See *Official Catalogue*, CLASS III., No. 77, and
Reports of the Juries, p. 52.—HONOURABLE MENTION.

TIMOTHY RICHARDSON & SONS, 6, *Duke-street, Southwark, London, England.*

390 Jones's Hops, grown in various parts both of Kent and Sussex.

See *Official Catalogue*, CLASS III., No. 59, and
Reports of the Juries, p. 56.—PRIZE MEDAL.

THE DOWAGER LADY JULIANA ASHBURNHAM, *Broomham, near Hastings, Sussex, England.*

391 Hops grown within three miles of the sea, in the parish of Guestling, Sussex.

See *Official Catalogue*, CLASS III., No. 60.

ROBERT GOLDING, *Hunton, Maidstone, Kent, England.*

392 Mid-Kent Hops.

See *Official Catalogue*, CLASS III., No. 63, and
Reports of the Juries, p. 56.—HONOURABLE MENTION.

ROBERT SNOWDEN, *City-road, London, England.*

393 Sample of the Whole Berry Coffee, roasted in patent enamelled cylinders.

394 Specimen of the Crushed Berry, showing the woody fibre, which is removed before grinding by patent process.

395 Sample of the Woody Fibre removed from the heart of the coffee-berry, which by the ordinary process is ground up with the coffee.

396 Sample of Patent Purified Coffee Nibs, ready for grinding.

See *Official Catalogue*, CLASS III., No. 28, and
Reports of the Juries, p. 58.—PRIZE MEDAL.

MOORE & BUCKLEY, 4 *Upper East Smithfield, London, England.*

397 Concentrated Preserved Milk, (wholesale price, pints 29s. per dozen, half-pints 15s. ditto, in tins.)

398 Chocolate and Milk Paste, (wholesale price, pints 24s. per dozen, half-pints 12s. ditto, in tins.)

See *Official Catalogue*, CLASS III., No. 139, and
Reports of the Juries, p. 65.—PRIZE MEDAL.

Tray G.—SUBSTANCES USED AS FOOD, AND VEGETABLE
AND ANIMAL SUBSTANCES. No. 399 to No. 450.

WILLIAM WORTHINGTON, *Northwich, Cheshire, England.*

- 399 Rock Salt. Exported to be refined for domestic purposes, or for the use of cattle in its natural state, (wholesale price, from 8s. to 12s. per ton.)
400 Butter Salt. Generally used for salting butter, (ditto, 13s. 6d. ditto.)
401 Extra Coarse Common Salt, unstoved. Used principally for salting fish and provisions, (ditto, 14s. ditto.)
402 Common Salt, unstoved. Used for general purposes, and in England by the bleachers, potters, and for various chemical purposes, (ditto, 12s. ditto.)
403 Bay Salt, stove-dried. Used for packing fish and ship's provisions, and for various other purposes dispensed through the leading chemists, (do., 55s. do.)
404 Middle Grain Salt, stove-dried. Used for salting meat and cheese, (do., 17s. do.)
405 Flaky Salt. Much esteemed for table use, (ditto, 20s. ditto.)
406 Fine Table Salt. For table use and domestic purposes, (ditto, 17s. ditto.)
407 Fine Salt, ditto ditto.

See *Official Catalogue*, CLASS I., No. 57, and
Reports of the Juries, p. 13.

W. & J. NOAK, *Covercroft Salt Works, Droitwich, Worcestershire, England.*

- 408 Brine from the Salt Springs at Droitwich. The strength of the liquid varies from 30 to 42 per cent. of salt.
409 Bay Salt. An article principally supplied to druggists, and used in small quantities for domestic purposes, (wholesale price, 50s. per ton.)
410 Hopper or Malden Salt. Used for dessert as a substitute for olives, (do., 50s. do.)
411 Coarse Broad Salt. Exported for the fisheries, (ditto, 9s. ditto.)
412 Brisk Salt. Used for chemical purposes, fisheries, and exportation, (do., 8s. do.)
413 Lymington Grained Salt. Used for curing bacon and butter, and for exportation, (ditto, 10s. ditto.)
414 Fine Table Salt, stove-dried in lumps of about 35 lb. each. Used for table and domestic purposes, (ditto, 16s. ditto.)
415 Agricultural Salt. If used in light soils is a most valuable fertiliser. It is used very extensively in the manufacture of artificial manure.

See *Official Catalogue*, CLASS III., No. 118.

SIMPSON, HUMPHREY, & VICKERS, 23, *Little Britain, London, England.*

- 416 Isinglass, uncut.
417 Ditto, cut by machinery.

See *Official Catalogue*, CLASS IV., No. 117, and
Reports of the Juries, p. 67.—PRIZE MEDAL.

GEORGE MICHAEL GLASS, *Brandon-street, Walworth, London, England.*

- 418 White Animal Gelatine, 1st quality, (wholesale price, 6s. per lb.)
419 Ditto, 2nd ditto, (ditto, 4s. per lb.)

- 420 White Animal Gelatine, 3rd quality, (wholesale price, 2s. per lb.)
 421 Gelatine Voice Lozenges, (ditto, 1s. per lb.)

See *Official Catalogue*, CLASS III., No. 141, and
Reports of the Juries, p. 165.—HONOURABLE MENTION.

W. DUFAVILLE, *Broughton House, Islington, London, England.*

- 422 Crystallized Fish Gelatine, (wholesale price, 5s. per lb.)
 423 Machine-cut British Fish Isinglass, (ditto, 8s. per lb.)
 424 Hand-cut, ditto ditto, (ditto, 8s. per lb.)
 425 Calf Gelatine, 1st quality, (ditto, 2s. 6d. per lb.)
 426 Ditto, 2nd ditto, (ditto, 1s. 4d. per lb.)

See *Official Catalogue*, CLASS IV., No. 125, and
Reports of the Juries, p. 165.—HONOURABLE MENTION.

THOMAS DEWAR, *Newcastle-upon-Tyne, England.*

- 427 White Mustard Seed.
 428 White Mustard from ditto, (wholesale price, 8d. per lb.)
 429 Brown Mustard Seed.
 430 Brown Mustard from ditto, (ditto, 1s. 4d. per lb.)

See *Official Catalogue*, CLASS III., No. 119, and
Reports of the Juries, p. 62.—HONOURABLE MENTION.

SAMUEL BERGER, & Co., *Bromley, Middlesex, England.*

- 431 White Patent Rice Starch, (wholesale price, 31l. 9s. per ton. Price fluctuating.)
 432 Blue, ditto ditto.

See *Official Catalogue*, CLASS III., No. 130, and
Reports of the Juries, p. 77.—PRIZE MEDAL.

ROBERT BURN, *North Merchiston House, Edinburgh, Scotland.*

- 433 Cotton Seed Oil, (wholesale price, 1s. 9d. per gallon.)
 434 Cotton Seed Oil-cake, (ditto, 5l. per ton.)

See *Official Catalogue*, CLASS III., No. 68, and
Reports of the Juries, pp. 55, 79, 80.—PRIZE MEDAL and HONOURABLE MENTION.

DAVID & WILLIAM MILLER, *Musselburgh, near Edinburgh, Scotland*

- 435 Household White Starch. Manufactured from the finest home-grown wheat; requires boiling for household purposes, (wholesale price, 36l. per ton.)
 436 Bleacher's Wheaten ditto. Manufactured from the finest home-grown wheat, for bleaching purposes only, and is free of acid or alkali, and washed with pure water, (ditto, 32l. per ton.)
 437 Royal Patent ditto. Manufactured from the finest home-grown wheat, and is used by laundresses and others for the getting-up of linens. It requires no boiling, (ditto, 42l. per ton.)
 438 Royal Blue ditto. Manufactured from the finest home-grown wheat, and requires to be boiled. Used chiefly for household purposes, (ditto, 38l. per ton.)
 439 Sago Flour ditto. Manufactured from sago flour, and is found best adapted for dressing lace and other light textures, (ditto, 36l. per ton.)
 440 Scotch Farina. No. 1. Made from sound potatoes grown in the Lothians. It is chemically bleached, and is used by confectioners, (ditto, 24l. per ton.)

441 Scotch Farina. No. 2. Made from sound potatoes grown in the Lothians. It is washed only with pure water, no acid or alkali, and is used for bleaching, and by gum manufacturers, paper-hangers, confectioners, and power-loom manufacturers, also for soup and food. It is perfectly free from sand, (wholesale price, 22*l.* per ton.)

442 Pithina Food. Manufactured from the finest sago flour, imported from Singapore, with the addition of gluten and other farinaceous substances, (ditto, 40*l.* per ton.)

See *Official Catalogue*, CLASS III., No. 127, and
Reports of the Juries, pp. 54, 77.—HONOURABLE MENTION.

BROWN & POLSON, *Thruschraig, near Paisley, Scotland.*

443 Patent Starch manufactured from Wheat, (wholesale price, 38*l.* per ton.)

444 Powder Starch manufactured from Sago, (ditto, 36*l.* per ton.)

445 Farina (Pulverised) manufactured from diseased Potatoes, (ditto, 22*l.* per ton.)

See *Official Catalogue*, CLASS III., No. 123, and
Reports of the Juries, p. 77.—HONOURABLE MENTION.

McGARRY & SONS, *Palmerstown and Ashtown Mills, Dublin, Ireland.*

446 Refined Rape Oil, (wholesale price, 36*l.* 10*s.* per ton.)

447 Linseed Oil, (ditto, 29*l.* per ton.)

448 Linseed Cake, (ditto, 8*l.* per ton.)

449 Rape ditto, (ditto, 4*l.* 10*s.* per ton.)

See *Official Catalogue*, CLASS III., No. 132, and
Reports of the Juries, p. 80.

MADAME DANIELE ST. ETIENNE, *Haberton Ford, Totness, England.*

450 Preparation of Potato for Puddings, Soups, &c., (wholesale price, 5*d.* per lb.)

See *Official Catalogue*, CLASS III., No. 138, and
Reports of the Juries, p. 54.

Tray H.—VEGETABLE AND ANIMAL SUBSTANCES.

No. 451 to No. 564.

J. & J. COLMAN, *Cannon-street, City, London, England.*

451 Cake Blue, 1st quality

452 Lump ditto, 2nd ditto.

453 Blue Satin Glaze Wheat Starch.

454 Ditto ditto Rice ditto

455 White Wheat ditto

456 British Gum, 1st quality.

457 Ditto, 2nd ditto.

458 Mustard.

See *Official Catalogue*, CLASS III., No. 117, and
Reports of the Juries, p. 77.—PRIZE MEDAL.

ROBERT WOTHERSPOON, *Glenfield Starch Works, Maxwellton, near Paisley, Scotland.*

459 Glenfield Patent Powder Starch—Manufactured from Sago, (wholesale price, 42*s.* per cwt.)

See *Official Catalogue*, CLASS III., No. 124, and
Reports of the Juries, p. 77.—HONOURABLE MENTION.

J. COX, *Gorgie Mills, Edinburgh, Scotland.*

- 460 Superfine Sparkling Gelatine, (wholesale price, 3s. per lb.)
 461 Superfine Long Scotch Glue, (ditto, 4l. per cwt.)
 462 Long Scotch Glue, (ditto, 50s. per cwt.)

See *Official Catalogue*, CLASS XXIX., No. 68.

WOOD & BEDFORD, *Leeds, England.*

- 463 Blue Cudbear, (wholesale price, 9d. per lb.)
 464 Red ditto, (ditto, 9d. per lb.)
 465 Orchil Paste, (ditto, 35s. per cwt.)
 466 Blue Liquid Orchil, (ditto, 35s. per cwt.)
 467 Red ditto, (ditto, 50s. per cwt.)
 468 Liquid Ammonia (fortissim.), specific gravity 88°, (ditto, 6d. per lb.)

See *Official Catalogue*, CLASS II., No. 47, and

Reports of the Juries, pp. 50, 88.—PRIZE MEDAL and HONOURABLE MENTION.

WILLIAM BROTHERTON & Co., *North-street, Wandsworth, near London, England.*

- 469 British Rape Seed.
 470 Raw Rape Seed Oil. (Wholesale price, 38l. per ton of 248 gallons, each gallon weighing 9 lbs. English.)
 471 Purified ditto (ditto ditto ditto.)

See *Official Catalogue*, CLASS IV., No. 23, and

Reports of the Juries, p. 80.—HONOURABLE MENTION.

TAVERNER JOHN MILLER, *Dorset Wharf, Westminster, London, England.*

- 472 Refined Spermaceti, (wholesale price, 1s. 6d. per lb.)

See *Official Catalogue*, CLASS IV., No. 29, and

Reports of the Juries, p. 629.—PRIZE MEDAL.

HENRY PENNEY, 4, *York-place, Baker-street, London, England.*

- 473 Pure Bleached Linseed Oil, (wholesale price, 42s. per gallon.)
 474 Pure Copal Varnish, (ditto, 26s. per gallon.)
 475 Black Japan, (ditto, 20s. per gallon.)
 476 Pale Gold Size, (ditto, 16s. per gallon.)

See *Official Catalogue*, CLASS IV., No. 64, and

Reports of the Juries, p. 80.

A. MARKWICK & Co., 28, *Martin's-lane, Cannon-street, London, England.*

- 477 Patent Epithem—1st. } For applying heated fluids to the surface of the body,
 478 Patent Epithem—2nd. } in lieu of poultices and fomentations.

See *Official Catalogue*, CLASS IV., No. 114, and

Reports of the Juries, p. 165.—PRIZE MEDAL.

W. WATT & SON, *Dumfries, Scotland.*

- 479 Glue, made from the refuse pieces of hides and skins; principally used by cabinet-makers and joiners.

See *Official Catalogue*, CLASS IV., No. 120, and

Reports of the Juries, p. 165.—HONOURABLE MENTION.

ABBOTT & WRIGHT, *Needham Market, Suffolk, England.*

- 480 Crown Glue, manufactured from the hides and feet of cattle, (wholesale price, 45l. per ton, subject to fluctuation.)

See *Official Catalogue*, CLASS IV., No. 121.

BEVINGTON & SONS, *Neckinger Mills, Bermondsey, London, England.*

MATERIALS USED IN ENGLAND FOR TANNING AND DRESSING HIDES AND SKINS:—

MATERIALS USED FOR TANNING SOLE LEATHER, AND THE UPPER LEATHER OF MEN'S BOOTS.

- | | |
|------------------------|--|
| 481 English Oak Bark | } All these Tanning Materials are first ground or pounded, then soaked in water, and the solution used as a bath, in which the hides or skins are immersed for periods varying from one week to one year, according to the thickness of hide to be tanned. |
| 482 Valonia - - | |
| 483 Terra Japonica - - | |
| 484 Myrambolans - - | |
| 485 Divi Divi - - | |

MATERIAL USED FOR TANNING MOROCCO LEATHER.

- 486 Ground Sumach—This material is procured from Sicily. It is the leaf of the plant *Rhus corearia*. It gives out its tanning quality best when soaked in warm water, and the solution is capable of tanning goat skins, sheep skins, or calf skins, to which it is usually applied, in course of 48 hours.

MATERIALS USED FOR DRESSING WHITE LEATHER, WHICH IS MOSTLY APPLIED FOR GLOVING LEATHER.

- | | |
|-------------|--|
| 487 Alum | } These materials are used in about equal proportions of each, mixed with warm water to the consistency of a thin paste. Kid and lamb skins well beaten or trampled in this mixture are made good leather in one hour. |
| 488 Salt | |
| 489 Flour | |
| Yolk of Egg | |

N.B. The yolk of egg is not comprised in this collection of tanning materials, on account of its tendency to rapid decay.

MATERIALS USED FOR DRESSING CHAMOIS LEATHER, SOMETIMES CALLED OIL LEATHER.

- | | |
|-------------|--|
| 490 Cod Oil | } Cod Oil is smeared on the surface of skins, which are afterwards well beaten in a fulling mill and partially dried. After this process has been gone through six or eight times, the skins are placed in heaps to acquire the heat of natural fermentation, and the process is completed by well washing in a strong solution of Potash. |
| 491 Potash | |

MATERIALS USED FOR MAKING VELLUM AND PARCHMENT.

- | | |
|-------------|---|
| 492 Lime | } After sheep-skins have been steeped in lime for three weeks, they are strained in a frame; frequently washed with hot water, and plastered with whiting to extract the grease. The process of manufacturing parchment is completed by drying, and smoothing the surface with a round knife. |
| 493 Whiting | |

MATERIALS USED IN PREPARING FURRIERS' SKINS.

- | | |
|-----------------------|--|
| Salt Butter | } Furriers' leather is made in England by well trampling skins with salt butter in a tub, closed at the top to retain the warmth of the feet. A second and third trampling in saw-dust (usually mahogany saw-dust) is necessary to cleanse the skins thoroughly of superfluous grease. |
| 494 Mahogany Saw Dust | |

N.B. Salt Butter is not comprised in this collection, on account of its rancidity.

SPECIMENS OF LEATHER PREPARED BY THE ABOVE PROCESSES.

- 495 Sumach Tanned Goat Skin, (wholesale price, 40s., 60s., 80s. per dozen.)
 496 Ditto Sheep Skin, (ditto, 15s., 24s., 32s. ditto.)
 497 Ditto Split Sheep Skin, (12s., 18s., 24s. ditto.)

- 498 Sumach Tanned Calf Skin, (wholesale price, 30s., 40s., 50s. per dozen.)
 499 Ditto Cape Sheep Skin, (18s., 24s., 36s. ditto.)
 500 Bark Tanned Persian Goat, (ditto, 12s., 18s., 24s. ditto.)
 501 Ditto Bazil, (ditto, 12s., 18s., 24s. ditto.)
 502 Curried Seal Skin, (ditto, 40s. 50s., 60s. ditto.)
 503 Ditto Calf Skin (ditto, 2s., 2s. 6d., 3s. per lb.)
 504 Black-Grained Persian Goat, (ditto, 18s., 24s., 30s. per dozen.)
 505 Ditto Seal Skin, (ditto, 50s., 60s., 70s. ditto.)
 506 Ditto Calf Skin, (ditto, 40s., 50s., 60s. ditto.)
 507 Striped Seal Skin Binder, (ditto, 36s., 48s., 54s. ditto.)
 508 Striped Cape Sheep Binder, (ditto, 18s., 24s., 30s. ditto.)
 509 Striped Persian Goat Binder, (ditto, 12s., 18s., 24s. ditto.)
 510 Enamelled Seal Skin for Shoes (ditto, 48s., 60s., 70s. ditto.)
 511 Patent Varnished Calf Skin, (ditto, 48s., 60s., 72s. ditto.)
 512 Enamelled Cow Hide, (ditto, 30s., 40s., 50s. per hide.)
 513 Red Morocco Leather, (ditto, 60s., 90s., 120s. per dozen.)
 514 Crimson Morocco, (ditto, 60s., 90s., 120s. ditto.)
 515 Drab ditto, (ditto, 60s., 90s., 120s. ditto.)
 516 Brown ditto, (ditto, 54s., 84s., 114s. ditto.)
 517 Violet ditto, (ditto, 54s., 84s., 114s. ditto.)
 518 Brown hard-grained Morocco, (ditto, 66s., 90s., 120s. ditto.)
 519 Red Cape Sheep, (ditto, 40s., 50s., 60s. ditto.)
 520 Green ditto, (ditto, 34s., 44s., 54s. ditto.)
 521 Cream ditto, (ditto, 36s., 42s., 48s. ditto.)
 522 Marone Roan, (ditto, 36s., 44s. ditto.)
 523 Rose Roan, (ditto, 26s., 32s., 40s. ditto.)
 524 Green Roan, (ditto, 26s., 32s., 40s. ditto.)
 525 Marone Persian Goat, (ditto, 24s., 30s., 36s. ditto.)
 526 Violet ditto, (ditto, 24s., 30s., 36s. ditto.)
 527 Rose ditto, (ditto, 24s., 30s., 36s. ditto.)
 528 Green ditto, (ditto, 24s., 30s., 36s. ditto.)
 529 Cream Calf, (ditto, 50s., 60s., 70s. ditto.)
 530 Green Skiver, (ditto, 20s., 28s., 36s. ditto.)
 531 Cream ditto, (ditto, 22s., 28s., 34s. ditto.)
 532 Red ditto, (ditto, 28s., 34s., 40s.)
 533 Black ditto, (ditto, 20s., 28s., 36s. ditto.)
 534 White Cape Strain, (ditto, 12s., 18s., 30s. ditto.)
 535 White Kid, for masonic aprons, (ditto, 30s., 42s., 48s. ditto.)
 536 Black Kid, for shoes, (ditto, 30s., 36s., 42s. ditto.)
 537 Black Kid Calf, for shoes and gloves, (ditto, 48s., 60s., 66s., ditto.)
 538 Black Glazed Kid Calf, (ditto, 42s., 48s., 60s. ditto.)
 539 Coloured Kid Calf, (ditto, 42s., 48s., 60s. ditto.)
 540 Tan Cape Sheep, for gloves, (ditto, 30s., 36s., 48s. ditto.)
 541 Tan Sheep, for gaiters, (ditto, 24s., 30s., 36s. ditto.)
 542 Chamois Sheep Leather, (ditto, 9s., 12s., 18s. ditto.)
 543 Chamois Lamb Leather, bleached, (ditto, 12s., 15s., 18s. ditto.)

- 544 Chamois Doe Skin, (wholesale price, 108s., 120s., 144s. per dozen.)
 545 Parchment, for deeds, (ditto, 10s., 15s., 20s. ditto.)
 546 Vellum, for painting and binding, (ditto, 36s., 44s., 50s. ditto.)
 547 Parchment, for gunpowder sieves, (ditto, 42s., 48s., 54s. ditto.)
 548 Brown Sheep Skin Rug, (ditto, 60s., 90s., 120. ditto.)
 549 Orange ditto ditto, (ditto, 60s., 90s., 120s.)

See *Official Catalogue*, CLASS XVI., No. 1, and
Reports of the Juries, pp. 92, 392.—HONOURABLE MENTION.

BENJAMIN, THOMAS, & CHARLES SMITH, 12 Church-street, Mile-end New
 Town, London, England.

- 550 Oxalic Acid, (wholesale price, 10½d. per lb.)
 551 Sal Acetos Sella (Oxalate of Potash), (ditto, 13d. ditto.)
 552 Emerald Green, (ditto, 10d. ditto.)
 553 Chinese Red, (ditto, 60s. per cwt.)
 554 Best Chrome Yellow, (ditto, 9d. per lb.)
 555 Best Middle Chrome Yellow, (ditto, 9d. ditto.)
 556 Best Pale Chrome Yellow, (ditto, 9d. ditto.)
 557 Zinc Yellow, (ditto, 1s. 6d. ditto.)
 558 Best Brunswick Green, (ditto, 42s. per cwt.)
 559 Best Middle Brunswick Green, (ditto, 42s. ditto.)
 560 Best Pale Brunswick Green, (ditto, 42s. ditto.)
 561 Deep Brunswick Green, 3rd quality, (ditto, 12s. per cwt.)
 562 Middle ditto ditto, (ditto, 12s. ditto.)
 563 Pale ditto ditto, (ditto, 12s. ditto.)
 564 Celestial Blue, (ditto, 36s. ditto.)

See *Official Catalogue*, CLASS IV., No. 65.

Tray I.—VEGETABLE AND ANIMAL SUBSTANCES.

No. 565 to No. 621.

BENJAMIN SMITH & SON, 14 Corbet-court, Spitalfields, London, England.

SAMPLES OF LICHENS, FROM WHICH ARCHIL AND CUDBEAR ARE PRODUCED.

- 565 Orchilla Weed, from Angola, Coast of Africa.
 566 Ditto, from Lima, South America.
 567 Ditto, from Mauritius.
 568 Ditto, from Canary Islands.
 569 Rock Moss, from ditto.
 570 Pustulatus ditto, from Norway.
 571 Velutus ditto ditto.

DYES PRODUCED FROM THE ABOVE.

- 572 Blue Archil with the weed in it, as taken from the steeping-back; used for
 dyeing Silk and Leather, (wholesale price, 35s. per cwt.)
 573 Red ditto ditto ditto (ditto, 35s. ditto.) *zumbeufan: f. 11.*

- 574 Red Archil Liquor, concentrated for printers; used for printing on Silk, Woollen, &c., (wholesale price, 70s. per cwt.)
- 575 Purple ditto ditto ditto (ditto, 70s. ditto.)
- 576 Red Archil Paste; used for dyeing Silk, Wool, and Woollens, (ditto, 25s. ditto.)
- 577 Blue ditto ditto ditto (ditto, 25s. ditto.)
- 578 Cudbear from Angola Weed ditto (ditto, 9d. per lb.)
- 579 Ditto from Lima Weed ditto (ditto, 6d. ditto.)

See *Official Catalogue*, CLASS IV., No. 68, and
Reports of the Juries, p. 88.—PRIZE MEDAL.

DAVID CAHN, 16 *Wilson-street, Finsbury, London, England.*

- 580 Ivory Black, 1st quality, for copper-plate, lithographic, and letter-press printers, &c. &c.
- 581 Ditto 2nd quality ditto ditto
- 582 Ditto 3rd quality ditto ditto

See *Official Catalogue*, CLASS XVII., No. 65, and
Reports of the Juries, p. 166.—HONOURABLE MENTION.

J. C. & J. FIELD, 12 *Wigmore-street, Cavendish-square, and 36 Upper Marsh, Lambeth, London, England.*

- 583 Stearine produced entirely from Tallow.

See *Official Catalogue*, CLASS IV., No. 130, and
Reports of the Juries, pp. 624, 628.—PRIZE MEDAL.

WILLIAM ANDERSON ROSE, 66 *Upper Thames-street, London, England.*

DUPLICATES OF PAINTING MATERIALS USED IN THE DECORATION OF THE GREAT EXHIBITION BUILDING.

- 584 Genuine Dry White Lead, (wholesale price, 32s. per cwt.)
- 585 Ditto Ground ditto, (ditto, 33s. ditto.)
- 586 Dry White Zinc, (ditto, 30s. ditto.)
- 587 Ground ditto, (ditto, 32s. ditto.)
- 588 Ditto Chrome Yellow, (ditto, 1s. per lb.)
- 589 Ultramarine Blue, (ditto, 1s. 10d. ditto.)
- 590 Vermilion, (ditto, 5s. ditto.)
- 591 Maroon Red, (ditto, 6d. ditto.)
- 592 Raw Linseed Oil, (ditto, 2s. 10d. per gallon.)
- 593 Refined ditto, (ditto, 3s. 1d. ditto.)
- 594 Boiled ditto, (ditto, 3s. 2d. ditto.)
- 595 Wood Stain, (ditto, 9s. ditto.)
- 596 Varnish for Wood Stained, (ditto, 12s. ditto.)
- 597 Clarified Machinery Oil; as supplied to railways, cotton-mills, &c. (ditto, 3s. 6d. ditto.)
- 598 Ditto Burning Oil; for lighthouses, railway signal-lamps, and domestic lamps, (ditto, 3s. 6d. ditto.)
- 599 Neat's-foot Oil; as supplied to the Admiralty and Ordnance, (ditto, 5s. ditto.)
- 600 Patent Black; for the preservation of ironwork, ordnance, and other purposes, (ditto, 3s. ditto.)

- 601 Refined Vegetable Oil; for lubricating purposes, (wholesale price, 1s. 3d. per gallon.)
- 602 Palm Oil Grease; for railway passenger trains exclusively, where there is a very great velocity, (ditto, 24s. cwt.)
- 603 Antioxide Paint. This Paint is made in every colour, for preservation of iron, wood, or cement; it is extensively used for iron roofing, girders, wire-work, suspension bridge chains, &c., (ditto, 32s. cwt.)
- ~~604 Creosote; supplied to Government Works for the protection of timber from dry-rot and decay, (ditto, 6s. per gallon.)~~

VARNISHES FOR CARRIAGE-BUILDING PURPOSES.

- 605 Polishing Body Varnish, (wholesale price, 24s. per gallon.)
- 606 Ditto Copal ditto, (ditto, 20s. ditto.)
- 607 Ditto Carriage ditto, (ditto, 18s. ditto.)
- 608 Oak Varnish, (ditto, 12s. ditto.)
- 609 Black Japan ditto, (ditto, 18s. ditto.)
- 610 Japanners' Gold Size, (ditto, 10s. ditto.)
- 611 Polishing Black Lacquer, (ditto, 7s. ditto.)
- 612 Liquid Grease. Made for the Government Harbour Works at Holyhead, Portland, &c., where the trucks of stone have to run down inclined planes, at medium speed, also for mining purposes, (ditto, 1s. 4d. ditto.)
- 613 White Grease; for railway contractors' earth waggons, mining purposes, heavy shafts and machinery, where there is slow motion carrying heavy weights, (ditto, 12s. cwt.)

See *Official Catalogue*, CLASS IV., No. 27, and
Reports of the Juries, p. 80.

EDWARD REA, 117 *Wardour-street*, London, England.

- 614 Ruby Seed Lac.
- 615 Orange ditto.
- 616 Shell Lac Garnet.
- 617 Lump Dragons' Blood.
- 618 Gum Thus or Frankincense.
- 619 Gum Animi.
- 620 Gum Damar.
- 621 Canada Balsam.

See *Official Catalogue*, CLASS IV., No. 116, and
Reports of the Juries, p. 72.—PRIZE MEDAL.

Tray K.—VEGETABLE AND ANIMAL SUBSTANCES.

No. 622 to No. 651.

JOHN MARSHALL, *Leeds*, England.

- 622 Red Turmeric, (wholesale price, 16s. per cwt.)
- 623 Red Orchil Liquor, (ditto, 50s. ditto.)
- 624 Blue, ditto, (ditto, 35s. ditto.)
- 625 Red Orchil Paste, (ditto, 30s. ditto.)
- 626 Blue, ditto, (ditto, 35s. ditto.)

627 Extract Indigo, (Acid or Neutral), (wholesale price, 7d. per lb.)

628 Ditto, Fine Carmine, (ditto, 1s. 2d. ditto.)

629 Ground Lac-dye, G., (ditto, 2s. 1d. ditto.)

630 Ditto, L., (ditto, 2s. 7d. ditto.)

631 Ditto, D., (ditto, 1s. 3d. ditto.)

632 Finest Persian Red Cudbear, (ditto, 1s. ditto.)

633 Fine Red ditto, (ditto, 8d. ditto.)

634 Finest Violet ditto, (ditto, 1s. ditto.)

See *Official Catalogue*, CLASS II., No. 68, and
Reports of the Juries, pp. 47, 88.—HONOURABLE MENTION.

GEORGE MASON, *Yately, Hartford Bridge, Hants, England.*

635 Flax, 1st quality.

636 Ditto 2nd ditto.

See *Official Catalogue*, CLASS IV., No. 54, and
Reports of the Juries, p. 98.—HONOURABLE MENTION.

PRESTON & CO. (ROYAL BELFAST FLAX IMPROVEMENT SOCIETY), *Belfast, Ireland*

637 Prepared Flax, (wholesale price, 70l. per ton.)

See *Official Catalogue*, CLASS IV., No. 106, and
Reports of the Juries, p. 97.—PRIZE MEDAL.

JOHN ADAMS, *Ballyderrit, Coleraine, Ireland.*

638 Flax grown in Ireland.

See *Official Catalogue*, CLASS IV., No. 49, and
Reports of the Juries, p. 97.—PRIZE MEDAL.

EDWARD DAVY, *The Parks, Crediton, Devon, England.*

CARDED FLAX PREPARED FROM FLAX STRAW UNSTEEPED, UNRETTED, OR
UNSTEAMED.

639 1st Quality.

640 2nd Ditto.

641 3rd Ditto.

See *Official Catalogue*, CLASS IV., No. 106.

GEORGE MANNINGS, *Wedhampton, near Devizes, Wiltshire, England.*

642 Diamond Clothing Wool from Southdown fleeces, the produce of the County of
Wilts.

See *Official Catalogue*, CLASS IV., No. 86.

J. G. REBOW, *Wivenhoe Park, near Colchester, Essex, England.*

643 Southdown sheep's wool.

See *Official Catalogue*, CLASS IV., No. 84, and
Reports of the Juries, p. 159.—PRIZE MEDAL.

C. DORRIEN, *Sennicots, near Chichester, Sussex, England.*

644 Merino Wool, produced from two-year-old sheep, sufficiently long and fine
for shawl manufacture.

See *Official Catalogue*, CLASS IV., No. 81, and
Reports of the Juries, p. 159.—PRIZE MEDAL.

ROBERT MILLNER, *Dublin, Ireland.*

645 Fleece of Wether, grown in the County Meath, Ireland.

646 Fleece of Hogget, grown in the County Wicklow, Ireland.

See *Official Catalogue*, CLASS IV., No. 85, and
Reports of the Juries, p. 159.—PRIZE MEDAL.

FREDERICK PUCKRIDGE, 5 & 6 *Kingsland Place, Kingsland, London, England.*

647 Goldbeater's Skin. Used by Gold Beaters to beat out leaves of gold for gilding.

648 Gold Cloth. Applicable to cabinet and upholstery work, head-dresses, millinery, &c. &c. Free from the effects of damp or tarnish, (wholesale price, 27s. per yard, 18 inches wide.)

649 Silver Cloth ditto ditto ditto (ditto, 13s. 6d. ditto.)

650 Flexible Gold ditto ditto ditto.

651 Flexible Silver ditto ditto ditto.

See *Official Catalogue*, CLASS IV., No. 108, and
Reports of the Juries, p. 165.—HONOURABLE MENTION.

Tray L.—MANUFACTURES IN MINERAL SUBSTANCES,
No. 652 to No. 687.

SKINNER & WHALLEY, *Stockton-on-Tees, Durham, England.*

652 White Marble Patent Paste, for mosaics, street designations, house numbers, &c. &c., (wholesale price, 40s. per ton.)

See *Official Catalogue*, CLASS XXVII., No. 121, and
Reports of the Juries, p. 587.—PRIZE MEDAL.

R. GREAVES, *Warwick, England.*

653 Blue Lias Cement, (wholesale price, 1s. per bushel.)

654 Portland ditto, (ditto, 1s. 6d. ditto.)

655 Roman ditto, (ditto, 1s. ditto.)

656 Blue Lias Stone used in the manufacture of cement.

See *Official Catalogue*, CLASS I., No. 7. (Outside the Building.)

CHARLES FRANCIS & SONS, *Nine Elms, Vauxhall, London, England.*

657 Parian Cement, soft state, (wholesale price, 27s. per barrel superfine, 17s. ditto coarse quality.)

658 Ditto, hard state.

See *Official Catalogue*, CLASS XXVII., No. 47, and
Reports of the Juries, p. 575.—PRIZE MEDAL.

STEVENS & SON, 186 *Drury Lane, London, England.*

659 Martin's Cement, soft state, 1st quality.

660 Ditto hard state, ditto. Unpolished White.

~~661 Ditto ditto ditto Polished ditto~~

662 Ditto ditto ditto ditto Coloured.

663 Ditto ditto ditto ditto ditto.

664 Ditto soft state, 2nd quality.

665 Ditto hard ditto.

See *Official Catalogue*, CLASS XXVII., No. 24, and
Reports of the Juries, p. 575.—PRIZE MEDAL.

JOHN BAZLEY WHITE & SONS, *Millbank-street, Westminster, London, England.*

- | | | |
|---|---|--|
| <p>666 Portland Cement, soft state,
(wholesale price, 3<i>l.</i> per
ton, including packages.)</p> <p>667 Ditto hard state,</p> | } | <p>CHARACTER.—Artificial product, made from the same materials that exist in the natural cement-stones, but combined in different proportions.</p> <p>COMPOSITION.—Lime about 75 per cent., Clay about 25 per cent.</p> <p>PROPERTIES.—When mixed with sand, sets slowly in air, and still more so under water. Gradually attains a hardness equal to stone, is not affected by frost, even in the coldest climate and does not vegetate or turn green.</p> <p>USES.—Employed as mortar for brick-work, and as concrete or beton, with rubble-stone and gravel; also as stucco, requires no colouring, but resembles stone. Employed for casting figures, tazzas, &c.</p> |
| <p>668 Roman Cement, soft state,
(wholesale price, Harwich,
2<i>l.</i> 17<i>s.</i> 6<i>d.</i> per ton, in-
cluding packages.)</p> <p>669 Ditto hard state -</p> | } | <p>CHARACTER.—Natural product, made from argillo-calcareous nodules, found in the London clay beds of Sheppy (Kent), and Harwich (Essex), also in the Kimmeridge and Oxford clays.</p> <p>COMPOSITION.—<i>Harwich</i> contains lime and clay in nearly equal proportions; <i>Sheppy</i>, lime, 70 per cent., clay, 30 per cent.</p> <p>PROPERTIES.—Sets quickly both in the air and under water, and soon attains its maximum of hardness, is easily affected by frost, and is liable to vegetate.</p> <p>USES.—Employed as mortar for brickwork with sand, also as stucco, in which case it requires to be coloured or painted, to disguise the natural colour of the cement.</p> |
| <p>670 Atkinson's Cement, soft
state, (wholesale price,
5<i>l.</i> 10<i>s.</i> per ton, including
packages.)</p> <p>671 Ditto hard state -</p> | } | <p>CHARACTER.—Natural product, made from argillo-calcareous stone, found in bands in the lias formations at Whitby (Yorkshire.)</p> <p>COMPOSITION.—Contains lime about 64 per cent., clay 36 per cent.</p> <p>PROPERTIES.—Sets quickly in air and under water, attains greater hardness than ordinary Roman Cement, is less affected by frost, and not so liable to vegetate.</p> <p>USES.—Employed as an external stucco, without colouring, but is principally used for running mouldings and casting ornaments.</p> |

672 Keene's Cement, soft state,
1st quality, (wholesale
price, 10*l.* per ton, in-
cluding packages.)

673 Ditto, hard state, ditto

674 Ditto, soft state, 2nd quality
(wholesale price, 5*l.* per
ton, including packages.)

675 Ditto, hard state, ditto

CHARACTER.—Artificial compound, made from sulphate of lime, chemically combined with sulphate of alumina.

PROPERTIES.—Sets slowly, but attains great eventual hardness; fitted only for in-door purposes; does not resist frost, and is not hydraulic.

USES, 1st QUALITY.—Employed to imitate marble for decorative purposes; takes a high polish; combines readily with colours; and from its superior hardness has a transparent effect, not produceable by plaster scagliola; is well adapted for inlaid pavements, after the manner of Florentine mosaic.

USES, 2ND QUALITY.—Employed as an internal stucco with sand, it becomes extremely hard, and may be painted on immediately; used for skirtings, architraves, and other mouldings instead of wood; also for internal paving in lieu of stone, either plain or inlaid. Never used as a mortar.

See *Official Catalogue*, CLASS I., No. 130, and
Reports of the Juries, p. 575.—PRIZE MEDAL.

JOHN BETHELL, 8 *Parliament-street*, Westminster, London, England.

676 Scotch Fir, unprepared.

677 Ditto saturated with Oil of Tar by the process called "creosoting," having been underground for 12 years.

678 Creosote Oil.

See *Official Catalogue*, CLASS IV., No. 21, and
Reports of the Juries, p. 122.—PRIZE MEDAL.

H. MINTON & CO., *Stoke-upon-Trent*, Staffordshire, England.

679 Encaustic or Inlaid Tiles, (wholesale price, 1*s.* each.)

See *Official Catalogue*, CLASS XXVII., No. 86, and
Reports of the Juries, p. 578.—COUNCIL MEDAL.

H. CHAMPERNOWNE, *Dartington House*, Totness, Devon, England.

680 Polished Madrepore Marble, (wholesale price, 3*s.* 6*d.* per foot.)

See *Official Catalogue*, CLASS I., No. 158, and
Reports of the Juries, p. 563.—HONOURABLE MENTION.

THE LONDON AND PENZANCE SERPENTINE COMPANY (J. ORGAN),
Penzance, Cornwall, England.

681 Polished Serpentine Stone from Lizard, Penzance.

See *Official Catalogue*, CLASS XXVII., No. 85, and
Reports of the Juries, p. 565.—PRIZE MEDAL.

JOHN LOMAS, *Bakewell, Derbyshire, England.*

682 Polished Derbyshire Marble.

See *Official Catalogue*, CLASS XXVII., No. 81, and
Reports of the Juries, p. 568.—PRIZE MEDAL.

JOHN W. GREAVES, *Port Madoc, Carnarvon, Wales.*

683 Slate Slab.

See *Official Catalogue*, CLASS I., No. 210, and
Reports of the Juries, p. 8.—PRIZE MEDAL.

WELSH SLATE COMPANY, *Festiniog, Merionethshire, Wales.* (London Office,
1 New Boswell-court, Lincoln's Inn.)

684 Slate Slab.

685 Roofing Slate, "Duchesses," 24 inches by 12 inches, (wholesale price, 7l. 5s. per
M. of 1200 slates.)

686 Ditto, "Countesses," 20 inches by 10 inches, (ditto, 4l. 12s. 6d. ditto.)

687 Ditto, "Ladies," 16 inches by 8 inches, (ditto, 2l. 3s. ditto.)

See *Official Catalogue*, CLASS I., No. 12 (outside the Building).

[OFFICIAL DESCRIPTIVE and ILLUSTRATED CATALOGUE of EXHIBITION and JURORS'
REPORTS, 5 Volumes.]

Tray M.—MANUFACTURES IN MINERAL SUBSTANCES FOR
BUILDING. No. 688 to No 704.

ROBERT BROWN, *Surbiton-hill, Kingston, Surrey, England.*

688 Grooved Ridge Tile, section full size, (wholesale price, 1s. per foot run, with
Vertical Ornament.)

689 Vertical Ornament for ditto, in the early English style.

690 Ditto ditto ditto ditto.

691 Red Ornamental Tile, (wholesale price, 36s. per 1000.)

692 Blue ditto. (ditto ditto.)

693 Improved Italian Tile, (wholesale price, 50s. per square, with Vertical Roll.)

694 Vertical Roll for ditto.

See *Official Catalogue*, CLASS XXVII., No. 117, and
Reports of the Juries, p. 581.—PRIZE MEDAL.

JOHN SEALY, *Bridgewater, Somersetshire, England.*

695 Bridgewater scouring or Bath brick, manufactured from the tidal deposit of the
river Parret, (wholesale price, 40s. per 1040.)

696 Corn and Malt-kiln Tile, (wholesale price, 6s. per dozen, free on board.)

See *Official Catalogue*, CLASS XXVII., No 130, and
Reports of the Juries, p. 581.—HONOURABLE MENTION

JOHN WORKMAN, *Stamford-hill, near London, England.*

697 Water-proof Brick. (Wholesale price, 1l. 15s. per 1000.)

See *Official Catalogue*, CLASS XXVII., No. 116, and
Reports of the Juries, p. 581.—PRIZE MEDAL.

JOHN RIDGWAY, & Co., *Cauldon Place, Staffordshire Potteries, England.*

698 Hollow Brick. (Wholesale price, 6l. 6s. per 1000 at the Works.)

See *Official Catalogue*, CLASS XXV., No. 5, and
Reports of the Juries, p. 541.—PRIZE MEDAL.

GRANGEMOUTH COAL COMPANY, *Grangemouth, Scotland.*

699 Fire Brick. (Wholesale price, pressed, 45s. per 1000; unpressed, 44s. per 1000.)

See *Official Catalogue*, CLASS XXVII., No. 99, and
Reports of the Juries, p. 585.—HONOURABLE MENTION.

THOMAS PEAKE, *Tileries, Tunstall, Staffordshire, England.*

(For Prices, see detailed List accompanying Specimens.)

700 Terro-Metallic Roof Tile—No. 1.

701 Ditto ditto —No. 2

See *Official Catalogue*, CLASS XXVII., No. 123, and
Reports of the Juries, p. 581.—PRIZE MEDAL.

SOCIETY FOR IMPROVING THE CONDITION OF THE LABOURING
CLASSES, 21, *Exeter Hall, London, England.*

702 Hollow Brick.

See *Official Catalogue*, CLASS XXVII., No. 124, and
Reports of the Juries, p. 579.—COUNCIL MEDAL.

JAMES LUFF, *Tuddenham, Ipswich, Suffolk, England.*

703 Red Ornamental Brick. (Wholesale price, 50s. per 100.)

704 White ditto. (Ditto, 55s. ditto.)

See *Official Catalogue*, CLASS XXVII., No. 111, and
Reports of the Juries, p. 580.—HONOURABLE MENTION.

THE MARQUIS OF BREADALBANE, *Taymouth, Aberfeldy, Perth, Scotland.*

705 Granite.

706 Porphyry.

707 Lead Ore.

708 Silver Lead Ore.

See *Official Catalogue*, CLASS I., No. 7, and
Reports of the Juries, p. 13.

**ETH Zürich
Bibliothek**

0060/1 27527

Abt. T	U	Band	Teil	Aufl.	E	S
8	9531 *					

BUCHKARTE
Bitte nicht herausnehmen!

9/84 